

HOW TO CLEAN WITH OMNICLEAN

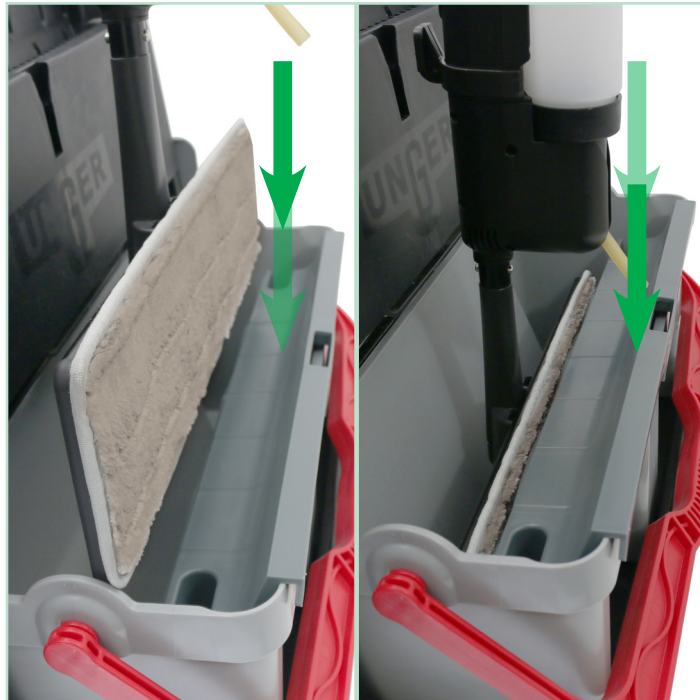


OmniClean RESTROOM KIT



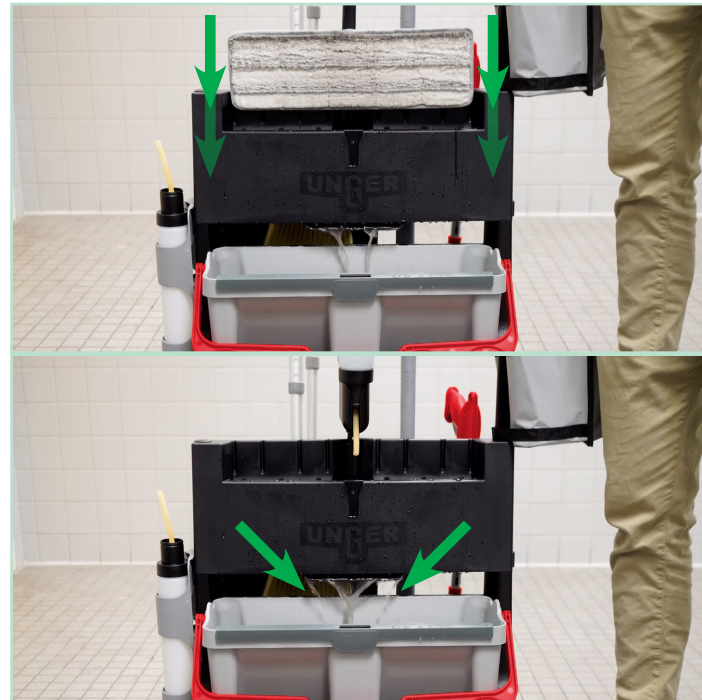
Quality Tools for Smart Cleaning™

Step 5



When mop pad is dirty, insert into scrub board bucket and scrub debris off pad.

Step 6



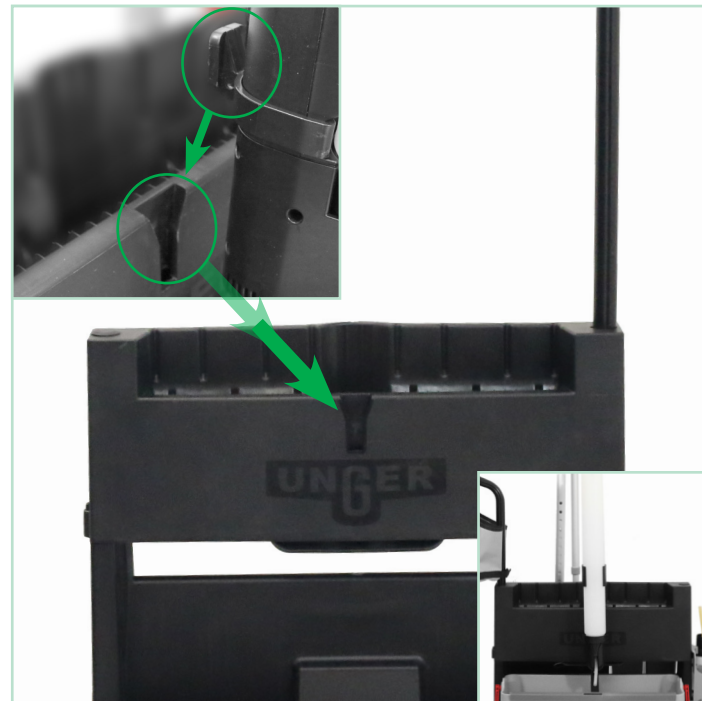
Insert mop into wringer, wring mop 2x making sure to completely pull mop out of wringer each time.

Step 7



Use restroom accessories as needed.

Step 8



When mopping is complete, empty rinse bucket into utility sink and hang Excella into storage clip.



View our OmniClean Video Here



Unger OmniClean Restroom Kit

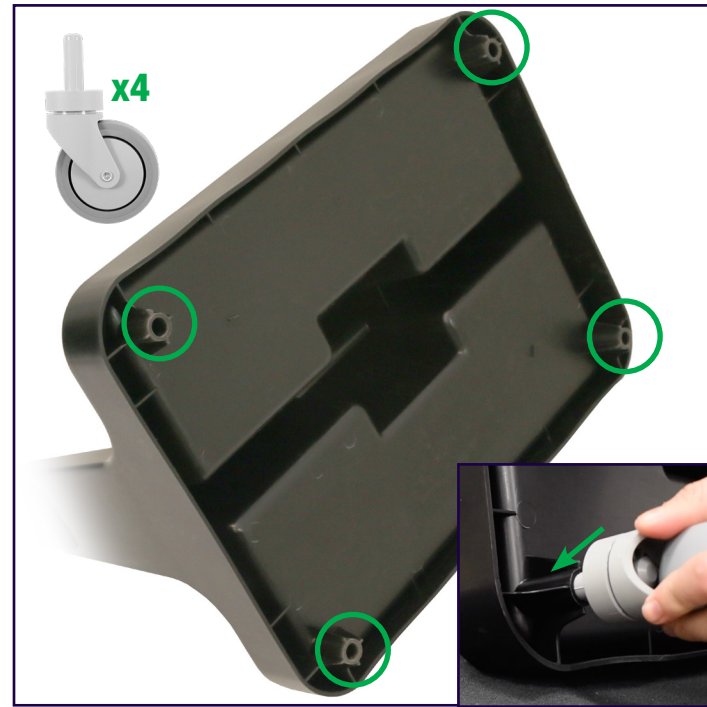
PART NO.: CLRRK CASE QTY: 1

- Offset Pole with Actuator
- Small Bottle 0.5L
- Large Bottle 1L
- Pad Holder
- Microfiber Pads (2)
- DustPan Telescopic red
- Toilet Brush Handle w/2 brush heads
- NiftyNabber Red 18"
- SmartColor Rectangular Labels (2)
- Carriage with Wringer
- Gray Bucket
- Gray Scrub Board
- Offset Tube Carriage Handle
- Red Bucket Handle
- Dual Bottle Holder Clip
- DustPan Holder Clip
- Toilet Brush Holder Clip
- Nifty Nabber Holder Clip
- Storage Caddy
- Excella Clip
- Casters (4)

ASSEMBLY

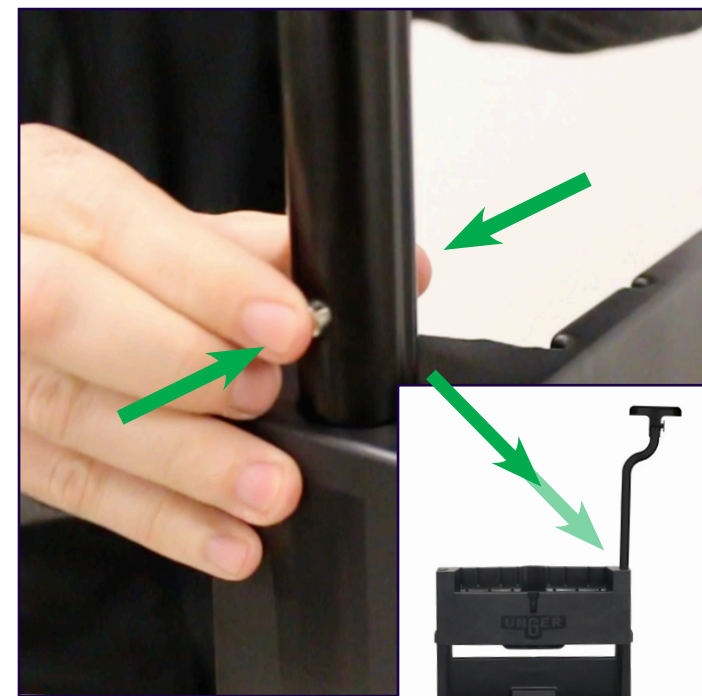


Caster Installation



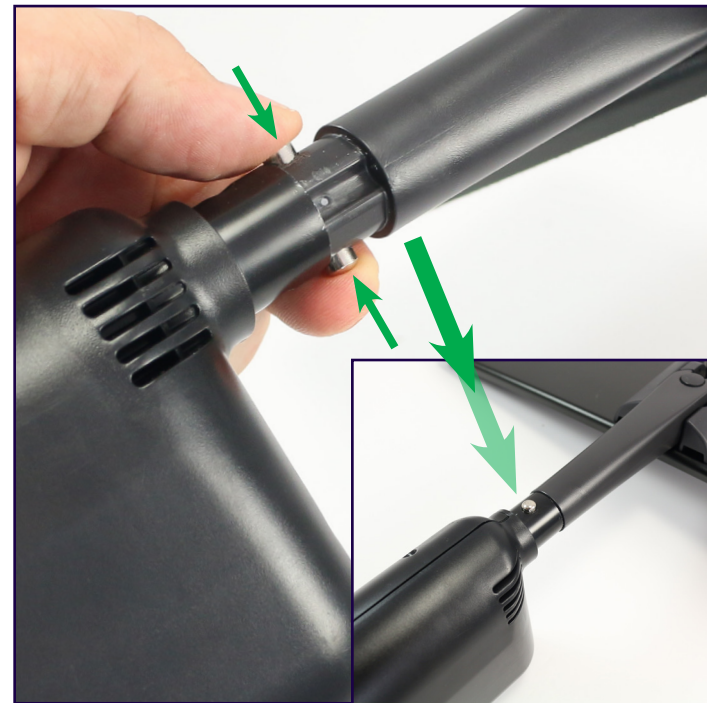
Push casters firmly into the base of the carriage.

Handle Installation



On the handle, press metal pins and guide into the carriage base until you hear a click.

Mop Head Installation



Press metal pins on mop pad holder into the base of the Excella pole until you hear a click.

Accessory Installation



Attach accessory clips and store tools; place dustpan as pictured.

HOW TO CLEAN WITH OMNICLEAN



Step 1



Fill scrub board bucket with water to the fill line and place bucket on carriage.
(Scrub board bucket is always on Unger logo side)

Step 2



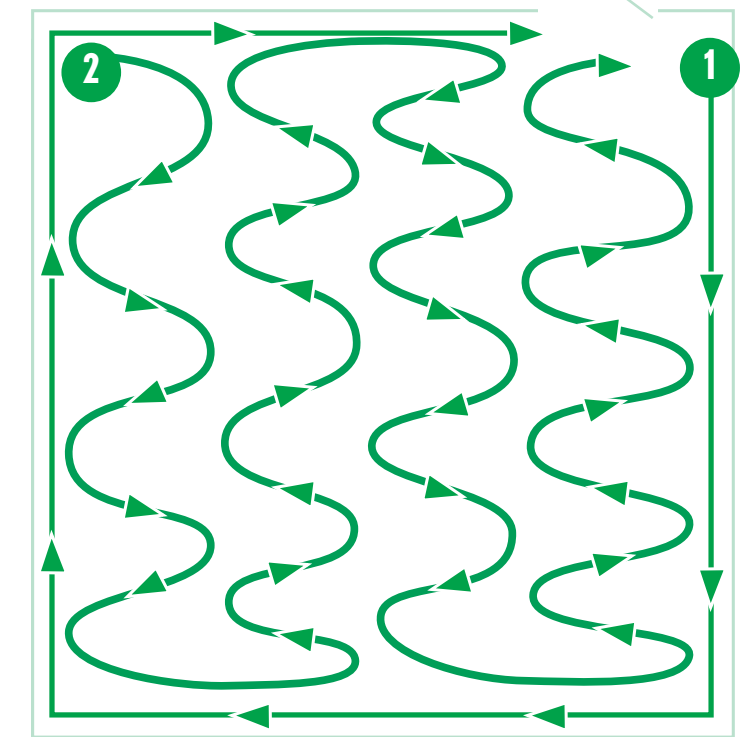
Adjust the height of Excella pole to chin height; tighten the locking collar.

Step 3



Dispense cleaning agent.

Step 4



Mop with "S" motion.