



PARTS MANUAL

G & SL-Series

ELECTRIC CONVECTION OVENS

SL-Series Models

SLEB/10CCH	SLES/10CCH
SLEB/10SC	SLES/10SC
SLEB/20CCH	SLES/20CCH
SLEB/20SC	SLES/20SC

G-Series Models

EB/10CCH	ES/10CCH
EB/10SC	ES/10SC
EB/20CCH	ES/20CCH
EB/20SC	ES/20SC



Model ES/10SC



Model ES/20SC

1100 Old Honeycutt Road, Fuquay-Varina, NC 27526
www.southbendnc.com

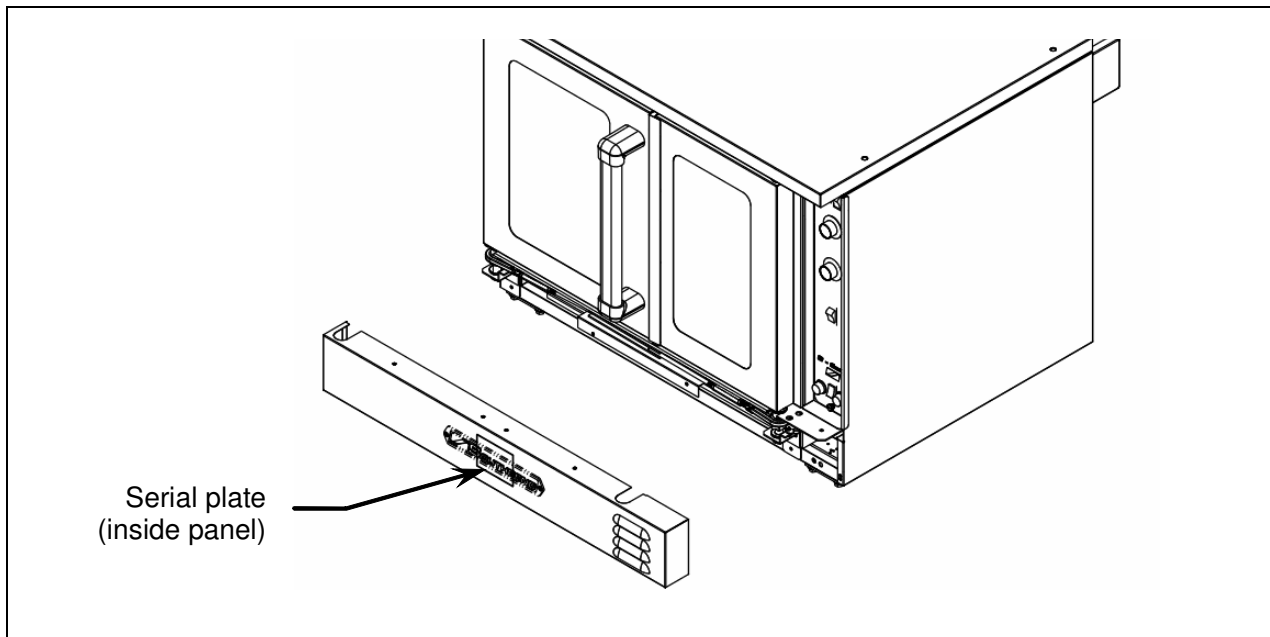
Copyright © 2013 by Southbend. All rights reserved. Published in the United States of America.



Replacement parts may be ordered either through a Southbend Authorized Parts Distributor or a Southbend Authorized Service Agency. It is recommended to verify part numbers with a Southbend Authorized Parts Supplier or the Southbend Parts/Service Dept. prior to ordering parts.

When ordering parts, you will need to supply the Model Number, Serial Number, Part Number, Description, Finish, and Electrical Characteristics as applicable to the unit.

The serial plate is located on the interior side of the lower front panel, as shown below.



SPECIFICATIONS

ELECTRICITY SUPPLY

The following table lists the electricity supply requirements PER OVEN (double for dual-oven models).

Supply Voltage	Oven Component	Total kW	3-Phase Loading (kW/phase)			Nominal Amperes per Line-Wire				Minimum Supply Wire (AWG) Size	
			L1-L2	L2-L3	L1-L3	3-Phase			1-Phase Total	3-Phase	1-Phase
480	Heating Elements	11.00	3.67	3.67	3.67	13.2	13.2	13.2	22.9	12	10
	Motor & Controls	0.90	0.00	0.00	0.00	2.2	0.0	2.2	2.2		
415	Heating Elements	11.00	3.67	3.67	3.67	15.3	15.3	15.3	45.9	12	6
	Motor & Controls	0.90	0.00	L3-N	0.90	0.0	0.0	3.8	3.8		
380	Heating Elements	11.00	3.67	3.67	3.67	16.7	16.7	16.7	28.9	12	8
	Motor & Controls	0.90	0.00	L3-N	0.90	0.0	0.0	4.1	4.1		
240	Heating Elements	11.00	3.67	3.67	3.67	26.4	26.4	26.4	45.8	8	6
	Motor & Controls	0.90	0.00	0.00	0.90	3.8	0.0	3.8	3.8		
220 (50Hz)	Heating Elements	9.25	3.10	3.10	3.10	24.2	24.2	24.2	42.0	8	6
	Motor & Controls	0.90	0.00	0.00	0.90	4.1	0.0	4.1	4.1		
208	Heating Elements	11.00	3.67	3.67	3.67	30.5	30.5	30.5	52.9	8	4
	Motor & Controls	0.90	0.00	0.00	0.90	4.3	0.0	4.3	4.3		

An electrical diagram is located on the side of the control panel assembly (see drawing on page 5). Electrical diagrams can also be found in the Operator's manual.

The appliance, when serviced, must be electrically grounded in accordance with local codes, or in the absence of local codes, with the *National Electrical Code, ANSI/NFPA 70*, or the *Canadian Electrical Code, CSA C22.2*, as applicable.

Use 167°F (75°C) wire for all supply lines.

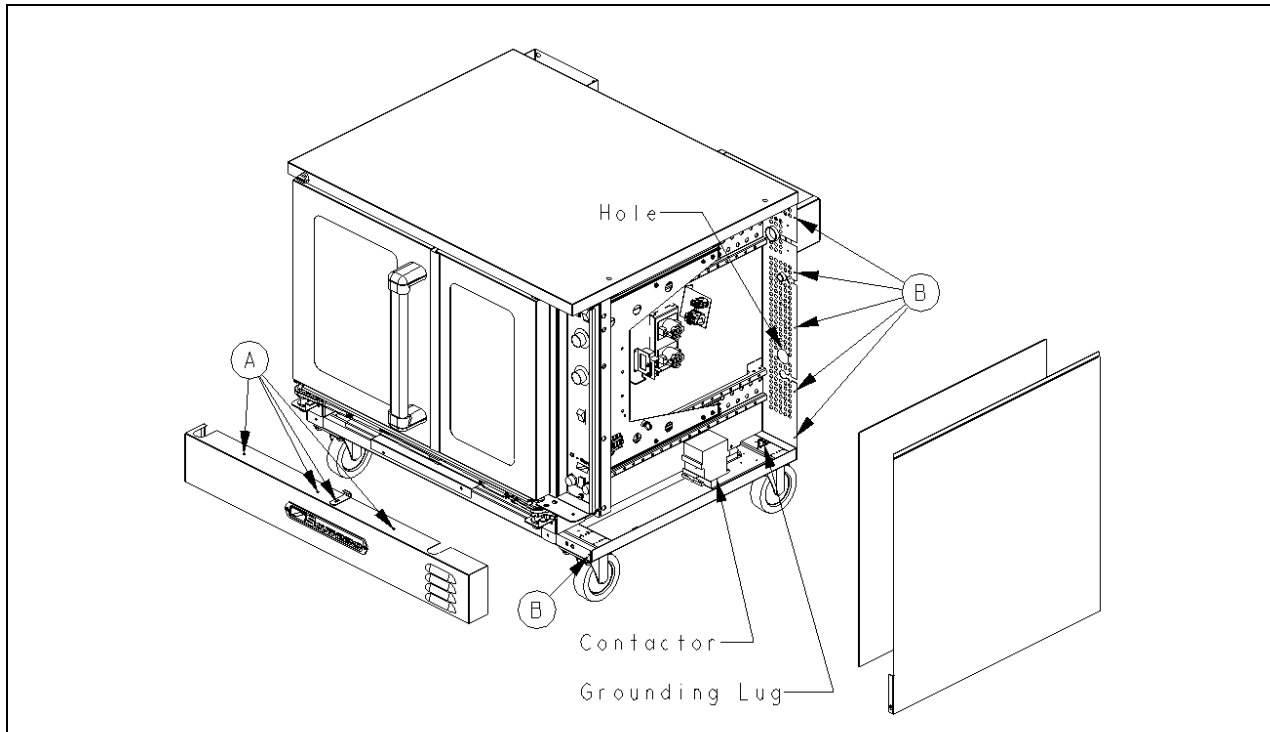
Ovens are shipped wired for either single-phase or three-phase operation, depending on which was specified on the factory order. If necessary an oven can be field-converted. Reference Operator's Manual for wiring connection information.

The electrical connections are made directly to the terminals of the heating-element contactor, which is located inside the control-panel compartment on the right side of the oven. A circular opening sized for a strain-relief fitting is located on the back of the oven near the right side (on right as seen from the front of the oven, see illustration on page 4). Models with two stacked ovens have a separate electrical connection for each oven.



Connecting Electrical Supply

The following drawing shows the locations of items for the 208-240V electrical supply. Reference Owners manual for other voltage options.



INFORMATION

ELECTRICAL CONNECTION ACCESS

1. **CHECK THAT THE POWER SUPPLY CIRCUIT BREAKER IS OPEN.**
2. Locate and remove the four screws that secure the lower front panel (items "A" in the drawing above). Lift up the panel and pull it forward to remove it, then set it aside.
3. Locate and remove the front screw (item "B" in the drawing above), that secures the lower front corner of the side panel.
4. Locate and remove the five rear screws that secure the back edge of the side panel to the oven (items "B" in the drawing above). Remove the side panel and insulation and set them aside.
5. Route the supply wires and the grounding wire through the hole on the back of the oven. Use a strain-relief fitting.
6. Attach each supply wire to the appropriate terminal of the contactor (according to wiring diagram).
7. Insert the ground wire into the grounding lug and tighten the screw.
8. Check that all connections match the wiring diagram and are tight.
9. Reattach the right-side panel and insulation; and front panel using screws removed in steps 1 thru 4.

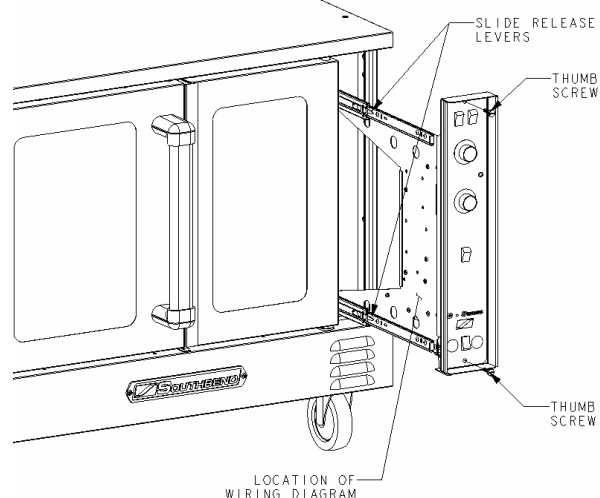


CONTROL PANEL ACCESS AND SHUT-OFF SWITCH

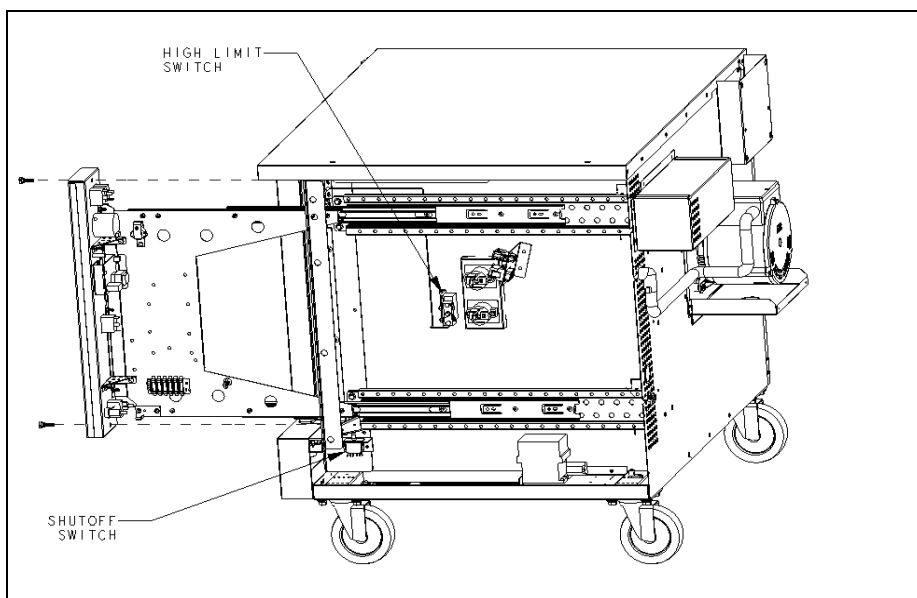
To access the control panel components, remove the two thumbs screws at the top and bottom of the control panel and slide the control panel out (see 1ST picture). A wiring diagram for the oven is located on the side of the control panel assembly **When the control panel is slid out, all power to the control panel is cut off by a shut down switch that is located directly inside the opening and below the control panel** (see 2ND picture). To re-energize the controls for troubleshooting, pull the white plunger on the shut down switch up.

To fully remove Control Panel, disconnect temp probe wires and harness connectors prior to pulling up on slide release levers and removing.

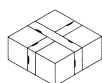
Accessing Control Panel Components



Accessing Control Panel Components



INFORMATION



PARTS

NOTICE

INSTALLATION OF OTHER THAN GENUINE SOUTHBEND PARTS WILL VOID THE WARRANTY ON THIS EQUIPMENT.

The serial plate with voltage, model, and serial information is located inside the lower front panel of the oven.

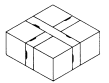
Replacement parts may be ordered either through a Southbend Authorized Parts Distributor or a Southbend Authorized Service Agency. It is recommended to verify part numbers with a Southbend Authorized Parts Supplier or the Southbend Parts/Service Dept. prior to ordering parts.

When ordering parts, you will need to supply the Model Number, Serial Number, Part Number, Description, Finish, and Electrical Characteristics as applicable to the unit.

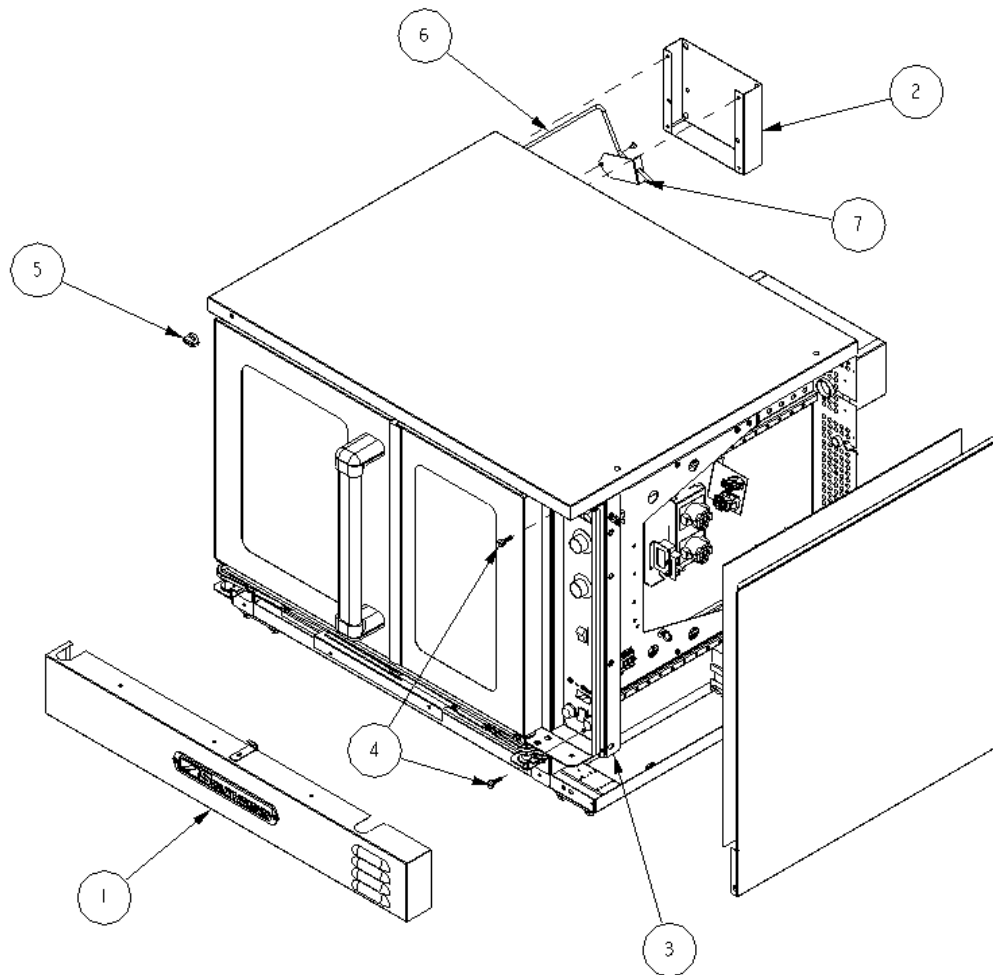
For parts not listed, contact a Southbend Authorized Parts Distributor or Southbend Authorized Service Agency. You can find an Authorized Parts Distributor or Service Agency in your area by going to www.southbendnc.com/service.html. If this information is not available, contact the Parts/Service Dept. at Southbend to obtain specific part availability and information.

Index of Parts Diagrams

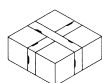
Page Number	Description
7	Front Panel and Vent Cover Parts
8	Door Parts
9	Door Chain Mechanism Parts
10	Control Panel Parts for Models with Standard Controls (SC Models)
12	Control Panel Parts for Cycle/Cook and Hold Models (CCH Models)
14	Oven Interior and Fan Motor Parts
15	Oven Light Parts
16	Side Compartment Parts
17	Leg Parts for Single-Deck SilverStar Models
17	Leg Parts for Single-Deck Marathoner Gold Models
18	Storage Rack Parts
19	Double-Deck Oven Stacking Parts
20	Leg Parts for Double-Deck Ovens



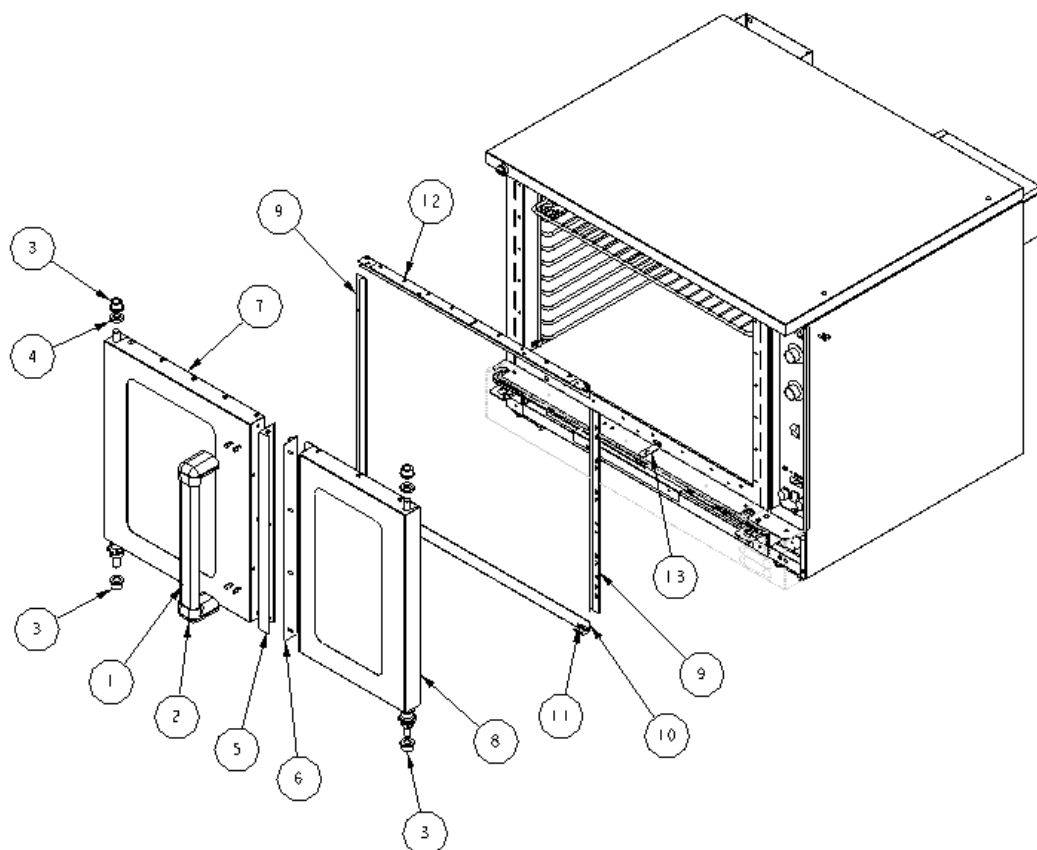
Front Panel and Vent Cover Parts



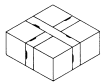
Key	Part Number	Qty	Description
1	1177867	1	Panel, front louver, co
2	1175281	1	Cover, Vent
3	1197799	1	Control Panel Sealing Plate Assembly
4	1179703	2	Thumbscrew for control panel
5	1175401	1	Knob, Moisture vent
6	1181974	1	Cont rod, vent
7	1175277	1	Plate, vent



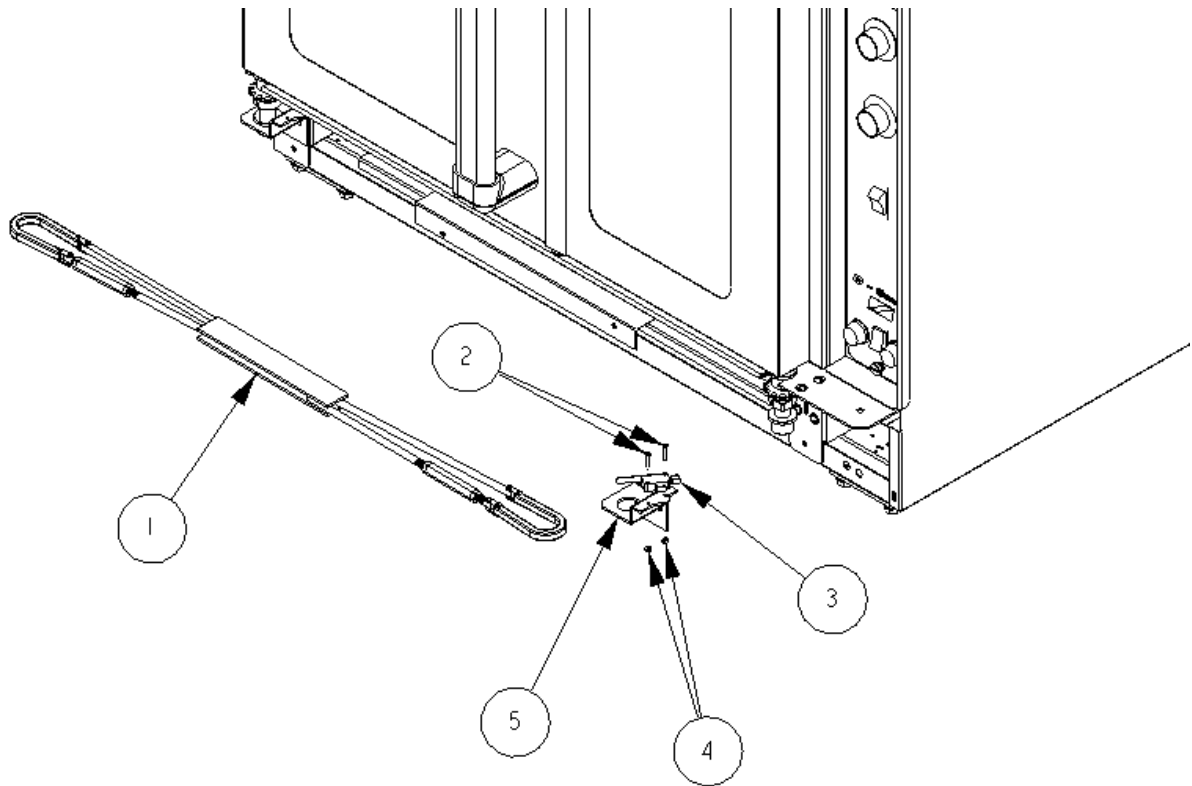
Door Parts



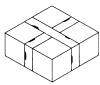
Key	Part Number	Qty	Description
1	1197269	1	Handle (part of left door assembly)
2	1197282	2	End Cap (part of left door assembly)
3	1164527	4	Bushing, bronze
4	1164547	2	Spacer, Door shaft
5	1197537	1	Center door seal, left door (60%)
6	1197538	1	Center door seal, right door (40%)
7	1198056	1	Door assembly, left, 60%, window, CO
8	1197732	1	Door assembly, left, 60%, solid, CO
	1198057	1	Door assembly, right, 40%, window, CO
	1197736	1	Door assembly, right, 40%, solid, CO
9	1181865	2	Door seal, left & right, CO
10	1191444	1	Door seal, bottom, metal, CO
11	1197506	1	Door seal assembly, bottom, CO
12	1197502	1	Door seal assembly, top, CO
13	1197723	1	Door Stop, bottom



Door Chain Mechanism Parts



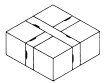
Key	Part Number	Qty	Description
1	1179937	1	Door Chain assembly
2	1172326	2	Screw, #4-40 x 3/4, zinc plated
3	1177567	1	Switch, door, spdt, 15 amp
4	1172327	2	Nut #4-40, zinc plated, hex
5	1181956	1	Bracket, door switch

**Control Panel Parts for Models with Standard Controls (SC Models)**

See drawing on following page.

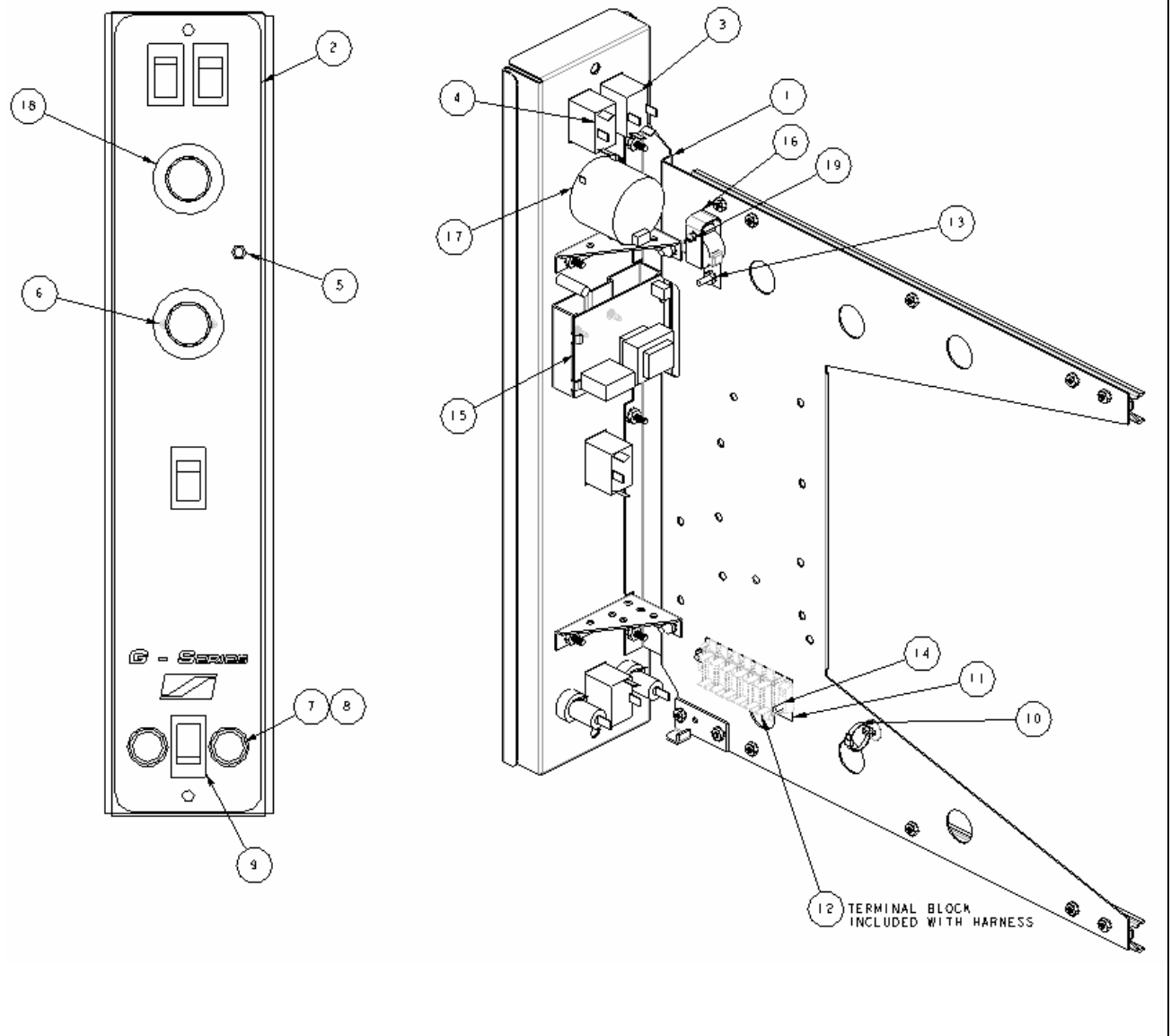
Key	Part Number	Qty	Description
-	1198034	1	Control panel s/a, SC, 60Hz, G-Series, 208/380/415V (assembled, w/o wiring harness)
-	1198035	1	Control panel s/a, SC, 60Hz, G-Series, 480V (assembled, w/o wiring harness)
-	1198036	1	Control panel s/a, SC, 60Hz, S-Series, 208/380/415V, w/lights (assembled, w/o wiring harness)
-	1198038	1	Control panel s/a, SC, 60Hz, S-Series, 208/380/415V, w/o lights (assembled, w/o wiring harness)
	1198040	1	Control panel s/a, SC, 50Hz, S-Series, 208/380/415V, w/lights (assembled, w/o wiring harness)
-	1198041	1	Control panel s/a, SC, 50Hz, S-Series, 208/380/415V, w/o lights (assembled, w/o wiring harness)
-	1198037	1	Control panel s/a, SC, 60Hz, S-Series, 480V, w/lights (assembled, w/o wiring harness)
-	1198039	1	Control panel s/a, SC, 60Hz, S-Series, 480V, w/o lights (assembled, w/o wiring harness)
*	1179593	1	Wiring harness, SC
1	1197782	1	Frame Assembly, Std., Slide
2	1198001	1	Polypanel, G-Series
	1198000	1	Polypanel, SL-Series
3	1177541	1	Rocker switch-DPST- (on-off)
4	1177540	2	Rocker switch-SPDT (on-on)
5	1170350	1	Light, amber, 240V, signal
6	6600334	2	Screw, 6-32, 3/8, Self-tapping
7	1170424	2	Fuse holder
8	1170425	2	Fuse, 12 amp #LP-CC-12 low peak
9	1177789	1	Rocker switch-SPST momentary (for models with the optional oven light)
	1177642	1	Plug, square (for models without the optional oven light)
10	1198084	1	Push mount wire tie
11	1170336	1	Marker strip
12	1170335	1	Terminal block (supplied w/harness)
13	2001347	3	Locknut, 8-32
14	1146397	3	Screw 8-32 x 5/8 s/steel pan head
15	1181998	1	Temperature control board/analog potentiometer
16	1175708	1	Buzzer, adjustable, 240VAC
17	1176416	1	Timer, motorized, 240V, 60Hz
	1176436	1	Timer, motorized, 240V, 50Hz
*	1181996	1	Temperature probe
18	1170337	2	Knob for temperature control bd. and timer
19	1146319	1	Screw 6-32 x 1/2 round head
*	1062100	1	Wire nut (for models without the optional oven light)
*	1166609	10	Ties, cable, ty-rap, 4"

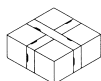
* not shown on drawing.



Control Panel Parts for Models with Standard Controls (SC Models)

See parts list on previous page.

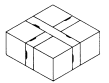


**Control Panel Parts for Cycle/Cook and Hold Models (CCH Models)**

See drawing on following page.

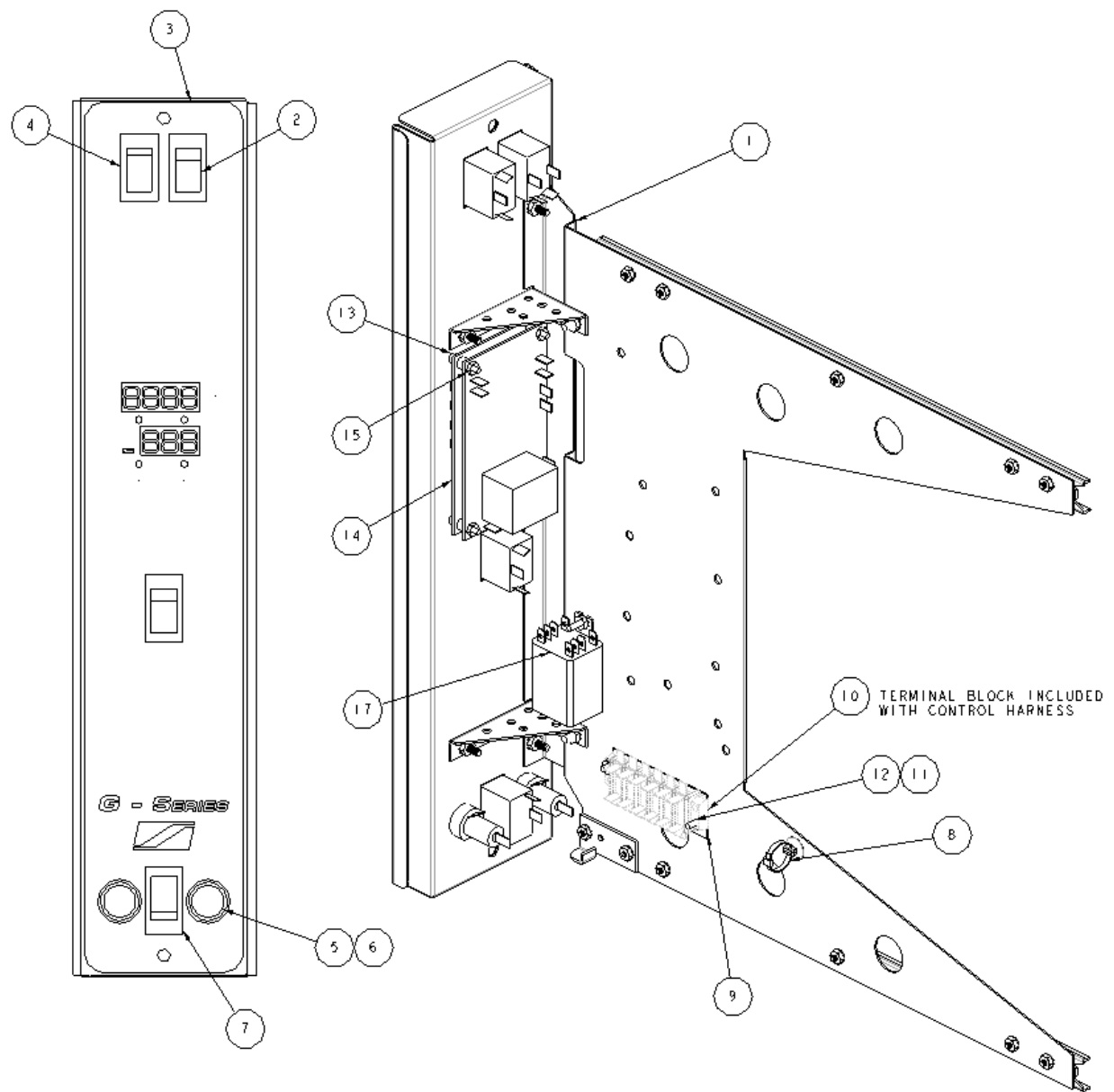
Key	Part Number	Qty	Description
-	1198010	1	Control panel s/a, CCH, 60Hz, G-Series, 220/380/415V (assembled, w/o wiring harness)
-	1198011	1	Control panel s/a, CCH, 60Hz, G-Series, 480V (assembled, w/o wiring harness)
-	1198012	1	Control panel s/a, CCH, 60Hz, S-Series, 220/380/415V, w/lights (assembled, w/o wiring harness)
-	1198014	1	Control panel s/a, CCH, 60Hz, S-Series, 220/380/415V, w/o lights (assembled, w/o wiring harness)
-	1198013	1	Control panel s/a, CCH, 60Hz, S-Series, 480V, w/lights (assembled, w/o wiring harness)
-	1198015	1	Control panel s/a, CCH, 60Hz, S-Series, 480V, w/o lights (assembled, w/o wiring harness)
*	1180484	1	Wiring harness, CCH
1	1197783	1	Frame Assembly, CCH, Slide
2	1177540	2	Rocker switch-SPDT (on-on)
3	1198003	1	Polypanel, CCH, G-Series
	1198002	1	Polypanel, CCH, S-Series
4	1177541	1	Rocker switch-DPST- (on-off)
5	1170424	2	Fuse holder
6	1170425	2	Fuse, 12 amp #LP-CC-12 low peak
7	1177789	1	Rocker switch-SPST momentary (for models with the optional oven light)
	1177642	1	Plug, square (for models without the optional oven light)
8	1198084	1	Wire Tie, push mount
9	1170336	1	Marker strip
10	1170335	1	Terminal block
11	2001347	4	Locknut, 8-32
12	1146397	4	Screw 8-32 x 5/8 s/steel pan head
13	1180404	4	Spacer, control
14	1180407	1	Control, CCH
15	1146400	4	Nut, #6-32 hex
16	1180499	1	Relay, 208/240V
	1181996	1	Temperature probe
*	1166609	10	Ties, cable, ty-rap, 4"

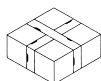
* not shown on drawing.



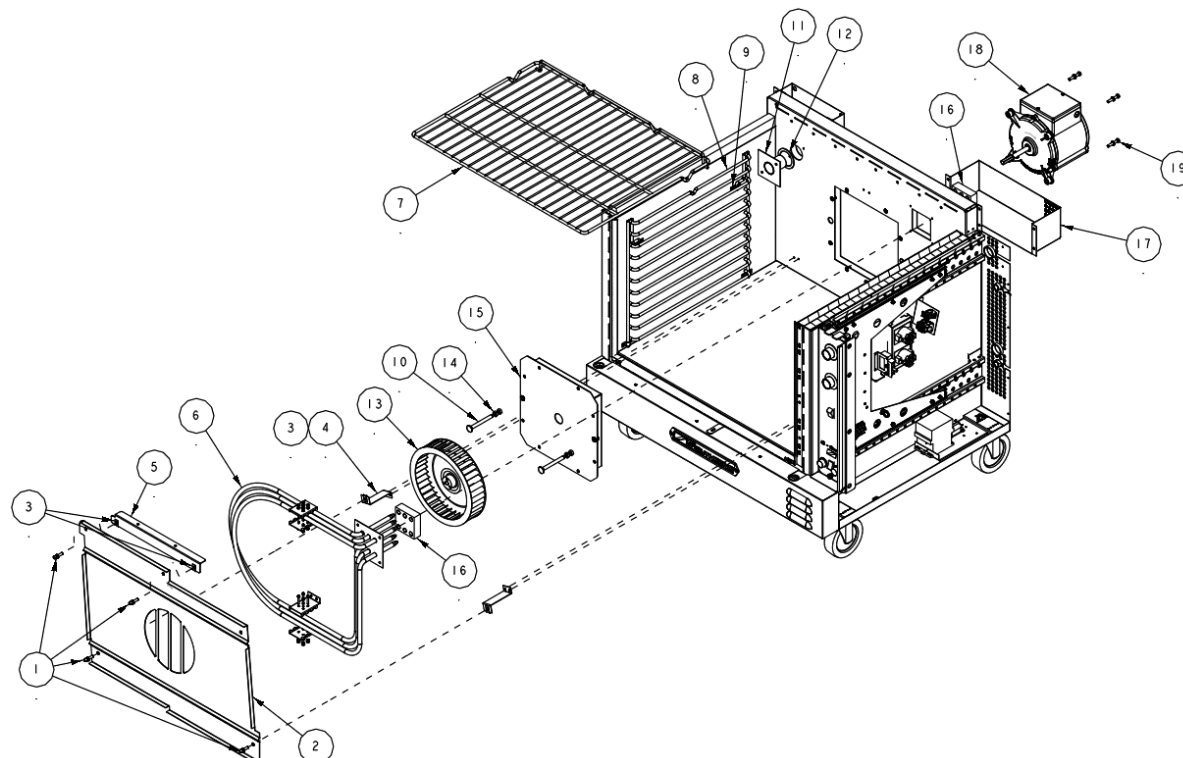
Control Panel Parts for Cycle/Cook and Hold Models (CCH Models)

See parts list on previous page.





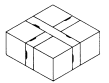
Oven Interior and Fan Motor Parts



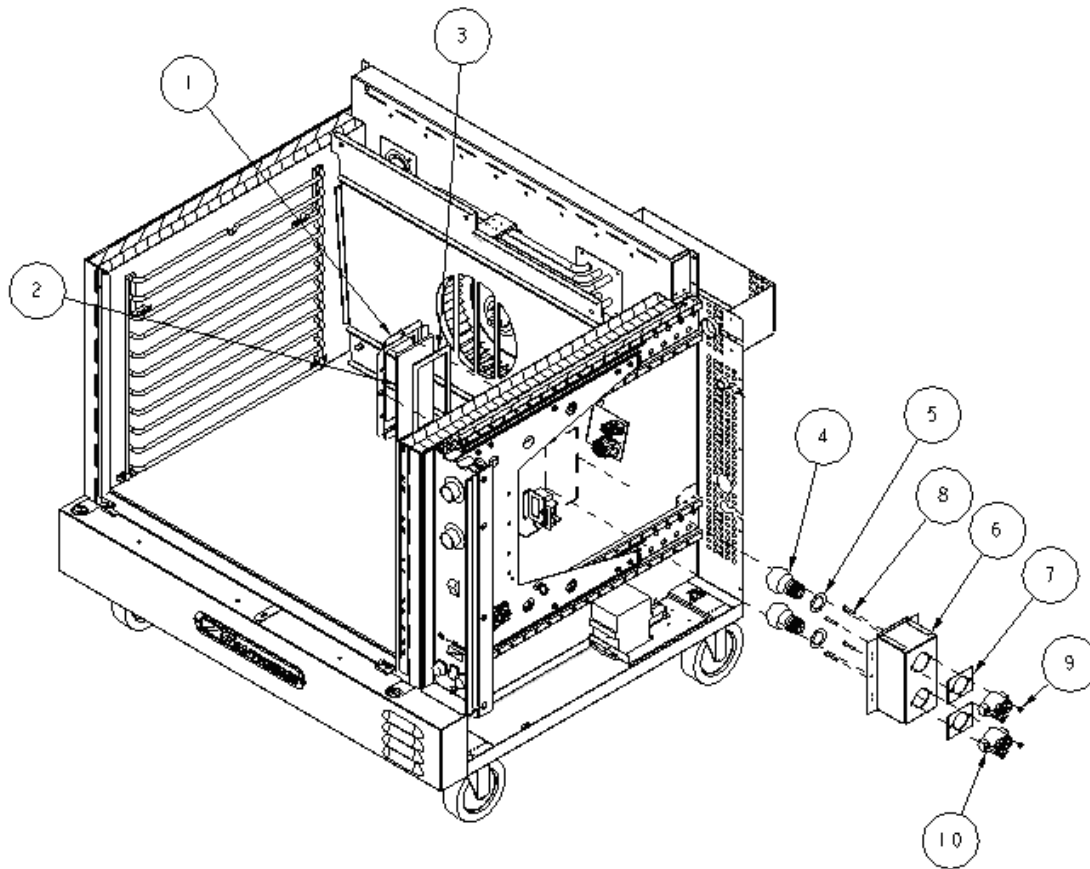
Key	Part Number	Qty	Description
1	1160289	4	Thumb screw 1/4-20 x 3/4
2	1181977	1	Baffle, oven, cr, Elec., C/O
3	1166819	4	Nut, 1/4 x 20, speed
4	1175412	2	Bracket, baffle mtg
5	1175715	1	Bracket, baffle locating
6	1175263	1	Element asm. 208V
	1175264	1	Element asm. 240V
	1175414	1	Element asm. 380V
	1175265	1	Element asm. 480V
7	1189821	5	Rack, oven, shallow, mg
	1189860	5	Rack, oven, bakery. mg
8	1189820	2	Rack guide, 11 pos, shallow
	1189822	2	Rack guide, 11 pos, bakery
9	6660	8	Clip, side rack support
10	1175146	1	Bolt, carriage, 3/8, ss
11	1175407	1	Tube, w/a, moisture vent
12	1080303	1	Gasket, silicone, .062 ga.
13	1179104	1	Blower wheel, G & E series
*	1179100	**	Puller disk
14	1175146	4	Nut, 3/8, ss
15	1175705	1	Pocket w/a, blower motor
16	1195439	2	Insulation, elements
17	1175256	1	Cover, rear, elements
18	1175568	1	Motor, 2sp, 230V, 50/60 cycle
19	1146264	4	Screw, 1/4-20 x 2

* not shown on drawing.

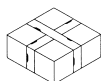
** SERVICE TOOL; may be needed to remove blower wheel.



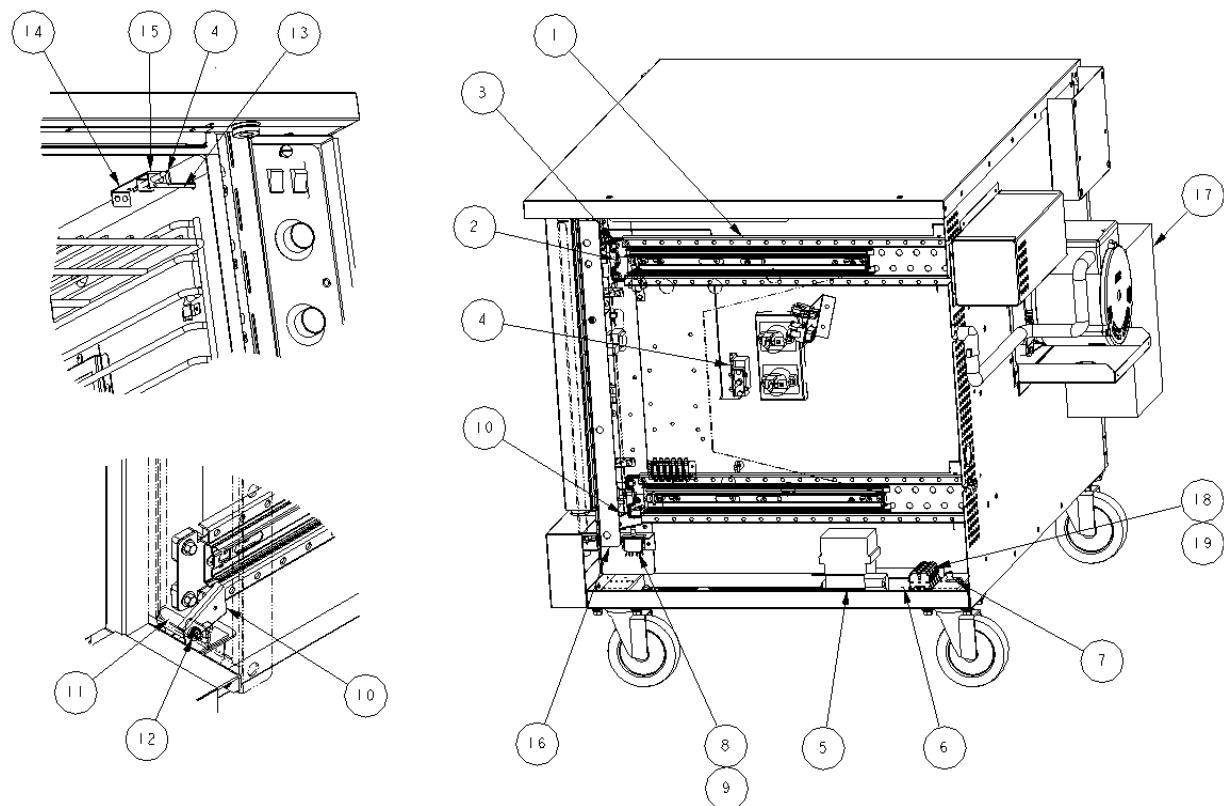
Oven Light Parts



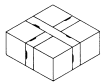
Key	Part Number	Qty	Description
1	1181806	1	Retainer, glass, co
2	1181807	1	Glass, bulb cover, co
3	1197730	1	Seal, Teflon
4-10	1181828	1	Oven light subassembly, co (parts 3 through 7, assembled)
4	1160009	2	Bulb, oven light, 40 watt, clear
5	P6497	2	Gasket, Teflon, white
6	1181805	1	Light box, co
7	1160032	2	Gasket, light socket, .062 ga
8	1146322	4	Screw, 8-32X1 round head
9	2001347	4	Nut, Locking, KEPS
10	1160010	2	Socket, oven light asm
* not shown on drawing.			



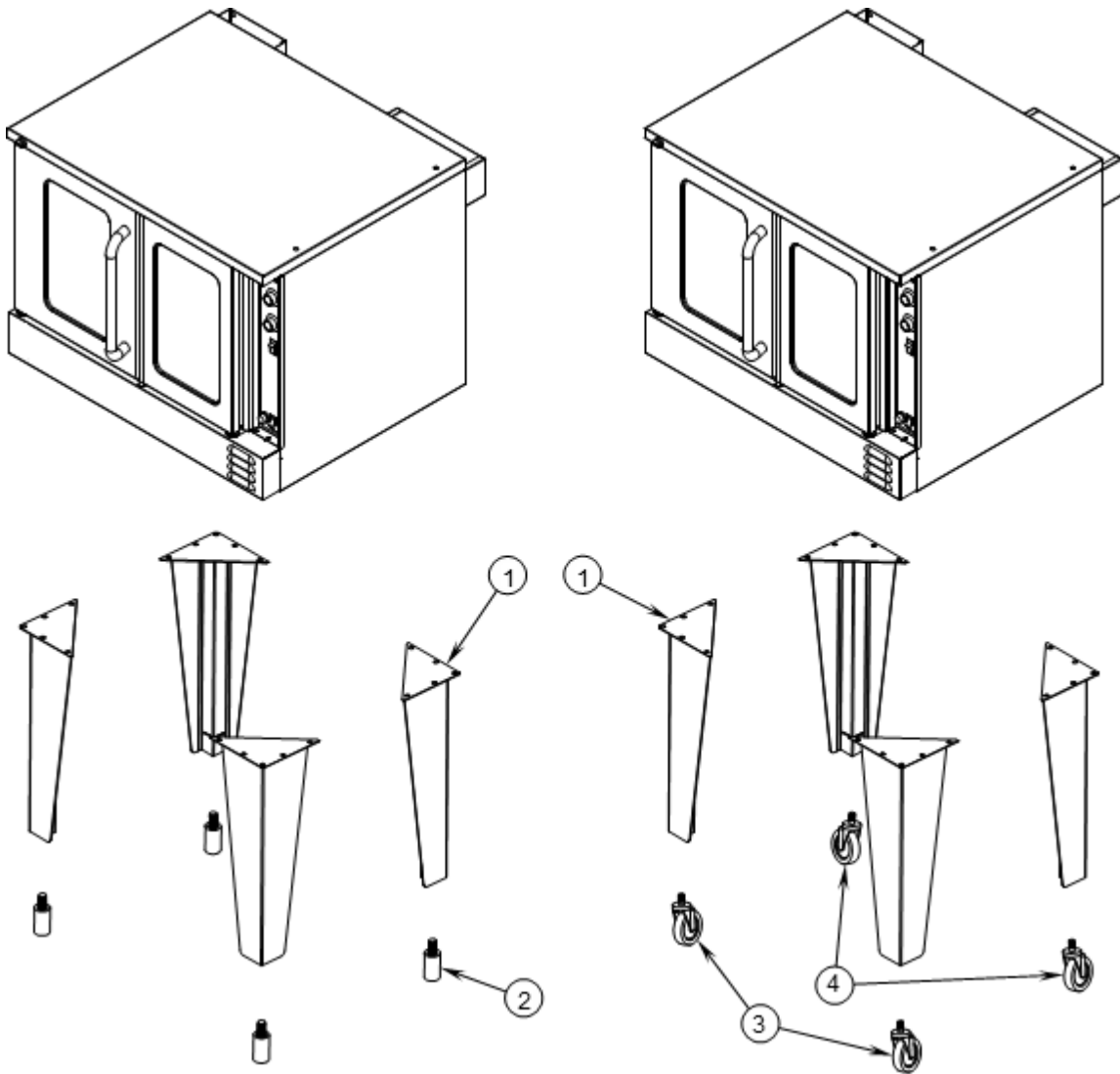
Side Compartment Parts



Key	Part Number	Qty	Description
1	1197805	2	Slide mounting asm. (std depth)
	1197806	2	Slide mounting asm. (bakery depth)
2	1197777	2	Shim,Slide support
3	1188525	4	Bolt, Hex, flng hd 1/4-20 x 1.00 lg, ss
4	1161998	1	Switch, High limit
5	1179680	1	Contactor, element power
6	1175724	2	Mntg brkt, contactor
7	1175547	1	Lug, grounding
8	1177566	1	Switch, shutdown, SPDT, 15 amp
9	1197586	1	Brkt, switch mount
10	1197756	1	Pivot, S/O Switch
11	1198006	1	Spacer, pivot
12	1198004	1	Bolt, shoulder, 5/16 x 1-1/2 lg. (1/4-20 thread)
13	1181996	1	Probe, Thermostat
14	1170328	1	Brkt, probe
15	1171710	1	Clamp brkt, probe
16	1197799	1	Sealing plate asm.
17	1170373	1	Transformer, (480V units ONLY)
18	PE-024	1	Term block end (380V & 415V units ONLY)
19	PE-023	3	Term block (380V & 415V units ONLY)



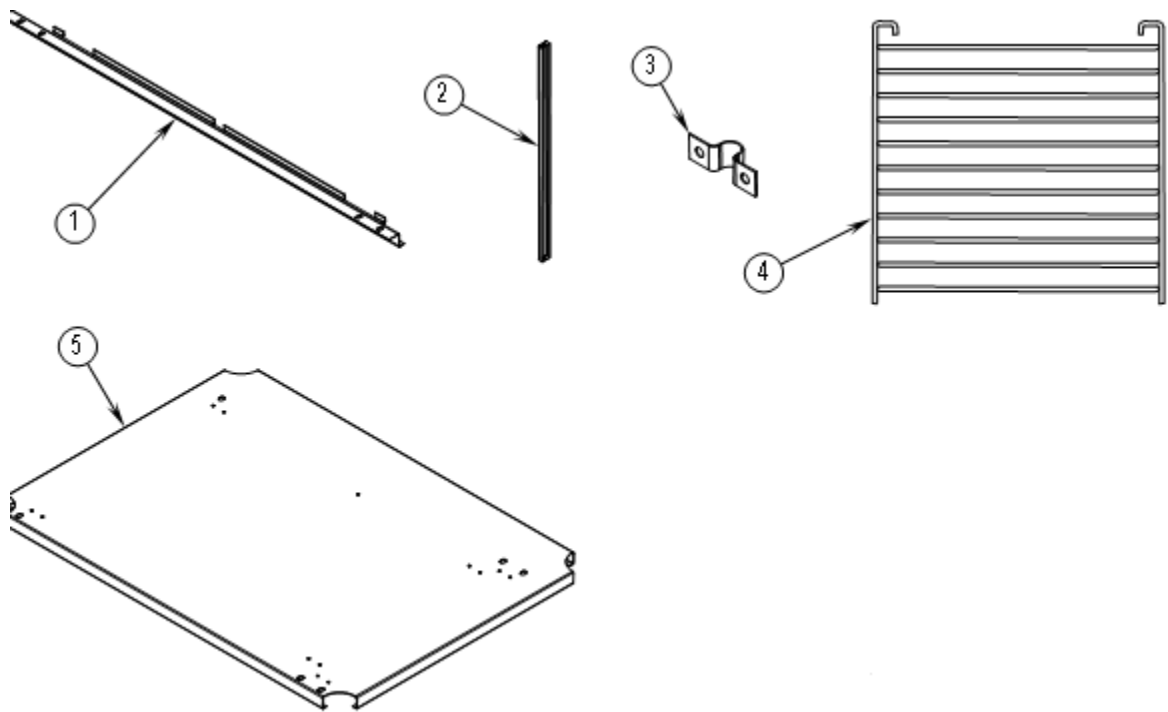
Leg Parts for Single-Deck Models



Key	Part Number	Qty	Description
1	1177850	4	Single deck leg (for legs with feet or casters)
2	1174266	4	Adjustable foot for leg
*	1173584	4	Flanged foot (optional replacement for adjustable foot 1174266)
3	1174264	2	Caster with brake
4	1174263	2	Caster without brake
*	1174265	1	Set of four casters (two with brake, two without brake)
*	1146213	20	3/8 x 16 x 1 hex head bolt
*	1146513	20	3/8 lock washer
*	1146522	20	3/8 flat washer
* not shown on drawing.			



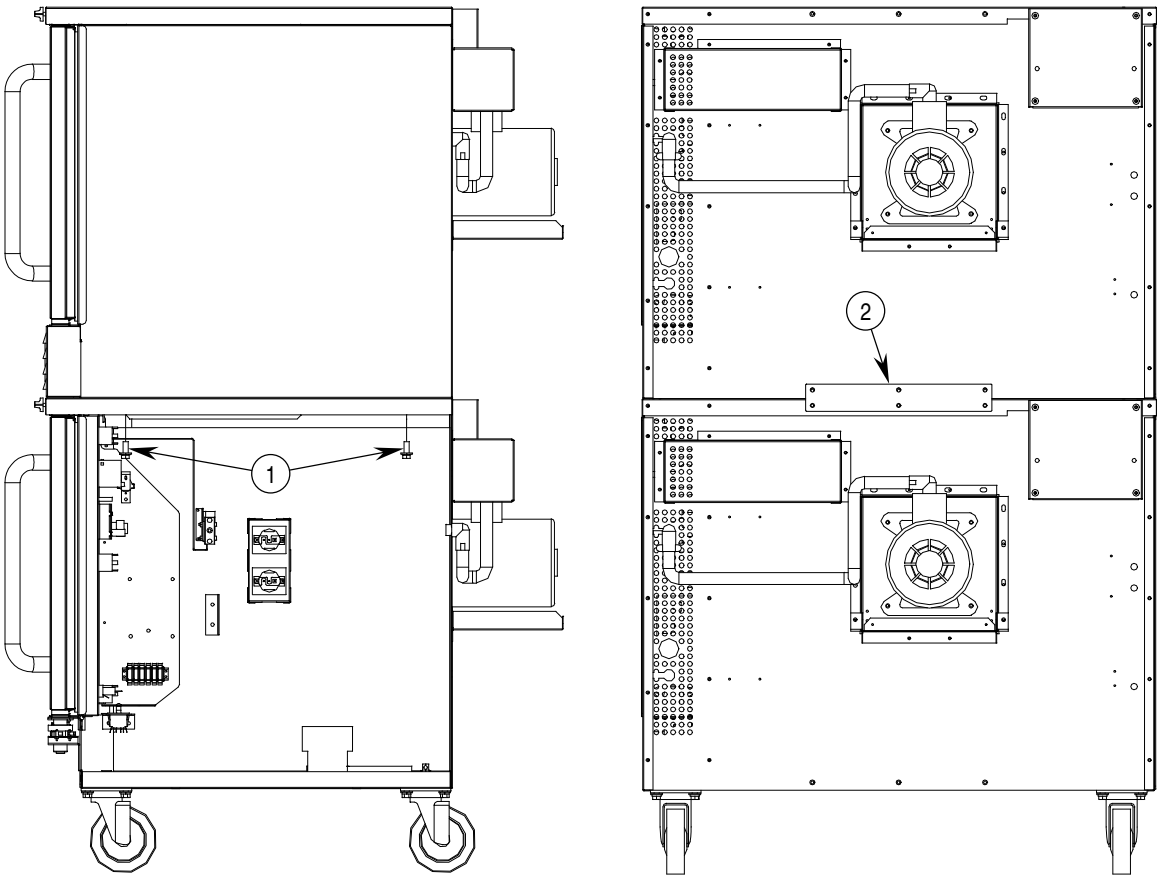
Storage Rack Parts



Key	Part Number	Qty	Description
-	1184044	1	Cooling pan kit, with shelf, bakery depth
-	1184046	1	Cooling pan kit, with shelf, shallow depth
1	1184022	2	Rack hanger, G/E ser co
2	1184025	1	Stop channel
3	6660	8	Clip, side rack support
4	1175438	2	Rack guide, 11 pos. shallow
	1175439	2	Rack guide, 11 pos. bakery
5	1184019	1	Shelf, open rack, shallow
	1184023	1	Shelf, open rack, bakery
*	1146304	18	10 x 1/2 Phillips screw

* not shown on drawing.

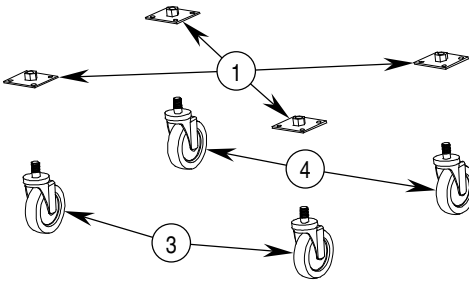
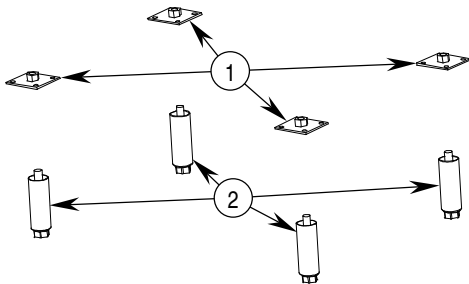
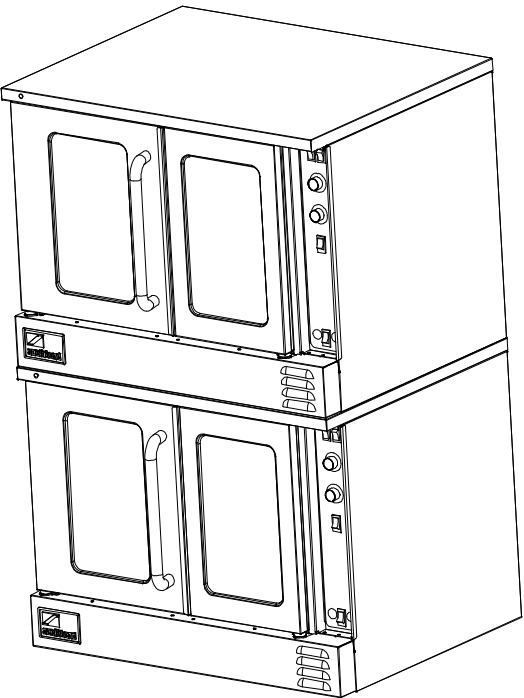
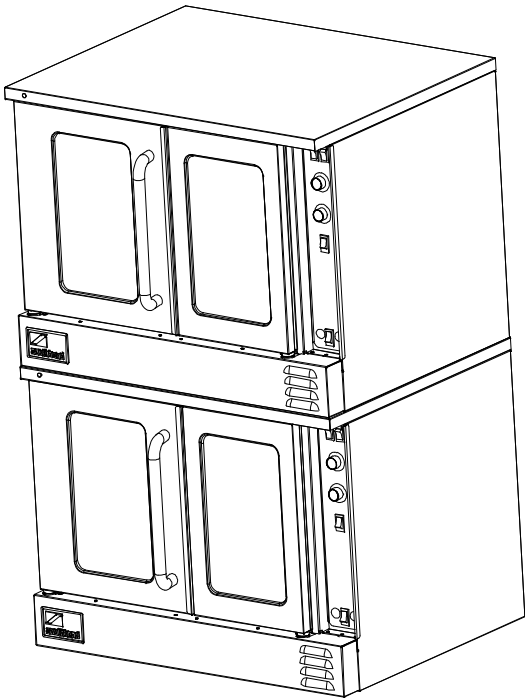
Double-Deck Oven Stacking Parts



Key	Part Number	Qty	Description
1	1146213	2	Bolts
2	1175085	1	Tie bracket



Leg Parts for Double-Deck Ovens



Key	Part Number	Qty	Description
1	1172788	4	Leg pad
2	1174259	4	SS leg, 3/4" stud
*	1174260	1	Leg package (set of four legs only)
3	1174264	2	Caster with brake
4	1174263	2	Caster without brake
*	1174265	1	Set of four casters (two with brake, two without brake)
*	1146213	16	3/8 x 16 x 1 hex head bolt
*	1146513	16	3/8 lock washer
*	1146522	16	3/8 flat washer

* not shown on drawing.

FULL SIZE ELECTRIC CONVECTION OVENS

User & Maintenance Notes:

PARTS MANUAL

G & SL-SERIES

ELECTRIC CONVECTION OVENS



Commercial Food Equipment Service Association



A product with the Southbend name incorporates the best in durability and low maintenance. We all recognize, however, that replacement parts and occasional professional service may be necessary to extend the useful life of this unit. When service is needed, contact a Southbend Authorized Service Agency, or your dealer. To avoid confusion, always refer to the model number, serial number, and type of your unit.

Southbend
1100 Old Honeycutt Road, Fuquay-Varina, NC 27526
www.southbendnc.com