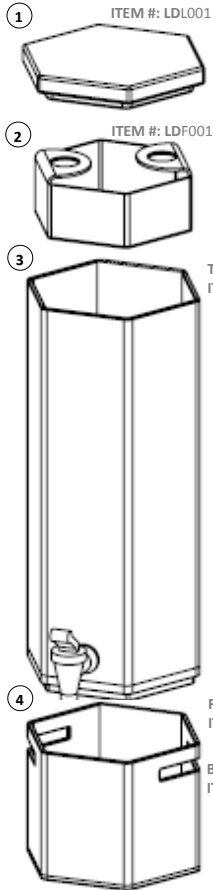


HEXAGON BEVERAGE DISPENSER

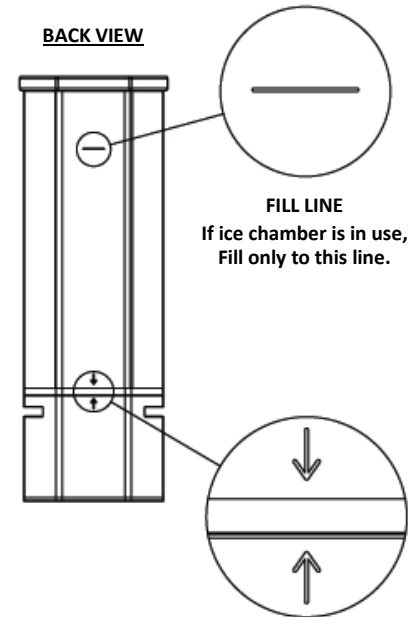
PARTS:



Your Beverage Dispenser includes the following parts:

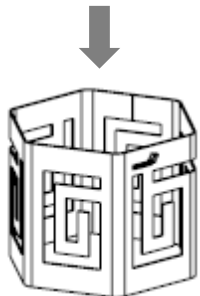
1. Lid
2. Ice Chamber
 - a. This exclusive feature makes refilling your ice easy. When in use the tray is easily lifted out of the tank in one quick action. There is a "fill line" located at the back of the tank itself that conveniently indicates the accepted level for your beverage contents when the Ice Chamber is in use. By keeping the ice separate, this tool maintains the taste of your beverages while keeping them cool.
3. Tank
4. Acrylic Base
 - a. To assemble, follow these instructions:
 - i. Locate the down arrow labeled on the back of your new dispenser tank.
 - ii. Now locate the up arrow labeled on the acrylic base.
 - iii. Fit the tank and base together and align the two arrows for a proper fit.

CAPACITY:
Hexagon Beverage Dispenser (without Ice Chamber): 2.4 Gallons
Hexagon Beverage Dispenser (with Ice Chamber): 2 Gallons



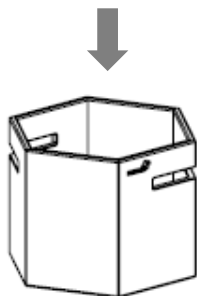
Please make sure to wash your beverage dispenser tank and ice chamber before each use!

OPTIONAL ACCESSORIES:



STAINLESS STEEL

ITEM #: LD101 PART OF SET: LD115



NATURAL BAMBOO

ITEM #: LD109 PART OF SET: LD114

BLACK GLOSS BAMBOO

ITEM #: LD118 PART OF SET: LD119

BASE COVERS:

The base of the tank easily fits into our exclusive stainless steel, black gloss and natural bamboo base covers.

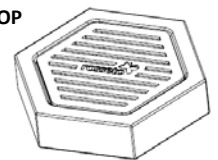
Note: Please be sure to face the Rosseto logo toward the front to ensure a proper fit. The grooves along either side of the base covers should match up exactly with the same grooves on the tank.

DRIP TRAY:

Made of stainless steel and acrylic parts, the drip tray complements the beverage dispenser in stylistic and operational aspects. Placed directly under the beverage dispenser faucet, the drip tray serves as a catch basin for minor spills.

STAINLESS STEEL METAL TOP
ITEM #: LD100-M

CLEAR ACRYLIC BASE
ITEM #: LD107-B



NEED ASSISTANCE?

Please contact our customer support at (847)763-1215 and we'll be happy to assist with any assembly questions, comments or concerns.

ROSSETO® 3600 W. Pratt Avenue. Lincolnwood, IL 60712

Visit our website at: www.rosseto.com

CARE INSTRUCTIONS:

Keep your Beverage Dispenser in good working order with these cleaning and handling tips:

- Do not place any part of your Beverage Dispenser in the freezer or dishwasher.
- Avoid using alcohol, ammonia, or any chemical-based cleaners.
- Do not use abrasive materials such as scrapers or metal-based brushes.
- Handwash all Acrylic and Bamboo parts with warm soapy water. Rinse and dry with a soft cloth for best results.

ACRYLIC:

- Use only for cold beverages.
- **WARNING: DO NOT USE HOT LIQUIDS WITH THIS BEVERAGE DISPENSER.**

BAMBOO:

- Stow your Bamboo Base Cover in a dry and ventilated place.
- Keep your Bamboo Base Cover away from heat and direct sunlight.

STAINLESS STEEL:

- Handwash your Stainless Steel Base Cover with a damp washcloth. Use any glass surface or stainless steel cleaning product to remove surface stains.
- To keep it protected, stow your Stainless Steel Base Cover in the box it came in.

FAUCET:

STEP 1 Detach faucet from beverage dispenser by unscrewing the washers inside the tank.

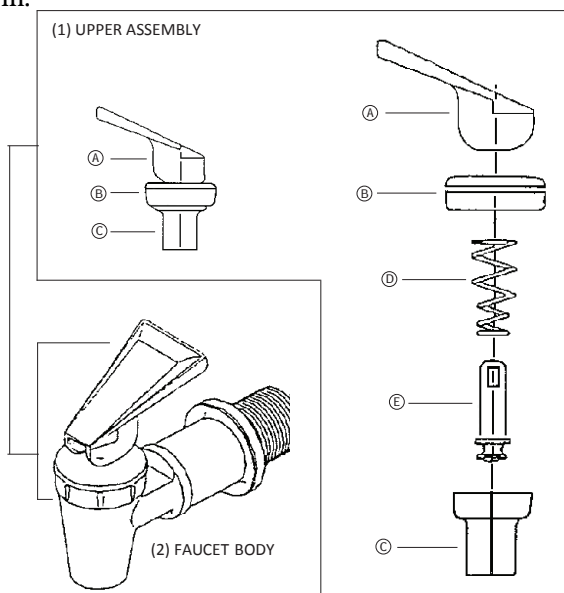
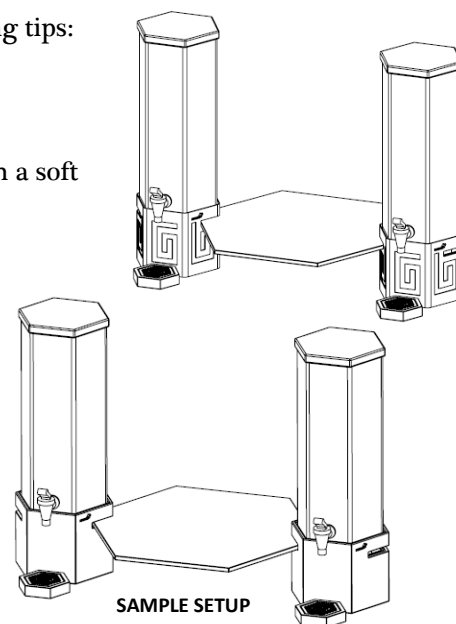
STEP 2 Remove the entire **upper assembly** (1) by unscrewing the **bonnet** (B).

STEP 3 Next, dismantle the upper assembly. Pushing the **seat cup** (C) towards the bonnet will allow you to pull the **handle** (A) off easily. Remove **spring** (D) and **stem** (E).

STEP 4 Clean all parts, including **faucet body** (2) in hot soapy water. A sanitizing solution may be used if needed. Rinse with plenty of clear hot water.

STEP 5 Snap seat cup over the stem end by applying direct pressure. Reassemble in reverse.

STEP 6 Screw upper assembly back onto body. Hand tighten only!



PACKAGING:

Rosseto cares about keeping your product protected and keeping the environment clean! That's why we use recyclable premium molded foam packaging made from polyisocyanate and combination polyether (PU). If you are not using it to stow your Beverage Dispenser, please make sure to recycle.

For a list of Polyurethane Recycling Companies near you, please visit:

<http://www.recyclingplasticwaste.com/recyclers/usa/polyurethane/>



NEED ASSISTANCE?

Please contact our customer support at (847)763-1215 and we'll be happy to assist with any assembly questions, comments or concerns.

ROSSETO® 3600 W. Pratt Avenue. Lincolnwood, IL 60712

Visit our website at: www.rosseto.com