

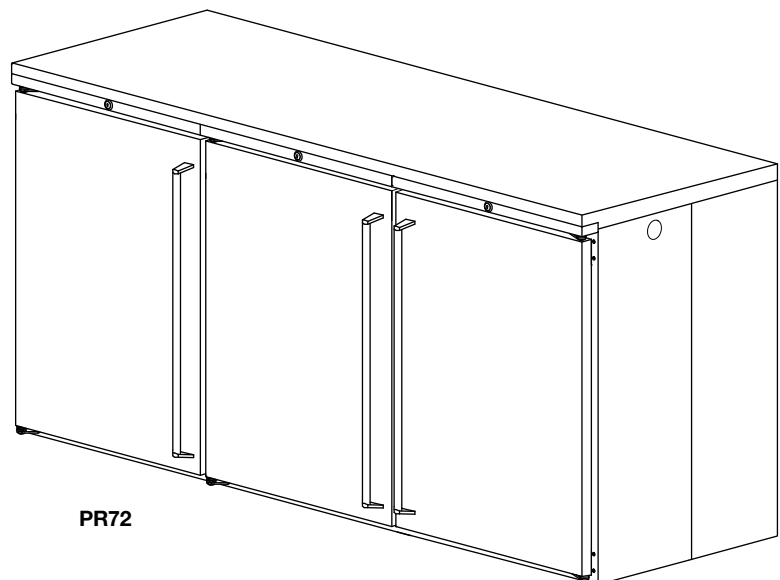
CUSTOM PASS-THRU CABINETS with REMOTE REFRIGERATION

Perlick Features

- Available with two or three doors on each side.
- Self-closing field reversible doors with locks.
- Two inch foamed-in-place insulation provides greater energy efficiency and structural strength.
- Low-E glass doors improve insulation and resist condensation on the glass.
- Four lights fully illuminate interior.
- Heavy-duty, reinforced base will not bend or sag.
- Heavy-duty polyethylene door sill.
- Stainless steel exterior.
- Heavy-duty stainless steel hinges.
- Epoxy coated evaporator coil.
- Optional draft beer dispensing system available with a variety of dispensing head styles. (PR72 Only)
- Vinyl coated shelves.
- Stainless steel top included.
- Multiple door finish options.

MODEL NOS.

- PR48 Series
- PR72 Series



PR72

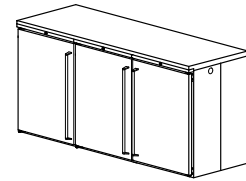
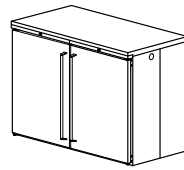
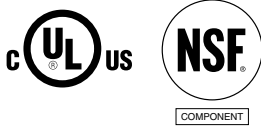


8300 West Good Hope Road • Milwaukee, WI 53223 • Phone 414-353-7060 • Fax 414-353-7069
Toll Free 800-558-5592 • E-Mail: Perlick@Perlick.com • www.Perlick.com

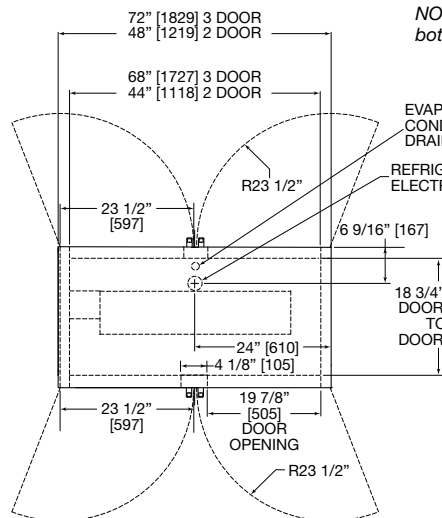
Form No. 091005
Rev. 10.12.09

Sizes and Specifications Custom Pass-Thru Cabinets with Remote Refrigeration

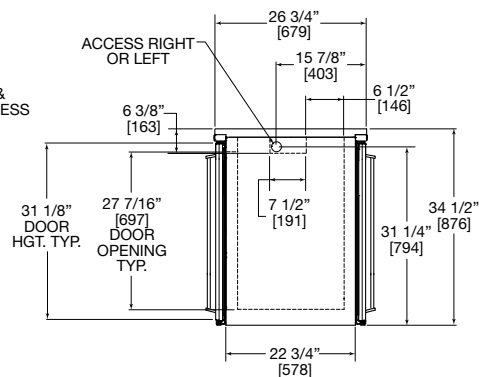
Job _____
 Area _____
 Item No. _____
 Model No. _____



MODEL NOS.		PR48	PR72		
NUMBER OF DOORS		2 Door	3 Door		
CABINET DIMENSIONS (mm)	Length	48" (1219)	72" (1829)		
	Depth	26 ³ / ₄ " (679)	26 ³ / ₄ " (679)		
	Height	34 ¹ / ₂ " (876)	34 ¹ / ₂ " (876)		
CASE CAPACITY (based on 12oz. Long Neck bottle)		15	24		
AMPS		.9	.9		
EVAPORATOR CAPACITY @ 20° F (BTU/HR)		1900	2300		
Ship Wt. Lbs. (kg.)		310 (141)	400 (181)		
INTERIOR	Door sill: High strength polyethylene. Door pan and ceiling: High strength polystyrene. Floor pan and Walls: Stainless steel. Includes pilasters, (2) vinyl coated shelves and floor rack per door, and interior lights.				
EXTERIOR	Front, back, top and sides stainless steel. Bottom galvanized steel. See optional accessories for door finishes.				
DOOR HINGING	Stainless steel hinges with standard locations as illustrated. For special hinging specify hinge locations starting from left to right. Field reversible.				
DOOR HARDWARE	Door handles: Choice of full length stainless steel, classis 6" black vinyl wrapped pull or top mounted stainless steel pull tab. Lock finish: chrome				
REFRIGERATION	Aluminum fin and copper tube evaporator, epoxy coated coil.				
ELECTRICAL	115V, 60Hz., 1 phase AC. Contact Perlick for other voltage/ frequency requirements.				
PLUMBING	Cabinet comes with 4 feet of 1/2" vinyl tubing for evaporator drain. The tubing exits from the center bottom of the cabinet thru a 15/16" Dia. hole in back of the mullion.				
INSULATION	Foamed-in-place polyurethane, 2" walls, 1 1/2" top.				
OPTIONAL ACCESSORIES & MODIFICATIONS	<table border="0"> <tr> <td style="vertical-align: top;"> <ul style="list-style-type: none"> • Leg set • Tapping kit - 3 door only • Laminated top • Laminated ends • Compressor right • Brass hardware (classic & full length only) • Caster sets • Base plates • Floor access kit </td> <td style="vertical-align: top; padding-left: 20px;"> Door finishes Black vinyl coated Stainless steel Customer choice of laminate Painted in color of choice Prepared for field lamination Glass door with black vinyl coated frame Glass door with stainless steel frame Glass door with laminated frame </td> </tr> </table>			<ul style="list-style-type: none"> • Leg set • Tapping kit - 3 door only • Laminated top • Laminated ends • Compressor right • Brass hardware (classic & full length only) • Caster sets • Base plates • Floor access kit 	Door finishes Black vinyl coated Stainless steel Customer choice of laminate Painted in color of choice Prepared for field lamination Glass door with black vinyl coated frame Glass door with stainless steel frame Glass door with laminated frame
<ul style="list-style-type: none"> • Leg set • Tapping kit - 3 door only • Laminated top • Laminated ends • Compressor right • Brass hardware (classic & full length only) • Caster sets • Base plates • Floor access kit 	Door finishes Black vinyl coated Stainless steel Customer choice of laminate Painted in color of choice Prepared for field lamination Glass door with black vinyl coated frame Glass door with stainless steel frame Glass door with laminated frame				



NOTE: This equipment is intended for the storage and display of non-potentially-hazardous bottled or canned products only.



8300 West Good Hope Road • Milwaukee, WI 53223 • Phone 414-353-7060 • Fax 414-353-7069
 Toll Free 800-558-5592 • E-Mail: Perlick@Perlick.com • www.Perlick.com