

# L5HS3: ITEM PROFILE

## 5 PIECE SET



	weight	length	width	height	cubic feet	UPC	
<b>L5HS3   5 Piece Set</b> (see below)							
item	28.18 LB	14.94 L	14.25 W	7.81 H	0.962 FT <sup>3</sup>	075536-38350-7	
case	28.18 LB	14.94 L	14.25 W	7.81 H	0.962 FT <sup>3</sup>	1-00-75536-38350-4	1 PACK
HTS	7323.91.0000		Hi/Ti	5/6	N/A BASE	N/A RIM	N/A HEIGHT

### DESCRIPTION

#### QUICK DESCRIPTION

Seasoned Cast Iron 5 Piece Set with 10.5 Inch Griddle, 8 Inch Skillet, 10.25 Inch Skillet, 5 Quart (10.25 Inch) Dutch Oven and Cast Iron Cover that fits 10.25 Inch Skillet and 5 Quart Dutch Oven

#### DETAILED DESCRIPTION

The Lodge 5 piece set combines the most needed cast iron cookware for a complete kitchen. This set makes the perfect gift that will be cherished for decades.

#### MADE IN THE USA



*click image for product specs*



#### LODGE MANUFACTURING CO.

PO BOX 380  
SOUTH PITTSBURG,  
TENNESSEE 37380

423-837-7181  
INFO@LODGEFG.COM  
ORDERS@LODGEFG.COM

03/27/2017

### ITEM DETAILS

#### FEATURES

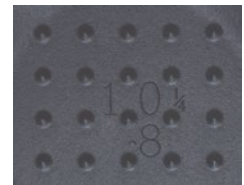
- Seasoned with oil for a natural, easy-release finish that improves with use
- Easy care: hand wash, dry, rub with cooking oil
- The right tools to sear, sauté, simmer, bake, broil, braise, roast, fry or grill
- At home in the oven, on the stove, on the grill or over the campfire
- Great for induction cooktops
- Brutally tough for decades of cooking
- Unparalleled in heat retention and even heating
- Cast iron cover features self-basting tips
- Iron cover fits the 10.25 inch skillet and Dutch Oven

#### NOTES:

Foundry seasoned cast iron. Full color carton, in English, Spanish and French, with use & care booklet.

### AVAILABLE IMAGES

[Click here for photos.](#)



self-basting tips



[Click the tab for more info](#)

[General Category](#)

[Use & Care](#)

[Lodge History](#)