



Bottle Coolers

- ❑ ADBC-50 ❑ ADBC-65
- ❑ ADBC-80 ❑ ADBC-94

STANDARD FEATURES

⌘ HEAVY DUTY CONSTRUCTION

Top is made of solid 18" gauge stainless steel for easy cleaning and anodized aluminum bottle rails. Wear resistant black vinyl exterior, and galvanized interior and coved corners.

Compressor is mounted on the right side with service friendly slide out rail system.

⌘ ENHANCED REFRIGERATION SYSTEM

Factory engineered oversized and balanced refrigeration system. CFC free R-134a refrigerators maintain temperature between 28°F to 38°F, keeping beers ice cold.

⌘ ANALOG THERMOSTAT

⌘ HIGH DENSITY POLYURETHANE INSULATION

The entire unit has a Ecomate® CFC free polyurethane insulation foamed in place for extra strength and energy efficiency.

⌘ RUGGED, REMOVABLE BOTTLE CAP OPENER AND CAP CATCHER.

⌘ HEAVY DUTY ADJUSTABLE BIN DIVIDERS, EPOXY COATED.



ADBC-50



ADBC-65



ADBC-94

OPTIONS & ACCESSORIES

Additional bin dividers

3" Casters

6" Adjustable stainless steel legs

220V-50Hz-1Phase

Stainless Steel Bar Equipment

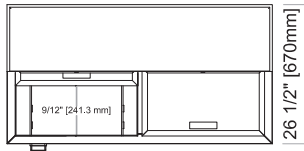


ISO 9001

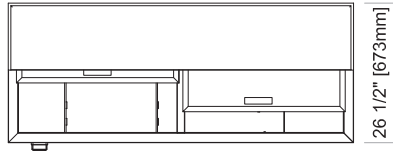
MODEL	LIDS	CAPACITY 12 Oz Can	CAPACITY 12 Oz Bottles	AMPS	HP	VOLTAGE	NEMA PLUG	CORD LENGHT	CABINET DIMENSIONS			SHIPPING	
									L	D *	H	WT.	CUBES
SOLID DOOR													
ADBC-50	2	704	286	5.9	1/4	115/60/1	5-15P	8'	50 1/2"	26 1/2"	33 3/8"	236	37
ADBC-65	2	890	360	6.2	1/3	115/60/1	5-15P	8'	65 1/2"	26 1/2"	33 3/8"	275	50.5
ADBC-80	3	1,150	547	6.2	1/3	115/20/1	5-15P	8	80"	26 1/2"	33 3/8"	315	57
ADBC-94	3	1,408	672	6.2	1/2	115/60/1	5-15P	8'	95"	26 1/2"	33 3/8"	379	69

* Depth does not include 1" bumper

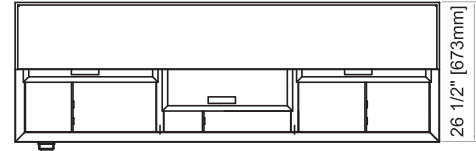
ABDC-50 Top



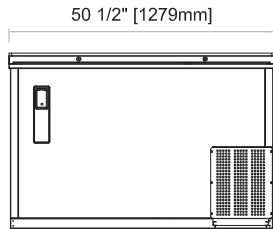
ABDC-65 Top



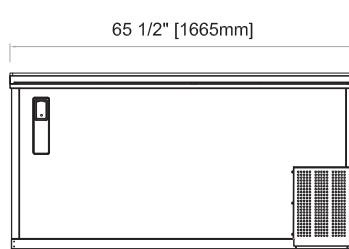
ABDC-80 Top



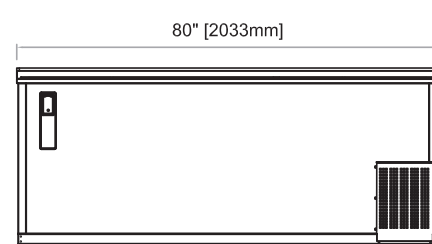
ABDC-50 Front



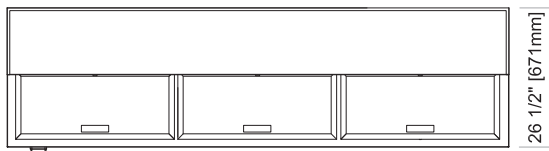
ABDC-65 Front



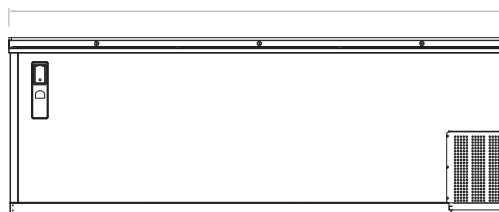
ABDC-80 Front



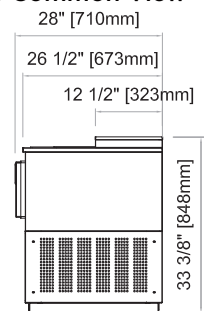
ABDC-94 Top



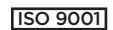
ABDC-94 Front



ABDC Common View



* Specifications



④ CONSTRUCTION

- 18 gauge stainless steel top and stylish black vinyl finish front, sides and back. Interior built of galvanized steel walls with covered corner stainless steel floor.
- The entire cabinet has a 1-1/2" Ecomate® CFC-free, polyurethane insulation foamed-in-place.

④ STANDARD EXTRAS

- Rugged, removable bottle cap opener and cap catcher.
- Heavy duty adjustable bin dividers, epoxy coated.

④ REFRIGERATION SYSTEM

- Oversized and balanced refrigeration system.
- Self-contained capillary tube system using environmentally-friendly and CFC-free refrigerant, R-134a holding temperature at 28°F to 38°F.
- Front breathing/side mount compressor for ease of service and placement in narrow spaces. Condensing unit is behind the front grill, slides out for easy cleaning and maintenance.

- Forced air cooling system for faster cooling and constant temperature in the cabinet.
- Large fan motor and fan blades for better air circulation.
- Self contained system, no plumbing necessary.
- Analog thermostat.

④ ELECTRICAL

- The whole unit is completely pre-wired at factory with cord and plug set included and ready for final connection to a 115/60/1 phase.
- 220V/50Hz/1ph available from factory.

④ WARRANTY

Continental USA & Canada:

- **One year** labor and parts warranty.
- **Five year** compressor warranty.
- **International:** one year parts only.

* Asber's specification are subject to change without notice as we continue to make product improvements.