



CATALOG OF REPLACEMENT PARTS

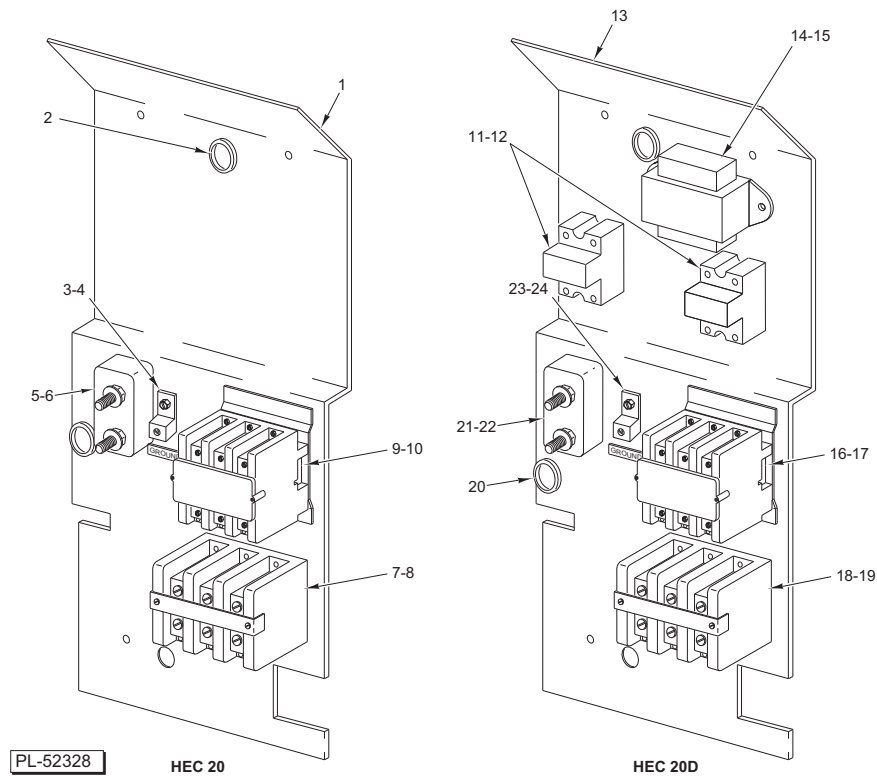
HALF SIZE ELECTRIC CONVECTION OVENS

HEC20
HEC20D

ML-114574
ML-114576

TABLE OF CONTENTS

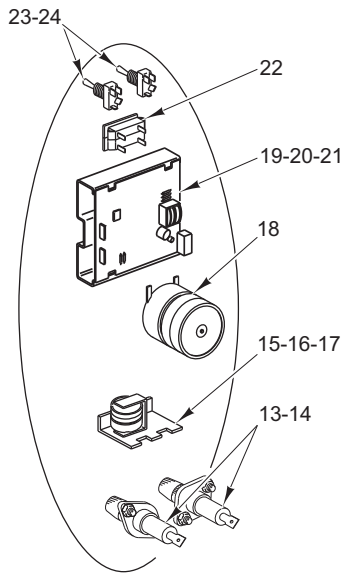
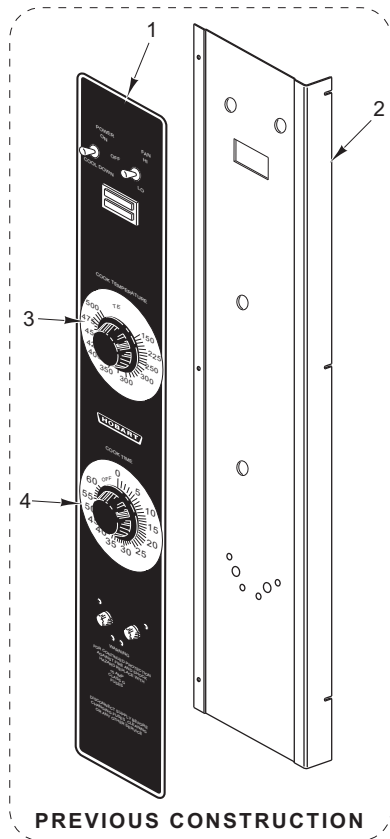
3	COMPONENT PANEL
5	CONTROL PANEL (HEC20)
7	CONTROL PANEL (HEC20D) COMPUTERIZED CONTROLS
8	CABINET
11	DOOR
12	ELECTRIC HEATERS



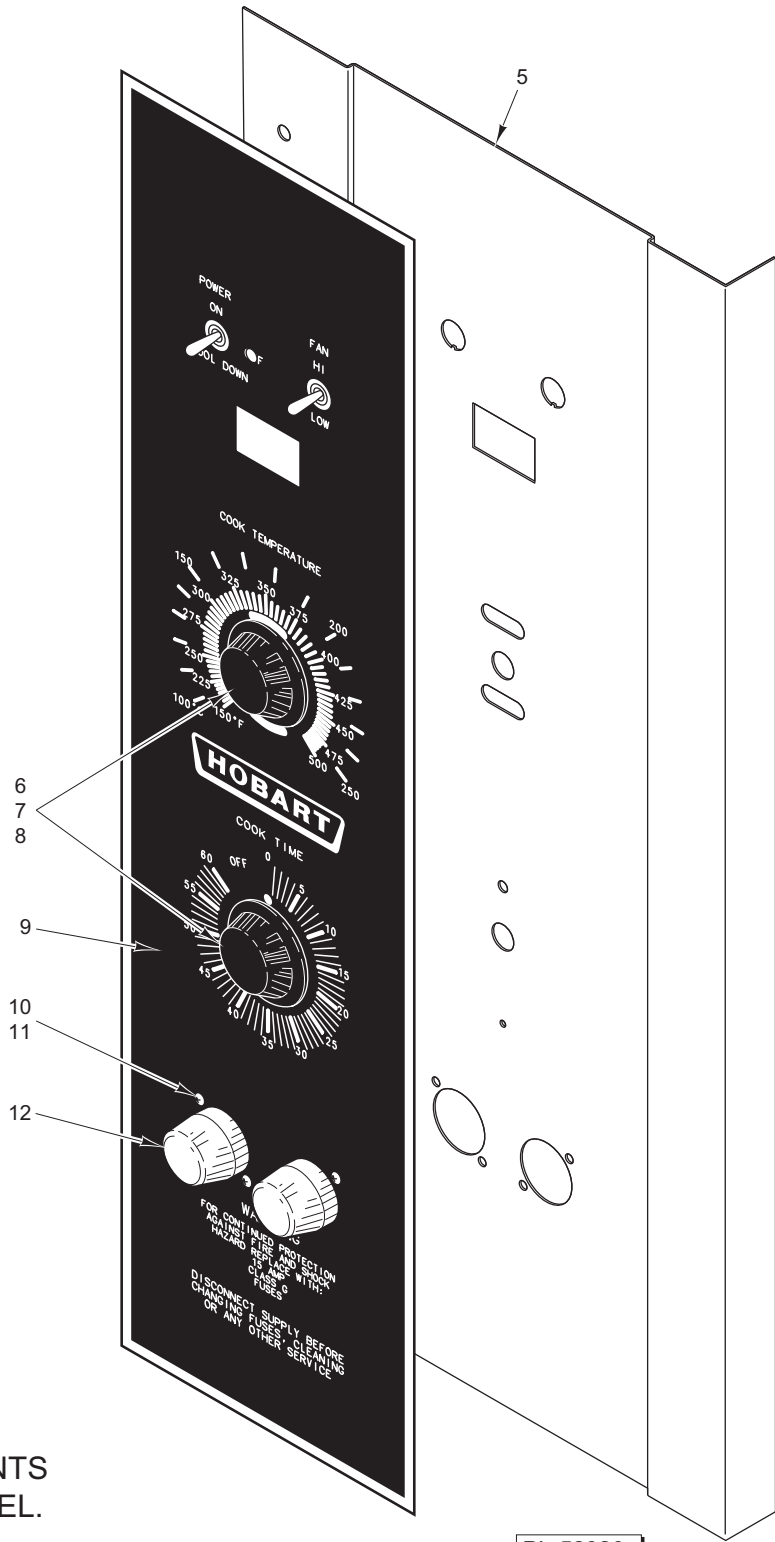
COMPONENT PANEL

ILLUS.	PART NO.	NAME OF PART	AMT.
PL-52328			
1	00-422712-00001	Panel – Component	1
2	FE-016-32	Bushing – Snap (Electrical)	2
3	00-417856-00001	Lug – Grounding (With Set Screw)	1
4	SD-034-49	Self-Tapping Screw 8-32 x 1/2 Hex Washer Hd., Type T	2
5	00-417934-000G1	Block Assy. – Porcelain	1
6	SD-034-52	Self-Tapping Screw 8-32 x 1 Slotted Hex Washer Hd., Type T	2
7	00-410472-00008	Terminal Block	1
8	SD-034-49	Self-Tapping Screw 8-32 x 1/2 Hex Washer Hd., Type T	2
9	00-411497-000C5	Contactor (3-Pole)	1
10	SD-034-49	Self-Tapping Screw 8-32 x 1/2 Hex Washer Hd., Type T	2
11	00-821875-00002	Relay – Solid State (50 Amp.)	2
12	SD-034-49	Self-Tapping Screw 8-32 x 1/2 Hex Washer Hd., Type T	4
13	00-422712-00001	Panel – Component	1
14	00-421758-000G4	Transformer Assy.	2
15	SD-032-07	Self-Tapping Screw 10-24 x 1/2 Hex Washer Hd., Type TT	2
16	00-411497-000C5	Contactor (3-Pole)	1
17	SD-034-49	Self-Tapping Screw 8-32 x 1/2 Hex Washer Hd., Type T	2
18	00-410472-00008	Terminal Block	1
19	SD-032-07	Self-Tapping Screw 10-24 x 1/2 Hex Washer Hd., Type TT	2
20	FE-016-32	Bushing – Snap (Electrical)	2
21	00-417934-000G1	Block Assy. – Porcelain	1
22	SD-034-52	Self-Tapping Screw 8-32 x 1 Slotted Hex Washer Hd., Type T	2
23	00-417856-00001	Lug – Grounding (With Set Screw)	1
24	SD-034-49	Self-Tapping Screw 8-32 x 1/2 Hex Washer Hd., Type T	2

HALF SIZE ELECTRIC CONVECTION OVENS REPLACEMENT PARTS



CONTROL PANEL COMPONENTS VIEWED FROM BACK OF PANEL.

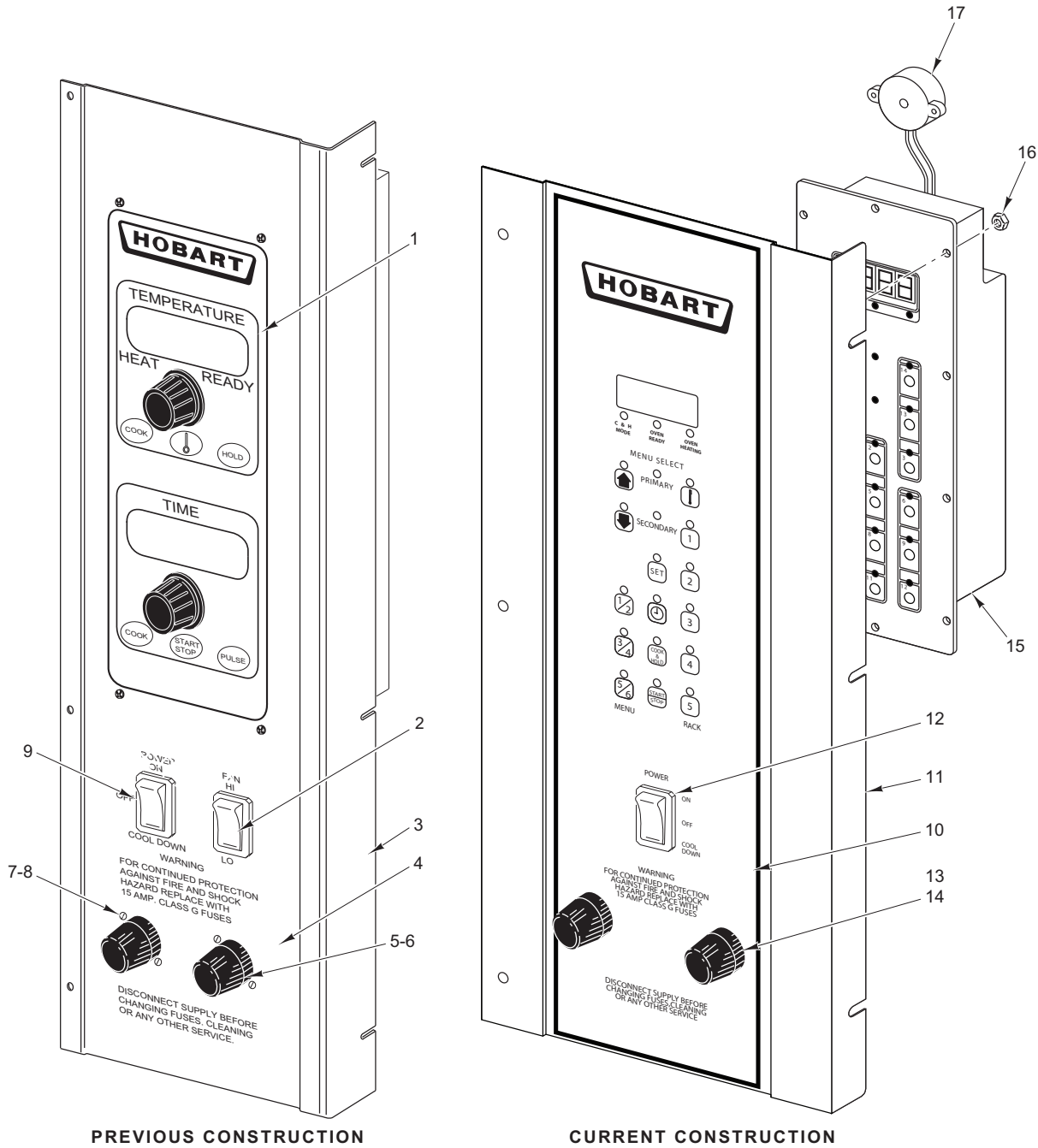


PL-52320

CONTROL PANEL (HEC20)

CONTROL PANEL (HEC20)

ILLUS. PL-52320	PART NO.	NAME OF PART	AMT.
1	00-360878-00001	Overlay – Control Panel (Previous Construction).....	1
2	00-422562-000G1	Panel – Control (Previous Construction)	1
3	00-358539-00001	Plate – Temperature Dial (Fahrenheit).....	1
4	00-358538-00001	Plate – Dial Timer	1
5	00-428131-000G1	Panel – Control (Current Construction)	1
6	00-411242-00001	Knob	2
7	SC-114-83	Mach. Screw 6-32 x 1/4 Pan Hd.....	2
8	WS-028-20	Washer.....	2
9	00-428123-00001	Overlay – Panel (Current Construction).....	1
10	SC-114-27	Mach. Screw 8-32 x 1/2 Phil. Pan Hd.....	4
11	NS-046-51	Nut Assy. 8-32 Hex	4
12	00-881236	Holder – Fuse	2
13	FE-019-40	Fuse (300 V., 15 Amp.)	2
14	FE-023-55	Holder – Fuse	2
15	00-411499-00003	Buzzer (230 V.)	1
16	SD-034-49	Self-Tapping Screw 8-32 x 1/2 Hex Washer Hd., Type T	1
17	WL-014-10	Lockwasher 1/4 Ext. Shakeproof.....	1
18	00-411690-00002	Timer (200-240 V.) (1 Hr.)	1
19	00-353613-00002	Controller – Temperature	1
20	SC-114-83	Mach. Screw 6-32 x 1/4 Pan Hd.....	2
21	WS-028-20	Washer.....	2
22	00-354575-00001	Light Indicator (On/Heat) (200-240 V.).....	1
23	00-340324-00008	Switch (On/Off/Cooldown) (4 P.D.T.).....	1
24	00-340324-00009	Switch – Fan (High/Low) (D.P.D.T.)	1
	00-353589-00001	Probe – Temperature	1



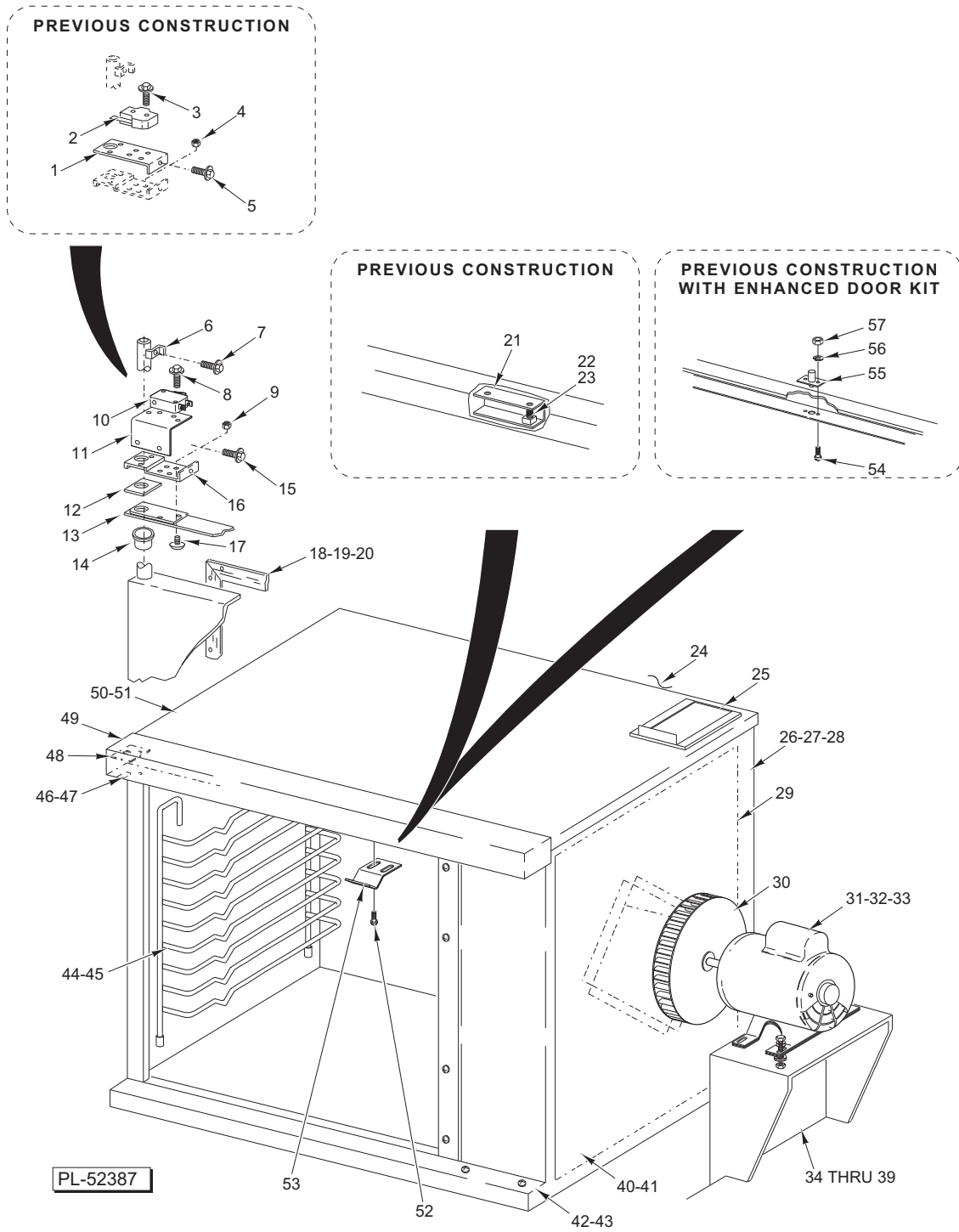
PL-52420

CONTROL PANEL (HEC20D) COMPUTERIZED CONTROLS

CONTROL PANEL (HEC20D) COMPUTERIZED CONTROLS

ILLUS. PL-52420	PART NO.	NAME OF PART	AMT.
1	00-355903-00005	Controller (With Cook, Hold , & Pulse)	1
2	00-358628-00002	Switch –Rocker (2 Position).....	1
3	00-422665-000G1	Panel – Control	1
4	00-422667-00001	Overlay	1
5	FE-023-55	Holder – Fuse	2
6	FE-019-40	Fuse (300 V., 15 Amp.)	2
7	NS-046-51	Nut Assy. 8-32 Hex	4
8	SC-114-27	Mach. Screw 8-32 x 1/2 Phil. Pan Hd.....	4
9	00-358628-00001	Switch – Rocker (3 Position).....	1
10	00-426699-00001	Overlay (HEC20D).....	1
11	00-426694-000G1	Panel – Control	1
12	00-358628-00001	Switch – Rocker (3 Position).....	1
13	FE-023-55	Holder – Fuse	2
14	FE-019-40	Fuse (300 V., 15 Amp.)	2
15	00-424846-00001	Controller (Watlow 734)	1
16	NS-044-05	Nut Assy. 6-32 Hex	6
17	00-423918-00001	Buzzer – Electronic.....	1
	00-920883-00002	Probe – Thermocouple (With 40 In. Leads).....	1
	00-342132-00001	Guard – Thermo.....	1

HALF SIZE ELECTRIC CONVECTION OVENS REPLACEMENT PARTS

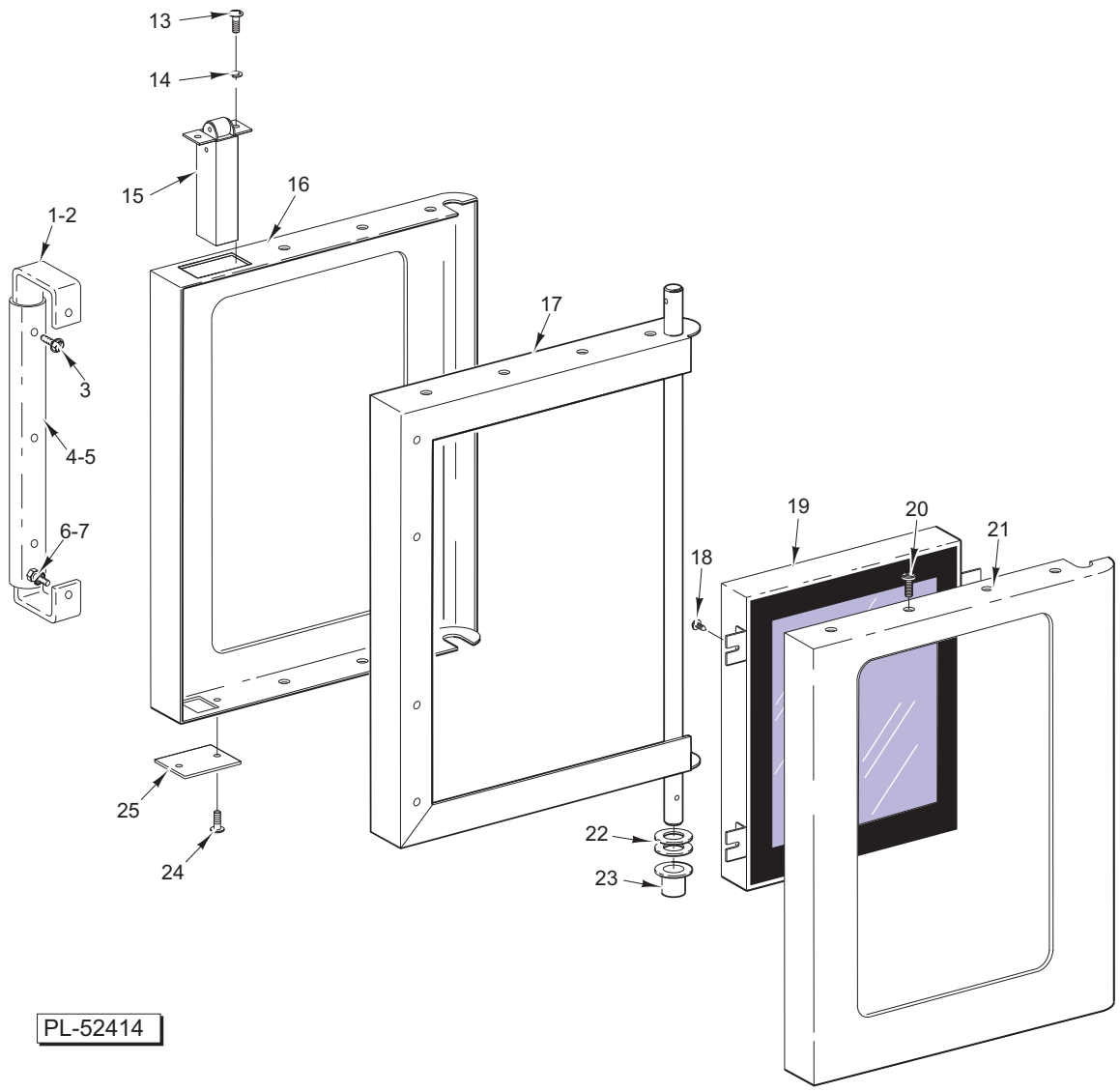
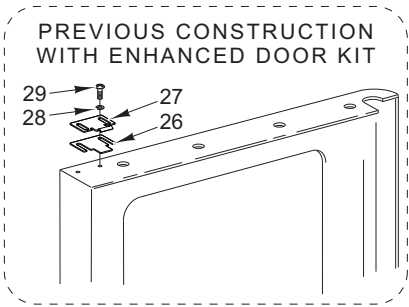
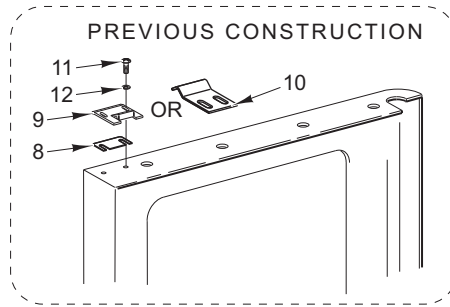


CABINET

ILLUS.	PART NO.	NAME OF PART	AMT.
PL-52387			
1	00-353780-00001	Bracket – Switch (Previous Construction)	1
2	00-353782-00001	Switch – Door (Previous Construction).....	1
3	SD-034-47	Self-Tapping Screw 6-32 x 1 Slotted Hex Washer Hd., Type T.....	2
4	NS-046-52	Nut 1/4-20 Hex (KEPS)	2
5	SD-036-30	Self-Tapping Screw 8-32 x 1/4 Slotted Hex Washer Hd., Type T	1
6	00-422938-00001	Striker – Door Switch	1

CABINET (CONT.)

ILLUS.	PART NO.	NAME OF PART	AMT.
	PL-52387		
7	SD-034-52	Self-Tapping Screw 8-32 x 1 Slotted Hex Washer Hd., Type T.....	1
8	SD-034-47	Self-Tapping Screw 6-32 x 1 Slotted Hex Washer Hd., Type T.....	2
9	NS-046-52	Nut 1/4-20 Hex (KEPS)	2
10	00-411496-000F1	Switch – Micro (Current Construction).....	1
11	00-426854-00001	Bracket – Switch Mounting (Current Construction).....	1
12	00-353482-00001	Spacer	1
13	00-353483-00002	Plate – Door (3 Holes)	1
14	00-347080-00002	Bearing – Door Shaft	1
15	SD-036-30	Self-Tapping Screw 8-32 x 1/4 Slotted Hex Washer Hd., Type T	1
16	00-353778-00001	Support – Switch.....	1
17	SC-022-40	Mach. Screw 1/4-20 x 3/4 Phil. Flat Hd.....	2
18	00-423281-00001	Seal – Door (Latch Side)	1
19	00-423280-00001	Seal – Door (Top & Bottom).....	2
20	SD-034-05	Self-Tapping Screw 6-20 x 3/8 Phil. Pan Hd. Type AB	4
21	00-355344	Channel – Latch.....	1
22	00-417810-00003	Spring – Compression	1
23	00-411794-00001	Catch – Door.....	1
24	00-354476-00002	Back (SST)	1
25	00-354482-00001	Vent Extension.....	1
26	00-422715-00001	Panel – Side (RH) (Painted)	1
27	00-422715-00002	Panel – Side (RH) (SST)	1
28	00-422724-00002	Panel – Side (LH) (SST).....	1
29	00-347565-00001	Insulation Retainer Assy.....	1
30	00-354262-00001	Blower.....	1
31	00-422786-00002	Motor (Previous Construction)	1
32	00-428449-00002	Motor (208-230 V., 60 Hz.) (Current Construction).....	1
33	FE-023-56	Bushing – Electric Snap.....	1
34	00-347786-00002	Motor Mount Assy. (Previous Construction).....	1
35	00-422711-000G3	Motor Mount Assy. (Current Construction).....	1
36	SC-116-84	Cap Screw 5/16-18 x 1 1/8 Hex Hd.....	4
37	WS-029-46	Washer.....	4
38	NS-046-86	Nut Assy. 5/16-18 (KEPS) Hex.....	2
39	00-358723-00001	Spacer – Steel	2
40	00-360869-000G1	Blower Baffle Weldment (Enamel).....	1
41	00-360869-000G2	Blower Baffle Weldment (SST).....	1
42	00-422714-00001	Cover – Lower	1
43	00-422592-00001	Sill – Door	1
44	00-347498-00003	Guide – Rack (LH)	1
45	00-347498-00004	Guide – Rack (RH)	1
46	00-422590-00001	Support – Door Upper Reversible (Previous Construction).....	1
47	00-499269-00001	Support – Upper door (Current Construction).....	1
48	00-422588-00001	Plate – Cover	1
49	00-347593-00001	Cover – Top.....	1
50	00-422595-00001	Top (Painted) (Previous Construction).....	1
51	00-422595-00002	Top (SST) (Current Construction).....	1
52	SD-034-22	Self-Tapping Screw 10-16 x 5/8 Phil. Truss Hd., Type AB.....	2
53	00-497585-00001	Strike – Door.....	1
54	SC-115-51	Mach. Screw 10-32 x 1/2 Phil. Truss Hd.	2
55	00-347545-00001	Catch Assy. – Door	1
56	WL-019-35	Lockwasher #10 Internal.....	2
57	NS-046-88	Nut Assy. 10-32 Hex	2
	00-353948-00002	Caster Assy. (Swivel).....	2
	00-341655-00006	Caster – Swivel (6 In. High) (With Brake).....	AR
	00-341655-00007	Caster – Swivel (6 In. High) (Rigid)	AR
	00-347498-00003	Guide – Rack (LH).....	1
	00-347498-00004	Guide – Rack (RH)	1
	00-342150-00006	Leg Assy.....	1
	00-342150-00007	Leg Assy.....	1
	00-347164-00001	Leg.....	1
	00-347798-00001	Stand Assy.	2
	00-352786-00001	Rack Accessory	1
	00-347497-00002	Rack.....	AR
	00-499274-00001	Cover – Probe.....	1
	00-342154-00002	Plug – Hole	1

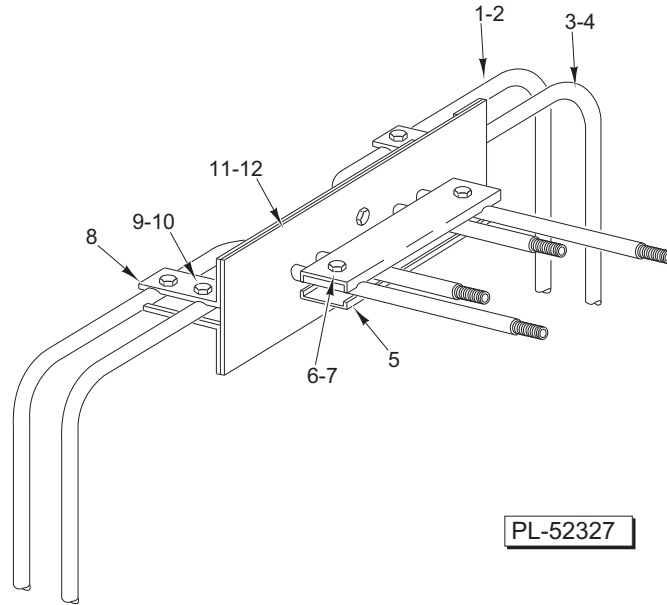


PL-52414

DOOR

DOOR

ILLUS. PL-52414	PART NO.	NAME OF PART	AMT.
1	00-357929-00001	Handle – Door (Incls. Items 2, 3, & 4) (Previous Construction).....	1
2	00-357929-00003	Handle Assy. – Black (Incls. Items 2, 3, & 4) (Current Construction).....	1
3	SC-113-98	Mach. Screw 10-24 x 1/2 Hex Washer Hd.	3
4	00-356563-00001	Grip – Front.....	1
5	00-356563-00002	Grip – Rear.....	1
6	SC-053-41	Mach. Screw 1/4-20 x 1/2 Truss Hd. (SST).....	2
7	WL-019-22	Lockwasher 1/4 External.....	2
8	00-357877-00001	Shim – Door Strike.....	2
9	00-358542-00001	Strike – Door.....	1
10	00-499270-00001	Strike – Door.....	1
11	SD-034-22	Self-Tapping Screw 10-16 x 5/8 Phil. Truss Hd., Type AB.....	2
12	WL-019-35	Lockwasher #10 Internal.....	2
13	SC-117-73	Mach. Screw 10-32 x 5/8 Phil. Truss Hd. (SST).....	2
14	WL-019-35	Lockwasher #10 Internal.....	2
15	00-497586-00001	Latch – Door Roller.....	1
16	00-360887-00001	Panel – Outer Door (With Window).....	1
17	00-359703-000G1	Door Frame Assy.	1
18	SD-034-62	Self-Tapping Screw 10-32 x 1/2 Hex Washer Hd., Type T.....	4
19	00-358534-00001	Window – Oven Door.....	1
20	SD-034-22	Self-Tapping Screw 10-16 x 5/8 Phil. Truss Hd., Type AB.....	7
21	00-360889-000G1	Panel – Inner Door (With Window).....	1
22	00-343143	Washer.....	2
23	00-347080-00002	Bearing – Door Shaft.....	1
24	SD-034-22	Self-Tapping Screw 10-16 x 5/8 Phil. Truss Hd., Type AB.....	2
25	00-499264-00001	Plate – Latch Cut Out.....	1
26	00-423847-00001	Strike – Door.....	1
27	00-423848-00001	Shim – Door Strike.....	1
28	WL-019-35	Lockwasher #10 Internal.....	2
29	SC-115-51	Mach. Screw 10-32 x 1/2 Phil. Truss Hd.	2
	00-423014-000G1	Door Kit – Enhanced.....	1
	00-353790-00001	Stop.....	1



ELECTRIC HEATERS

ILLUS.	PART NO.	NAME OF PART	AMT.
PL-52327			
1	00-351393-00002	Heater Unit Assy. (Outer) (208 V.)	1
2	00-351393-00004	Heater Unit Assy. (Outer) (240 V.)	1
3	00-351393-00001	Heater Unit Assy. (Inner) (208 V.)	1
4	00-351393-00003	Heater Unit Assy. (Inner) (240 V.)	1
5	00-342131-00001	Clamp – Large	2
6	SC-114-12	Mach. Screw 10-32 x 3/4 Slotted Hex Washer Hd.	2
7	NS-046-88	Nut Assy. 10-32 Hex (KEPS)	2
8	00-342133-00001	Clamp – Small	6
9	SC-114-02	Mach. Screw 10-32 x 3/4 Slotted Hex Washer Hd.	6
10	NS-046-88	Nut Assy. 10-32 Hex (KEPS)	6
11	00-347430-00001	Plate Assy. – Seal	1
12	00-342145-00001	Plate	1
	00-347563-00001	Cover – Heater Unit	1
	00-347494-00001	Heater Assy. (208 V.) (Incls. Items 1, 3, 5, & 7 thru 12)	1
	00-347494-00002	Heater Assy. (240 V.) (Incls. Items 2, 4, 5, 6, 8, 10, 11, & 12)	1
	00-402558-00004	Clip – Tubing	2