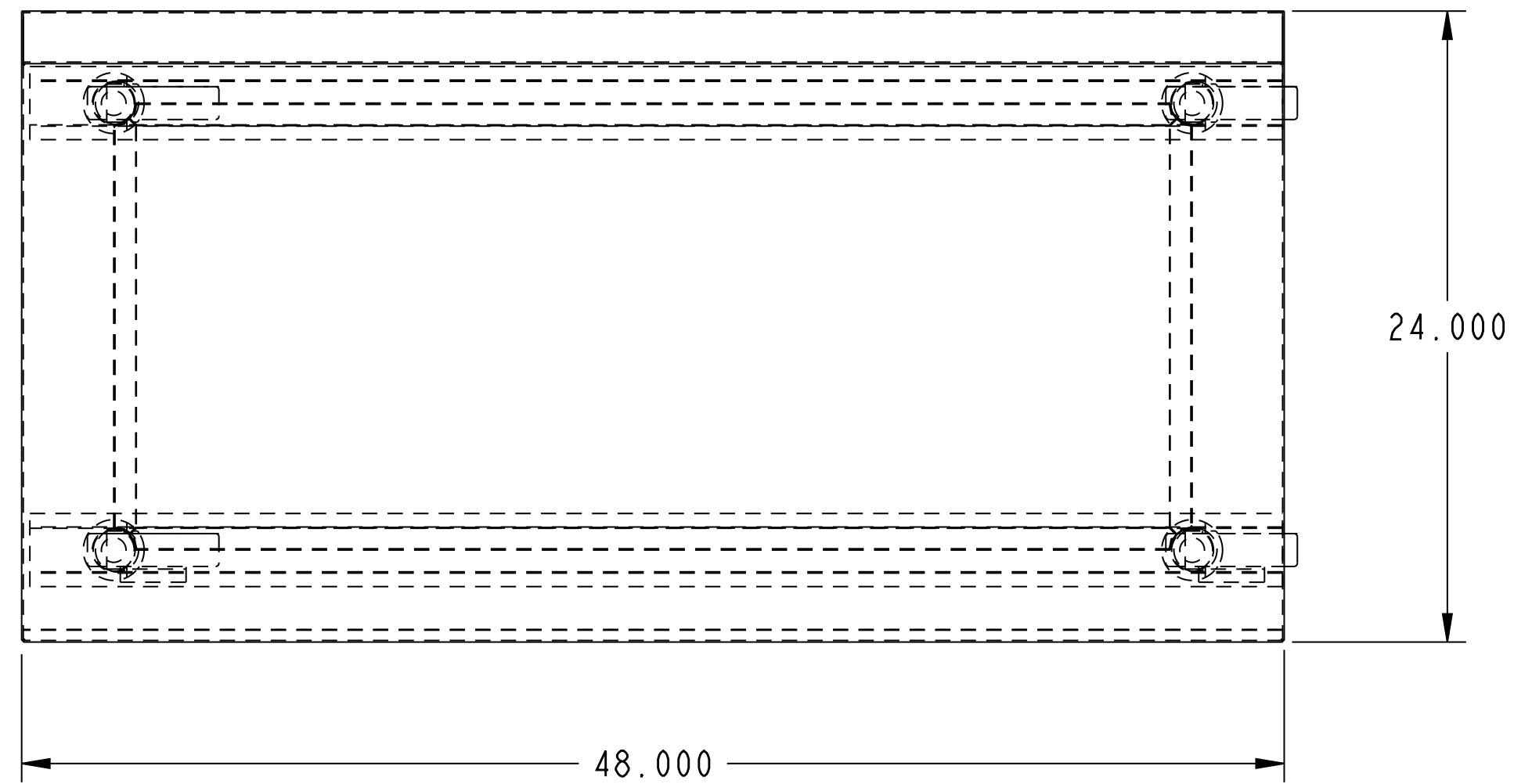


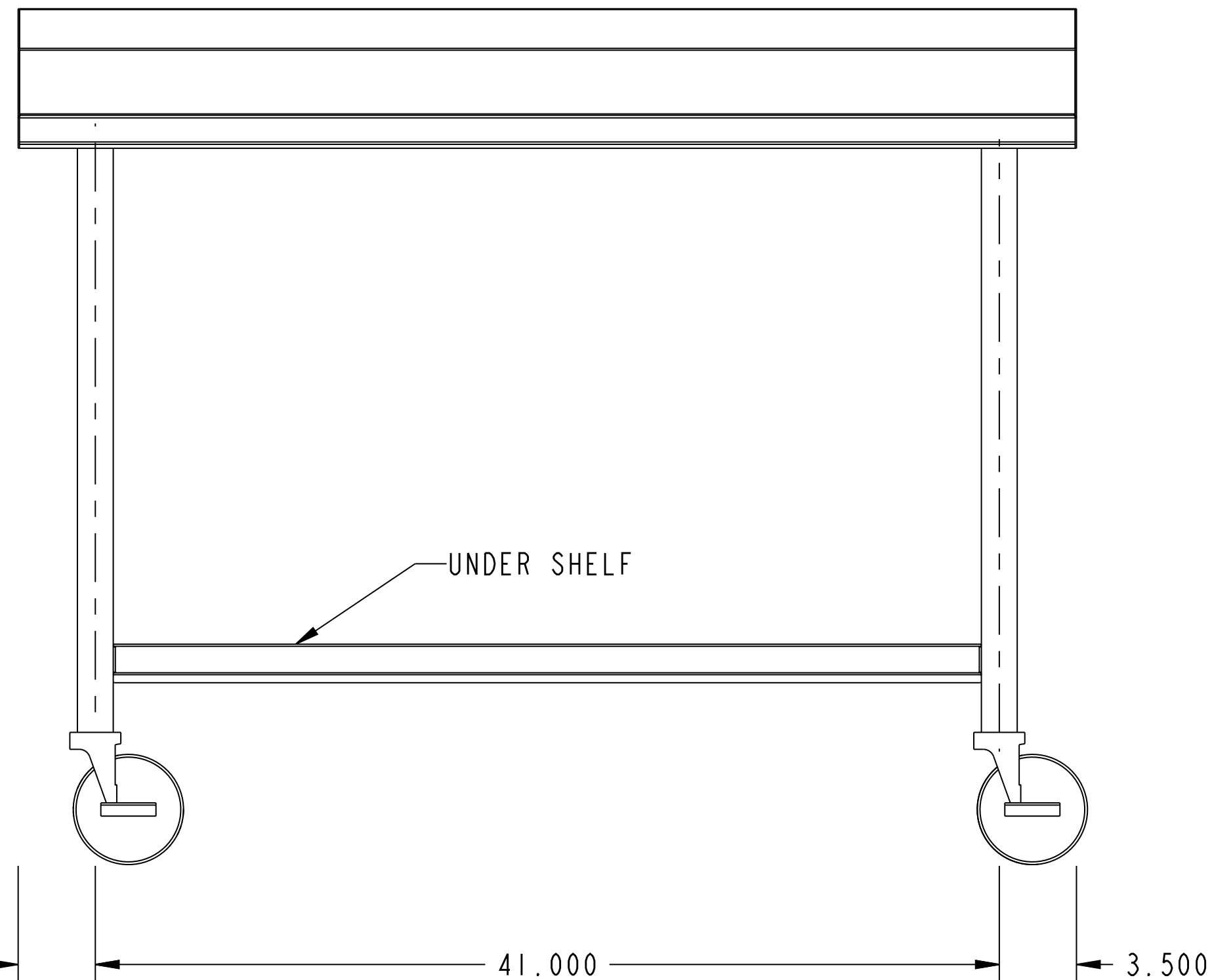
PURCHASED ITEMS

KEY	DESCRIPTION	QTY.	U/M	INV. CODE	VENDOR NAME	PART/MODEL NUMBER	PART TYPE
1	5" DIA WHEEL CASTER W/ BRAKE	2	EA	BI	COMPONENT	CMS4-5BBN-1	PART
2	5" DIA WHEEL CASTER W/O BRAKE	2	EA	BI	COMPONENT	CMS4-5BPN	PART

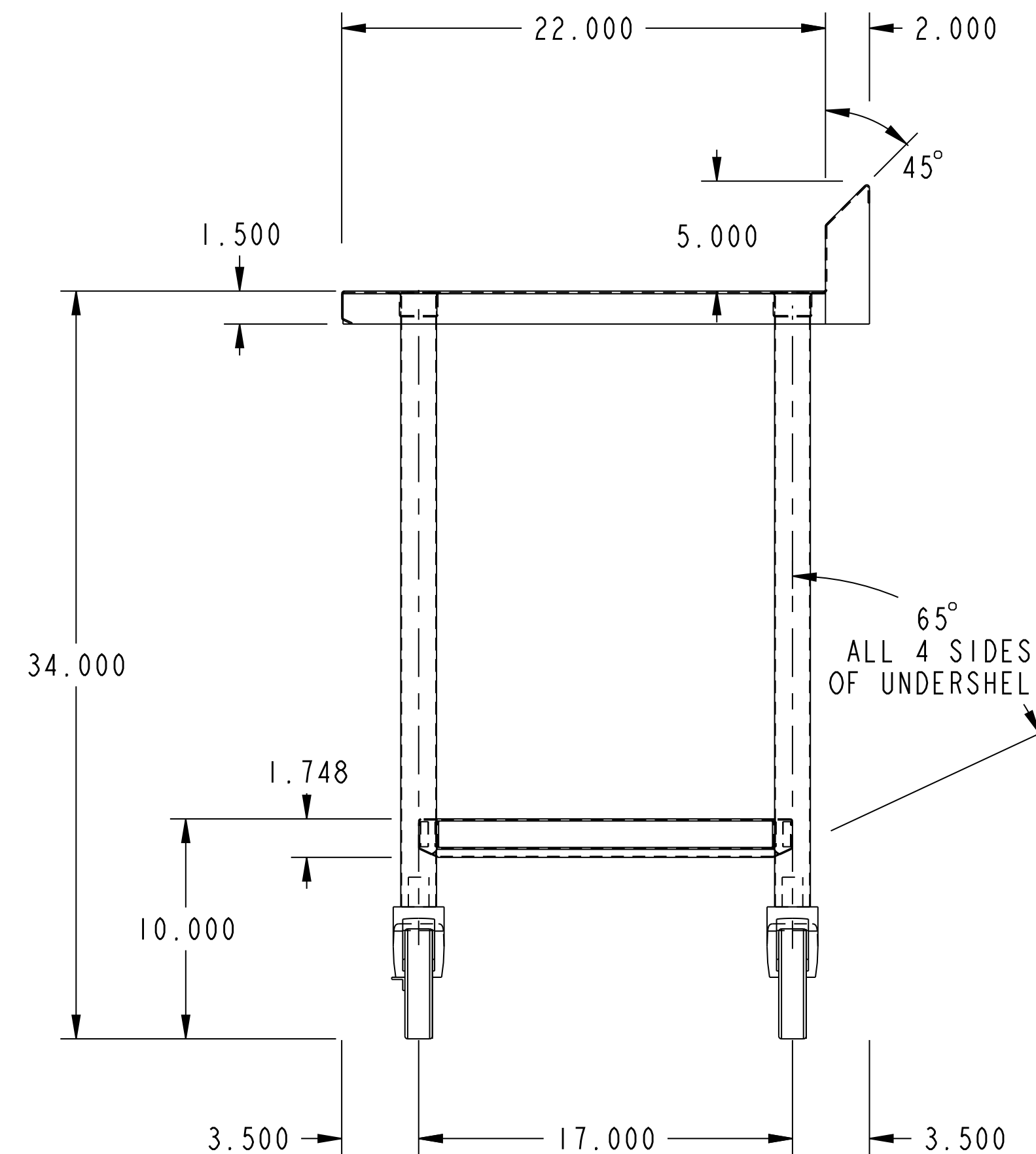
- TOP: CONSTRUCTED OF 16 GA. S\*\*\*S S/S. ALL WELDED CONSTRUCTION
- REINFORCING: STD-H-CANNEL FASTENED TO UNDERSIDE OF TOP
- UNDERSHELF: CONSTRUCTED OF 18 GA. S\*\*\*S S/S. ALL WELDED CONSTRUCTION
- CASTERS: 5" SWIVEL CASTERS (2) WITH LOCKS. CASTER CAPACITY: 300 LBS EACH.
- NOTES : ALL S/S TO BE POLISHED TO NO. 3 FINISH  
ALL UNEXPOSED WELDS TO BE COVERED W/ ALUMINUM PAINT  
ALL METAL EDGES TO BE FILED SMOOTH. BURRS OR SHARP CORNERS.



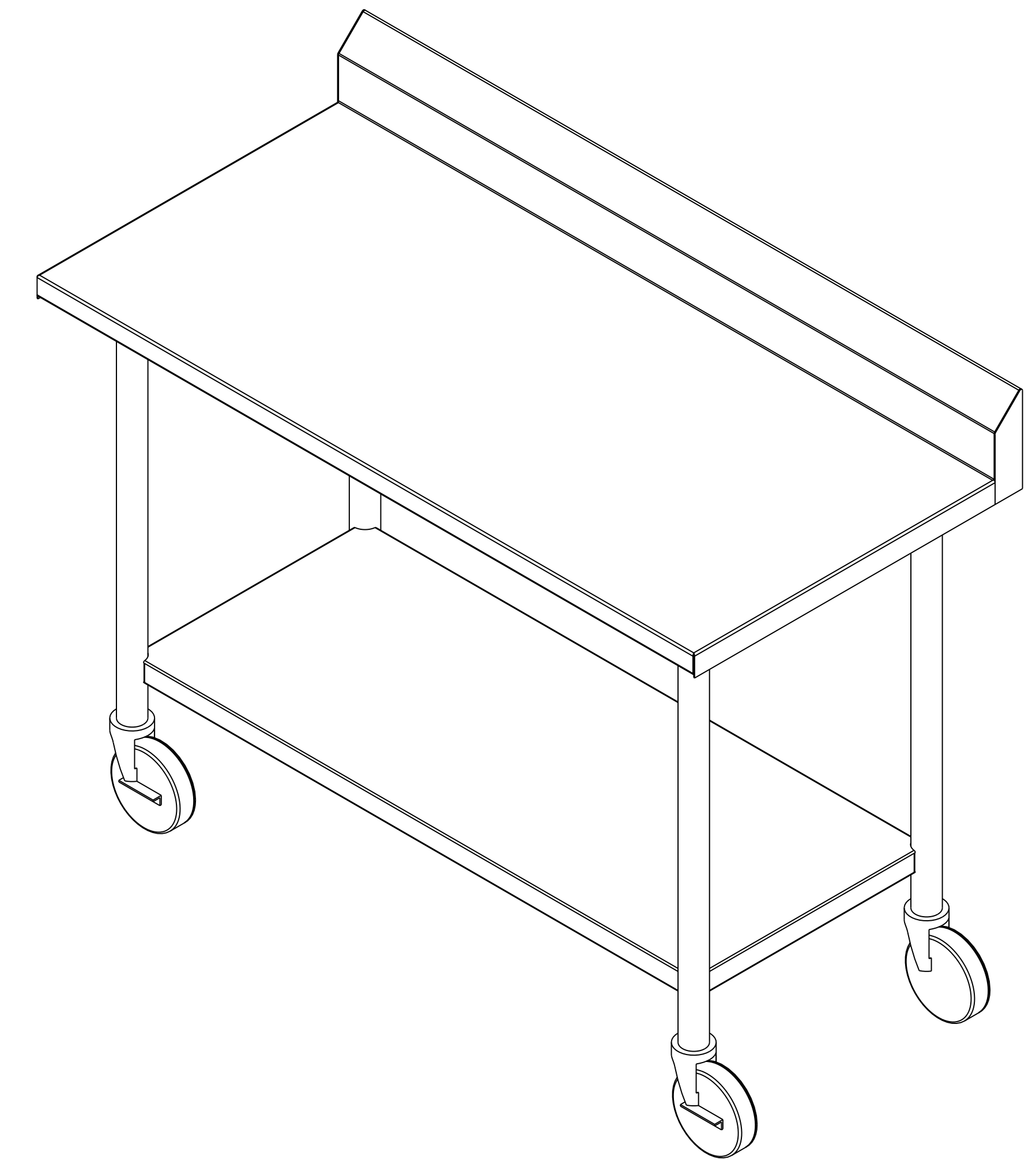
PLAN VIEW



ELEVATION



SIDE VIEW



NO.	DATE	REVISIONS	BY
ASSEM		D724-73	



PRO