

# HOW TO CLEAN WITH OMNICLEAN



# OmniClean SPOT KIT



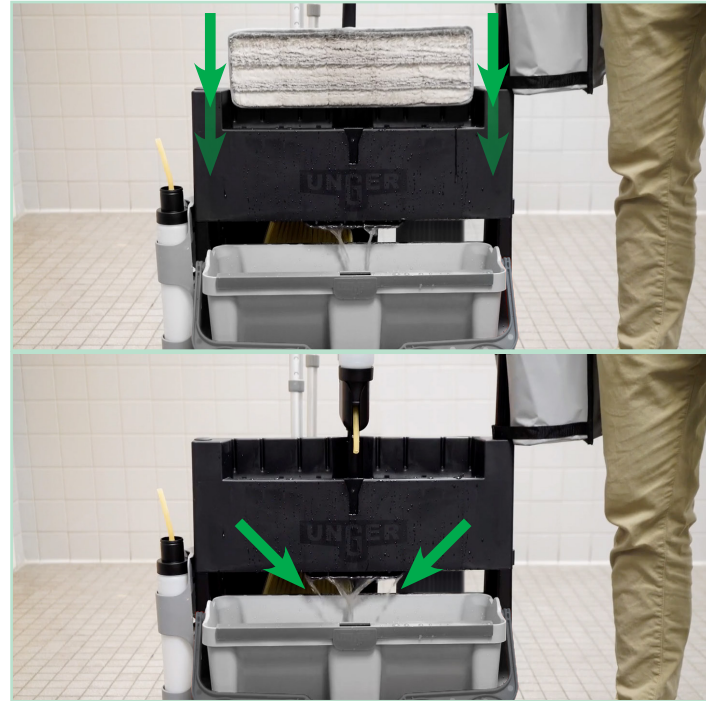
Quality Tools for Smart Cleaning™

Step 5



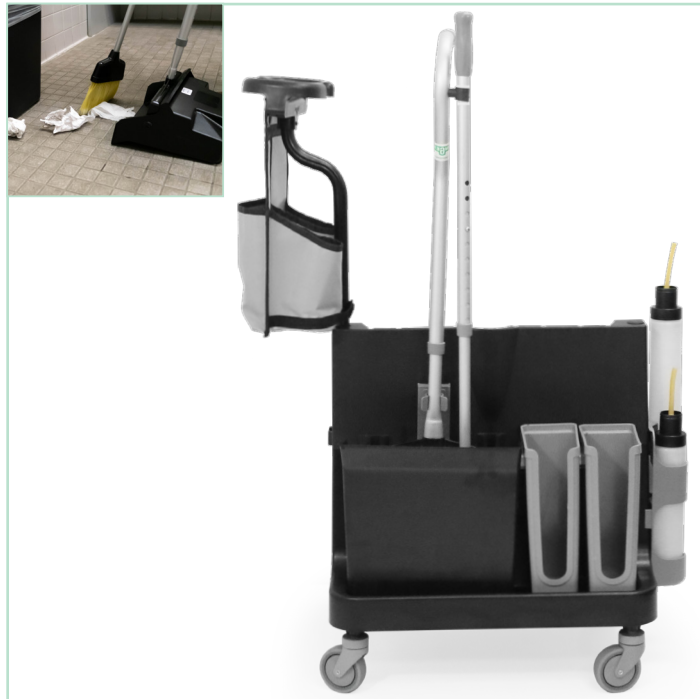
When mop pad is dirty, insert into scrub board bucket and scrub debris off pad.

Step 6



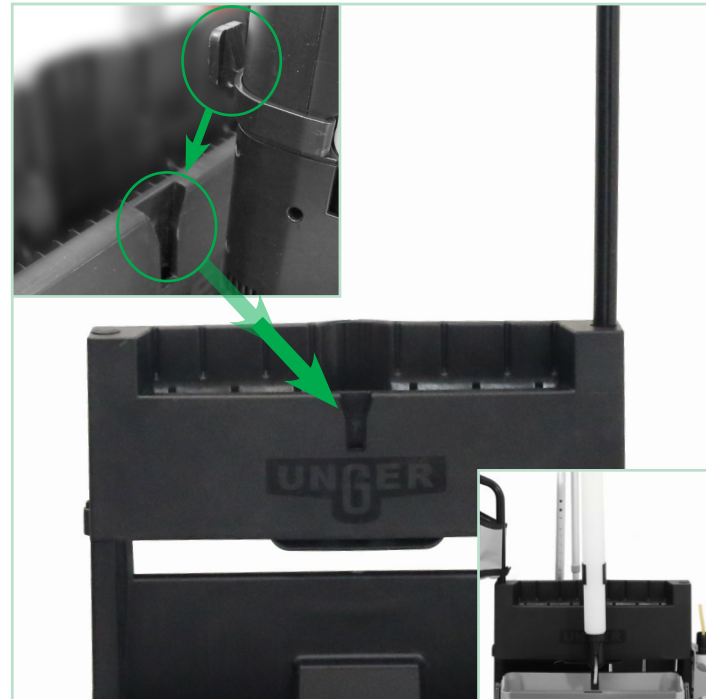
Insert mop into wringer, wring mop 2x making sure to completely pull mop out of wringer each time.

Step 7



Use accessories as needed.

Step 8



When mopping is complete, empty rinse bucket into utility sink and hang Excella into storage clip.



View our OmniClean Video Here



## Unger OmniClean Spot Kit

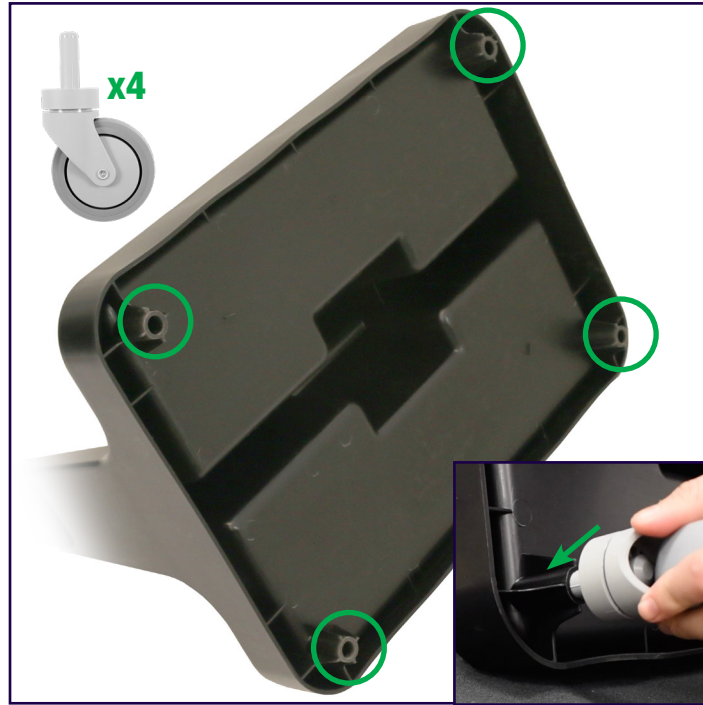
PART NO.: CLSPK CASE QTY.: 1

- Offset Pole with Actuator
- Small Bottle 0.5L
- Large Bottle 1L
- Pad Holder
- Microfiber Pads (2)
- DustPan Telescopic gray
- SmartColor Rectangular Labels (2)
- Carriage with Wringer
- Gray Bucket
- Gray Scrub Board
- Offset Tube Carriage Handle
- Gray Bucket Handle
- Dual Bottle Holder Clip
- DustPan Holder Clip
- Storage Bins (2)
- Storage Caddy
- Excella Clip
- Casters (4)

# ASSEMBLY

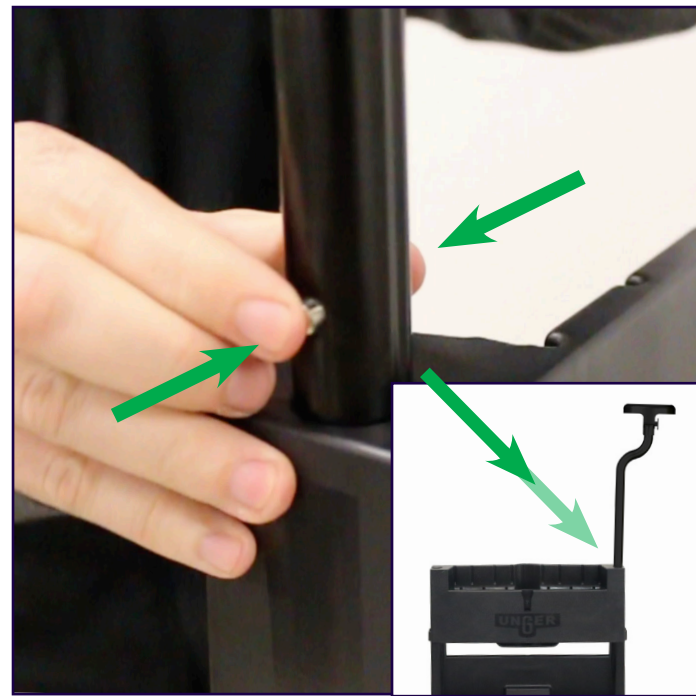


## Caster Installation



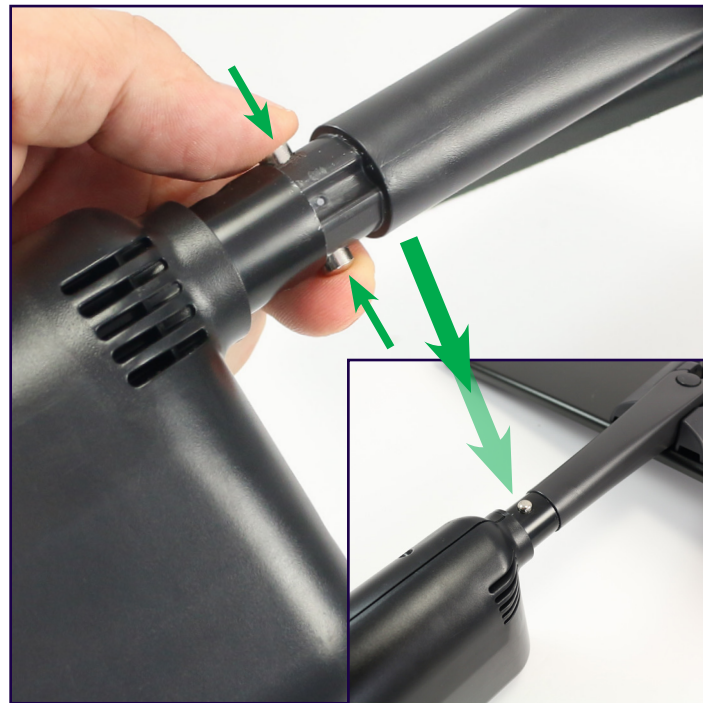
Push casters firmly into the base of the carriage.

## Handle Installation



On the handle, press metal pins and guide into the carriage base until you hear a click.

## Mop Head Installation



Press metal pins on mop pad holder into the base of the Excella pole until you hear a click.

## Accessory Installation



Attach accessory clips and store tools; place dustpan as pictured.

# HOW TO CLEAN WITH OMNICLEAN



## Step 1



Fill scrub board bucket with water to the fill line and place bucket on carriage.  
*(Scrub board bucket is always on Unger logo side)*

## Step 2



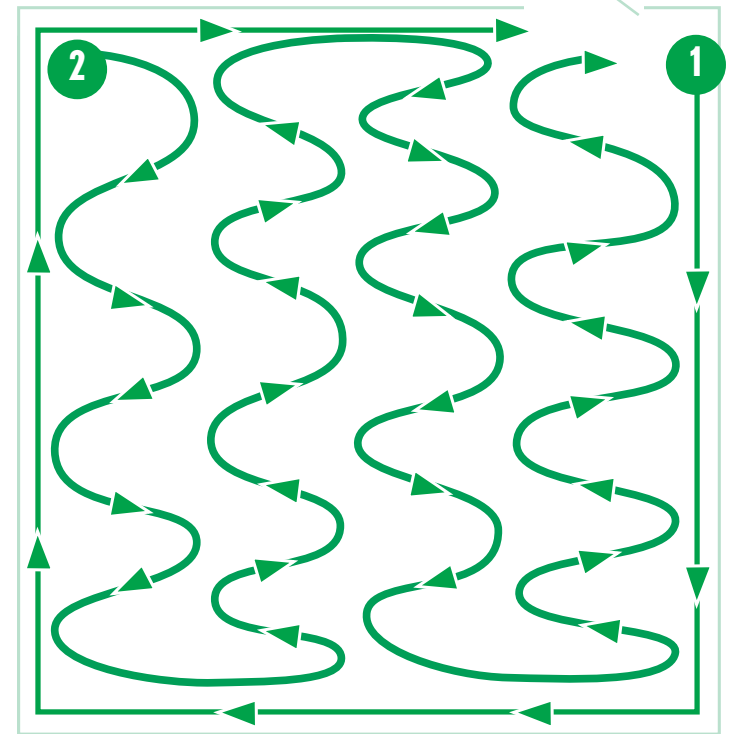
Adjust the height of Excella pole to chin height; tighten the locking collar.

## Step 3



Dispense cleaning agent.

## Step 4



Mop with "S" motion.