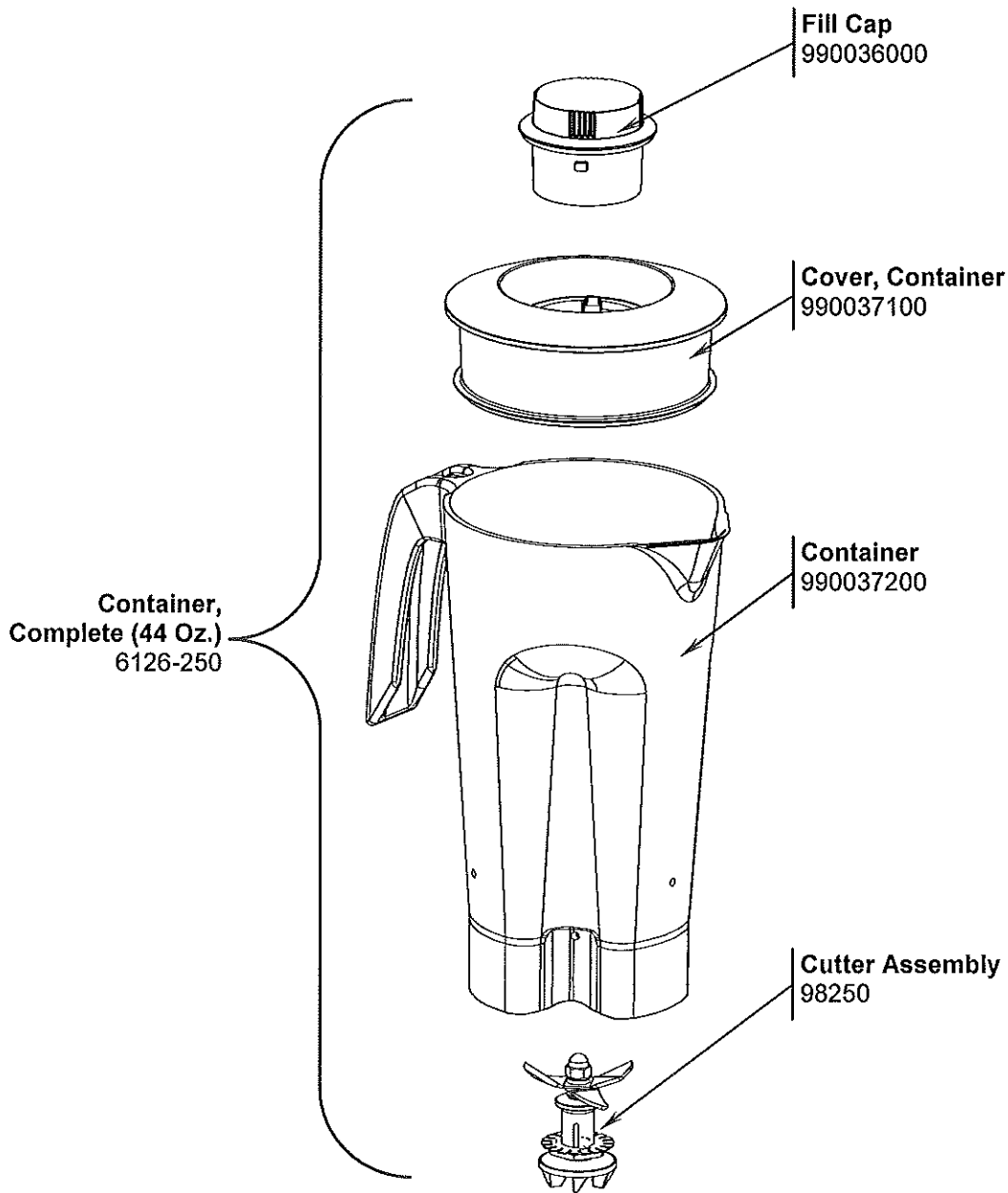



Parts and Accessories Diagram Model HBB250R

PROPRIETARY RIGHTS NOTICE This document and all information contained within it is the property of Hamilton Beach Brands, Inc. (HBB). It is confidential and proprietary and has been provided to you for a limited purpose. It must be returned or destroyed upon request. Disclosure, reproduction or use of this document and any information contained within it, in full or in part, for any purpose is forbidden without the prior written consent of HBB. No photographs may be taken of any article fabricated or assembled from this document without the prior written consent of HBB.

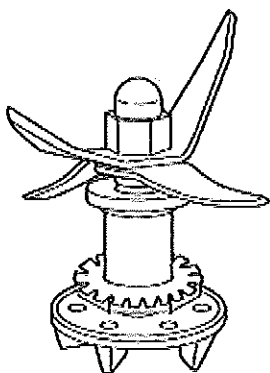


 <p>Hamilton Beach 4421 Waterfront Drive Glen Allen, VA 23060</p>	Revision Description:		PRODUCTION RELEASE (Replaces 540006300)				
	Request Number:	DOC4186	Revision Date:	10/22/13	Approved by:	DOC4186	
	Issue Code(s):	L	Page:	2 of 5	Document #:	540035000	Rev:

Parts and Accessories Diagram Model HBB250R

PROPRIETARY RIGHTS NOTICE This document and all information contained within it is the property of Hamilton Beach Brands, Inc. (HBB). It is confidential and proprietary and has been provided to you for a limited purpose. It must be returned or destroyed upon request. Disclosure, reproduction or use of this document and any information contained within it, in full or in part, for any purpose is forbidden without the prior written consent of HBB. No photographs may be taken of any article fabricated or assembled from this document without the prior written consent of HBB.

Cutter Assembly Replacement Instructions



Cutter Repair Kit
for Rio Blenders



⚠ WARNING

Cut Hazard
Handle cutter
assembly with
care.
Failure to follow
these instructions
can result in cuts
or other injuries.

Removing the
old cutter assembly

Hold the blades with a
cloth. Unscrew the clutch
counterclockwise.

Remove the clutch and
felt washer.

Remove the shaft and
blade assembly

Use a flathead screw-
driver to flatten the tabs
on the tab washer.

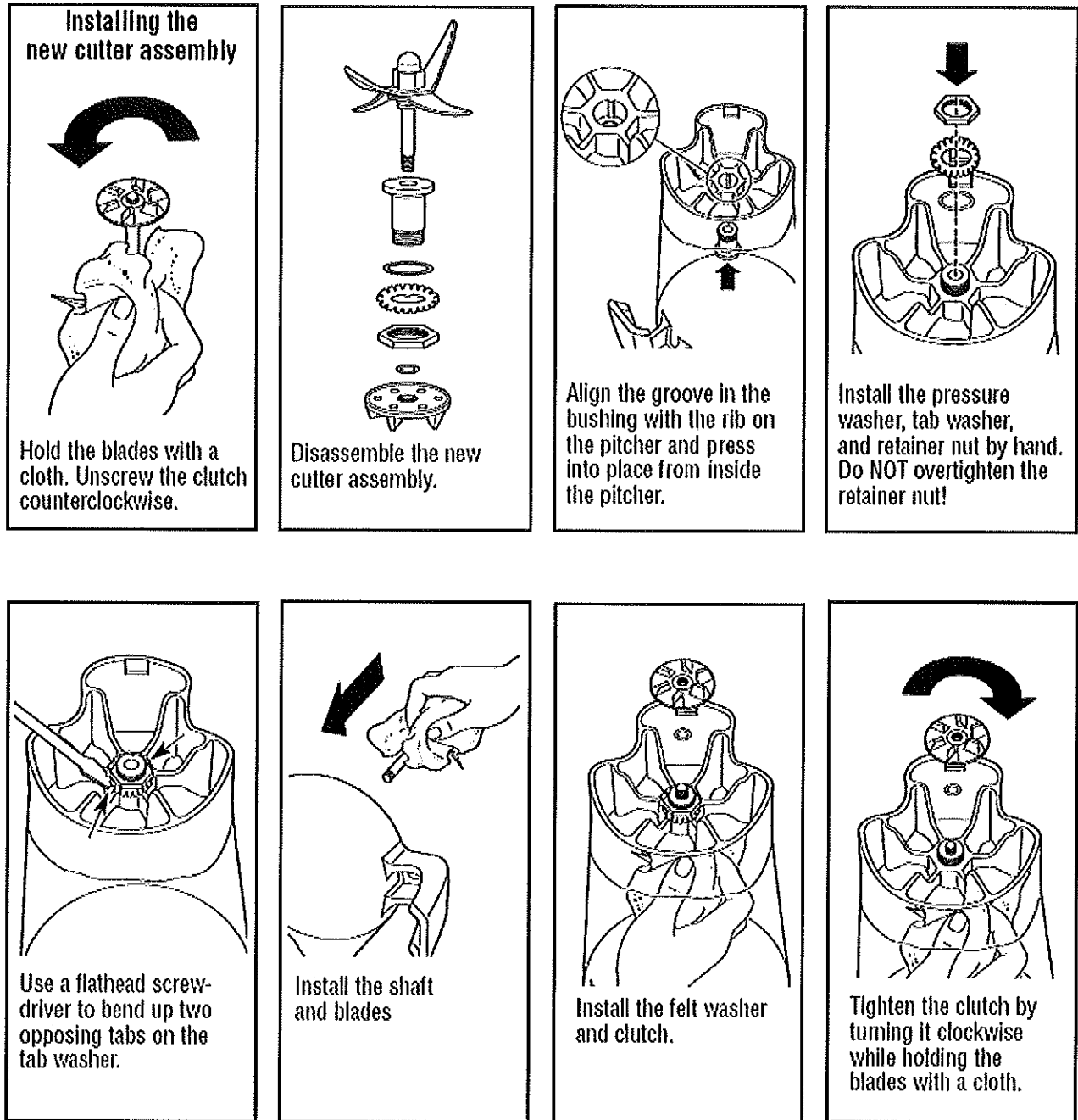
Remove the nut by
turning counterclockwise
by hand. Then remove
the tab washer and
pressure washer.

Remove bushing.

 4421 Waterfront Drive Glen Allen, VA 23060	Revision Description:	PRODUCTION RELEASE (Replaces 540006300)				
	Request Number:	DOC4186	Revision Date:	10/22/13	Approved by:	DOC4186
	Issue Code(s):	L	Page:	4 of 5	Document #:	540035000
					Rev:	A

Parts and Accessories Diagram Model HBB250R

PROPRIETARY RIGHTS NOTICE This document and all information contained within it is the property of Hamilton Beach Brands, Inc. (HBB). It is confidential and proprietary and has been provided to you for a limited purpose. It must be returned or destroyed upon request. Disclosure, reproduction or use of this document and any information contained within it, in full or in part, for any purpose is forbidden without the prior written consent of HBB. No photographs may be taken of any article fabricated or assembled from this document without the prior written consent of HBB.



<p>Hamilton Beach 4421 Waterfront Drive Glen Allen, VA 23060</p>	Revision Description:	PRODUCTION RELEASE (Replaces 540006300)				
	Request Number:	DOC4186	Revision Date:	10/22/13	Approved by:	DOC4186
	Issue Code(s):	L	Page:	5 of 5	Document #:	540035000
					Rev:	A