

# CWTF15-3, PF (3 Lower Left Warmers)

17.3" x 21.4" x 16.4"  
(43.9cm x 54.4cm x 41.7cm)

- All stainless steel construction
- Hot water faucet and pourover feature
- SplashGard® funnel deflects hot liquids away from the hand



Agency:



## Specifications

**Product #:** 12950.0298

**Warmers:** Three Lower

**Water Access:** Plumbed

**Finish:** Stainless

**Funnel:** Black Plastic

**Faucet:** Upper

## Additional Features

Low Profile

Pourover Option

## Electrical & Capacity

| Volts | Amps | Watts | Cord Attached | Plug Type  | 8oz cups/hr<br>236ml cups/hr | Input H <sub>2</sub> O Temp. | Phase | # Wires plus Ground | Hertz |
|-------|------|-------|---------------|------------|------------------------------|------------------------------|-------|---------------------|-------|
| 120   | 13.9 | 1670  | Yes           | NEMA 5-15P | 62                           | 60°F (15.5°C)                | 1     | 2                   | 60    |

## Plumbing Requirements

| PSI   | kPa     | Fitting Supplied        | Water Flow Required (GPM) |
|-------|---------|-------------------------|---------------------------|
| 20-90 | 138-621 | 1/4" Male Flare Fitting | -                         |

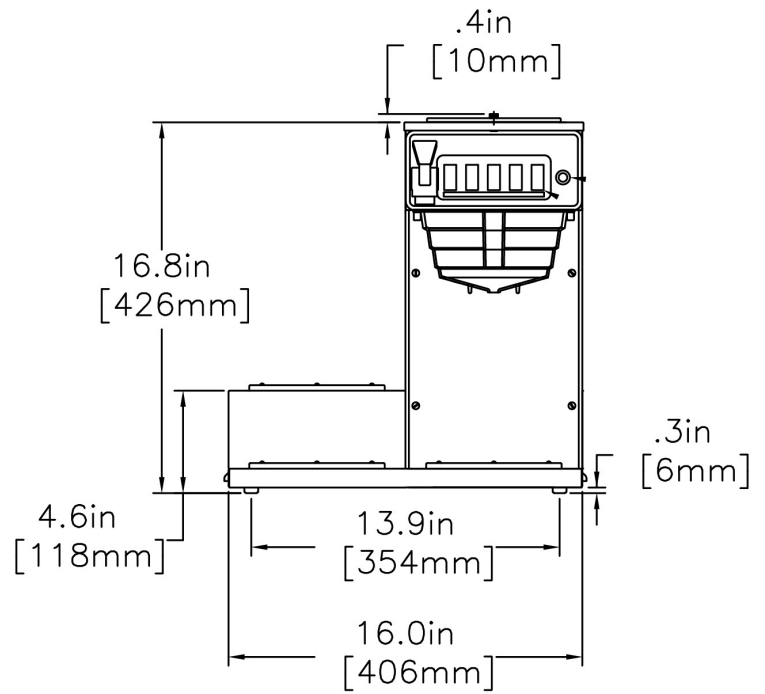
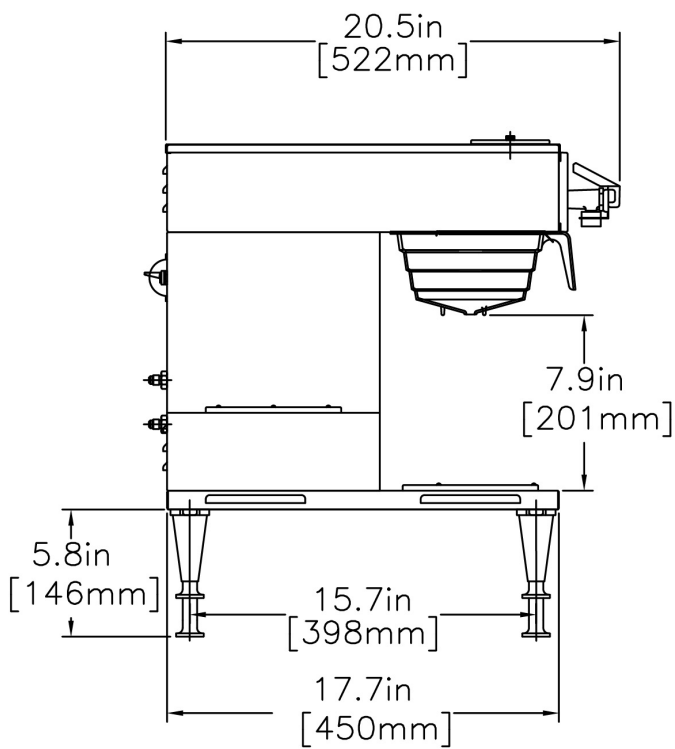
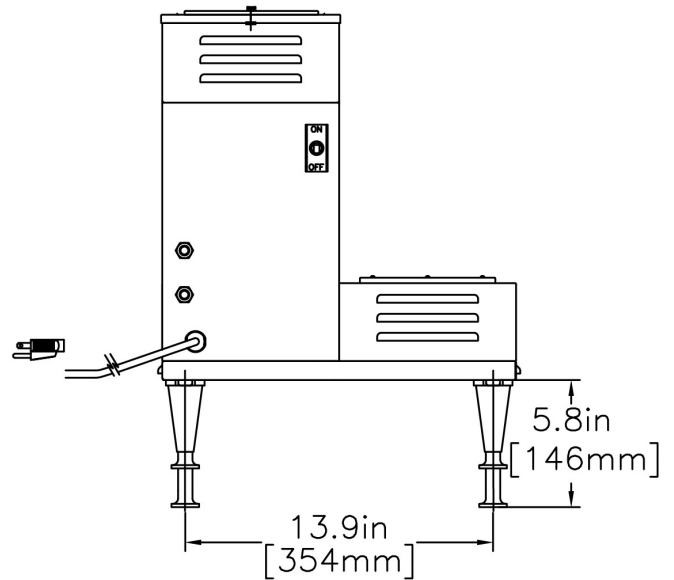
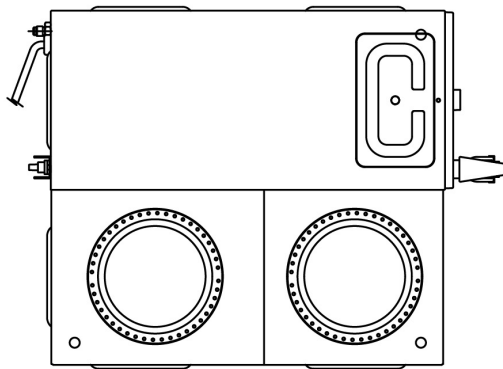
## CAD Drawings

| 2D | Revit | KLC |
|----|-------|-----|
| ●  |       |     |



BUNN® reserves the right to change specifications and product design without notice. Such revisions do not entitle the buyer to corresponding changes, improvements, additions or replacements for previously purchased equipment. For most current specifications and other info visit [bunn.com](http://bunn.com).

Created on:  
04/11/2019



| Unit    |          |          |          | Shipping |          |          |            |                       |
|---------|----------|----------|----------|----------|----------|----------|------------|-----------------------|
|         | Width    | Height   | Depth    | Width    | Height   | Depth    | Weight     | Volume                |
| English | 16.4 in. | 17.3 in. | 21.4 in. | 19.9 in. | 22.4 in. | 25.8 in. | 39.400 lbs | 5.939 ft <sup>3</sup> |
| Metric  | 41.7 cm  | 43.9 cm  | 54.4 cm  | 50.5 cm  | 56.9 cm  | 65.5 cm  | 17.872 kgs | 0.168 m <sup>3</sup>  |



BUNN® reserves the right to change specifications and product design without notice. Such revisions do not entitle the buyer to corresponding changes, improvements, additions or replacements for previously purchased equipment. For most current specifications and other info visit [bunn.com](http://bunn.com).

Created on:  
04/11/2019

Related Products & Accessories:CWTF15-3, PF (3 Lower Left Warmers)(12950.0298)



FILTERS,REGULAR1M  
500/2 50/CL

---

Product #: 20115.0000



FUNNEL W/DECALS,  
BLACK PLASTIC

---

Product #: 20583.0003



WATER FILTER  
SYSTEM,EQ-17-TL

---

Product #: 30200.1000



WATER FILTER,IN LINE  
ED-17-TL

---

Product #: 30201.1001



Serving & Holding Options: CWTF15-3, PF (3 Lower Left Warmers)(12950.0298)

|  |  |   |  |   |
|--|--|---|--|---|
|  <p>EASY POUR®,(BLK) 1/CS</p> <p>Product #:06100.0101</p>          |  <p>EASY POUR®,(BLK) 2/CS</p> <p>Product #:06100.0102</p>           |  <p>EASY POUR®,(BLK) 3/CS</p> <p>Product #:06100.0103</p>            |  <p>EASY POUR®,(BLK) 6/CS</p> <p>Product #:06100.0106</p>          |  <p>EASY POUR®,(BLK) 12/CS</p> <p>Product #:06100.0112</p>         |
|  <p>EASY POUR®,(BLK) 24/CS</p> <p>Product #:06100.0124</p>         |  <p>EASY POUR®,(BLK) 6-1/CS</p> <p>Product #:06100.0156</p>         |  <p>EASY POUR®,(ORN) 1/CS</p> <p>Product #:06101.0101</p>            |  <p>EASY POUR®,(ORN) 2/CS</p> <p>Product #:06101.0102</p>          |  <p>EASY POUR®,(ORN) 3/CS</p> <p>Product #:06101.0103</p>          |
|  <p>EASY POUR®,(ORN) 6/CS</p> <p>Product #:06101.0106</p>         |  <p>EASY POUR®,(ORN) 12/CS</p> <p>Product #:06101.0112</p>         |  <p>EASY POUR®,(ORN) 24/CS</p> <p>Product #:06101.0124</p>          |  <p>DECANTER, GLASS-BLK 12C 24/CS</p> <p>Product #:42400.0024</p> |  <p>DECANTER, GLASS-BLK 12CUP 1PK</p> <p>Product #:42400.0101</p> |
|  <p>DECANTER, GLASS-BLK 12C 3/CS</p> <p>Product #:42400.0103</p> |  <p>DECANTER, GLASS-ORN 12C 24/CS</p> <p>Product #:42401.0024</p> |  <p>DECANTER, GLASS-ORN 12 CUP 1PK</p> <p>Product #:42401.0101</p> |  <p>DECANTER, GLASS-ORN 12C 3/CS</p> <p>Product #:42401.0103</p> |   |

