



JADE RANGE

ITEM #: _____

QTY: _____

JOB NAME: _____

TITAN Six Open Burner Range



JTRH-6-36

Model No.	Description
<input type="checkbox"/> JTRH-6-36	Six open burners -w/standard oven
<input type="checkbox"/> JTRH-6-36C	Six open burners -w/convection oven

STANDARD FEATURES

- Three 12" x 28" cast iron top grates
- Six 30,000 BTU/hr. cast iron open burners
- New!* ■ Variable size multi-point gas connection - see utility information for details
- One stainless steel pilot per burner
- 14 Gauge all welded body construction
- #304 Stainless steel oven interior (bottom and sides removable without tools on standard oven)
- Two chrome plated oven racks (wires curled and welded around main frame with no sharp ends)
- Oven controls located in cool zone
- Stainless steel gas tubing throughout
- #304 Stainless steel front and stub back
- #304 Stainless steel adjustable plate shelf
- Stainless steel adjustable 6" legs

OPTIONS

NOTE: When stainless steel specified, Jade Range uses heavy gauge #304 stainless steel

- New!* ☐ Polished steel top grate in lieu of cast iron
- ☐ Stainless steel high riser
- ☐ Stainless steel double high riser
- ☐ Stainless steel high shelf
- ☐ Stainless steel double high shelf
- New!* ☐ Stainless steel tubular high shelf
- New!* ☐ Stainless steel tubular double high shelf
- ☐ Stainless steel sides
- ☐ Common plate shelf (except fryers) with Item(s) Model(s) _____
- ☐ Cap and cover manifold. Left ☐ Right ☐

ACCESSORIES

- ☐ 6" Casters, front two locking (5" diameter wheel)
- ☐ 36" Flex hose with quick disconnect (3/4" connection)
- ☐ 48" Flex hose with quick disconnect (3/4" connection)
- ☐ 1" Gas pressure regulator (specify gas type)
- ☐ 1 1/4" Gas pressure regulator (specify gas type)
- ☐ Additional oven rack (two supplied with range)



Standard Stainless Steel Adjustable Plate Shelf



Standard Stainless Steel Oven Interior



JADE RANGE
JADE REFRIGERATION
UTILITY REFRIGERATOR

7355 East Slauson Avenue • Commerce, CA 90040
 (323) 728-5700 (800) 884-5233 FAX (323) 728-2318

7/02 PRINTED IN U.S.A.

NOTE: IN LINE WITH ITS POLICY TO CONTINUALLY IMPROVE ITS PRODUCTS, JADE RANGE, INC. RESERVES THE RIGHT TO CHANGE MATERIALS AND SPECIFICATIONS WITHOUT NOTICE.





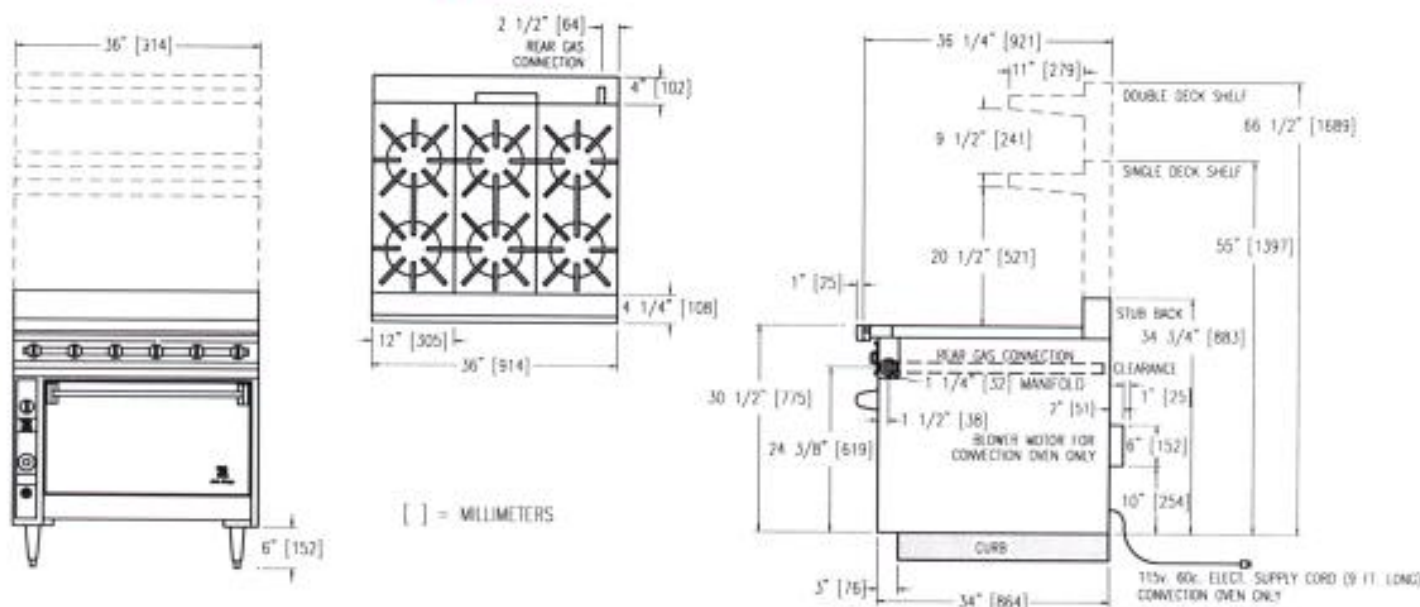
JADE RANGE

ITEM #: _____

QTY: _____

JOB NAME: _____

TITAN Six Open Burner Range



MODEL	BTU's	WIDTH	DEPTH	HEIGHT	APPX. SHP. WT.
JTRH-6-36	215,000	36"	36 1/4"	SEE DRAWING	690 lbs
JTRH-6-36C	210,000	36"	38 1/4"		740 lbs

UTILITY INFORMATION - GAS

- Ranges are supplied with 1 1/4" front manifold connection and a 1" or 3/4" capped rear manifold connection. For rear manifold connection, remove cap. Ranges are supplied with 3/4" gas pressure regulator. For 1 1/4" or 1" gas pressure regulator, see accessories. (Specify required front manifold cap and cover when ordering)
- Required operating pressure:
Natural Gas 5" W.C.
Propane Gas 10" W.C.

Note: This unit must be connected with an adequately sized pressure regulator (see accessories)

SPECIFICATIONS

Heavy duty open burner range, with oven below. To be Model No. JTRH_____, manufactured by Jade Range. Provided with three 12" x 28" heavy duty cast iron top grates. To have six 30,000 BTU/hr. cast iron open top burners controlled by infinite gas valves. One spill pan below all burners. To have 14 gauge all welded body with #304 stainless steel front. Sides, back and bottom to be finished with heat resistant black paint. Stainless steel plate shelf to be adjustable. All gas tubing to be stainless steel throughout. To have 6" stainless steel adjustable legs.

NOTE: Specify type of gas when ordering

ELECTRIC - CONVECTION OVEN ONLY

- Power Supply: 115/60/1 - 6 ft. cord with 3 prong plug
- Total maximum amps 4.0
- Electronic Spark Ignitor: activated by power switch, ignites standing pilot
- Power Switch: controls power to oven
- Fan Switch: three positions, on for normal operation, on for quick cool down, off

SPECIFY BASE

☐ STANDARD OVEN

To have conventional oven base with #304 stainless steel lining. Oven sides and bottom to be removable without tools. Provide with two oven racks, with wires curled around main frame and chrome plated. Thermostat to adjust from 150° to 550° F to have 35,000 BTU/hr. burner. Oven interior dimensions 28 1/4" w x 14" h x 27 3/4" d.

☐ CONVECTION OVEN

To have convection oven base with 14 gauge #304 stainless steel interior. Provide with two oven racks, with wires curled around main frame and chrome plated. Thermostat to adjust from 150° to 550° F. To have 30,000 BTU/hr. burner. Provide with 1/3 HP 115/60/1 blower motor. Oven interior dimensions: 28" w x 13 3/4" h x 24 1/2" d.



JADE RANGE
JADE REFRIGERATION
UTILITY REFRIGERATOR

7355 East Slauson Avenue • Commerce, CA 90040
(323) 728-5700 (800) 884-5233 FAX (323) 728-2318