



CATALOG OF REPLACEMENT PARTS



REVOLVING TRAY OVEN

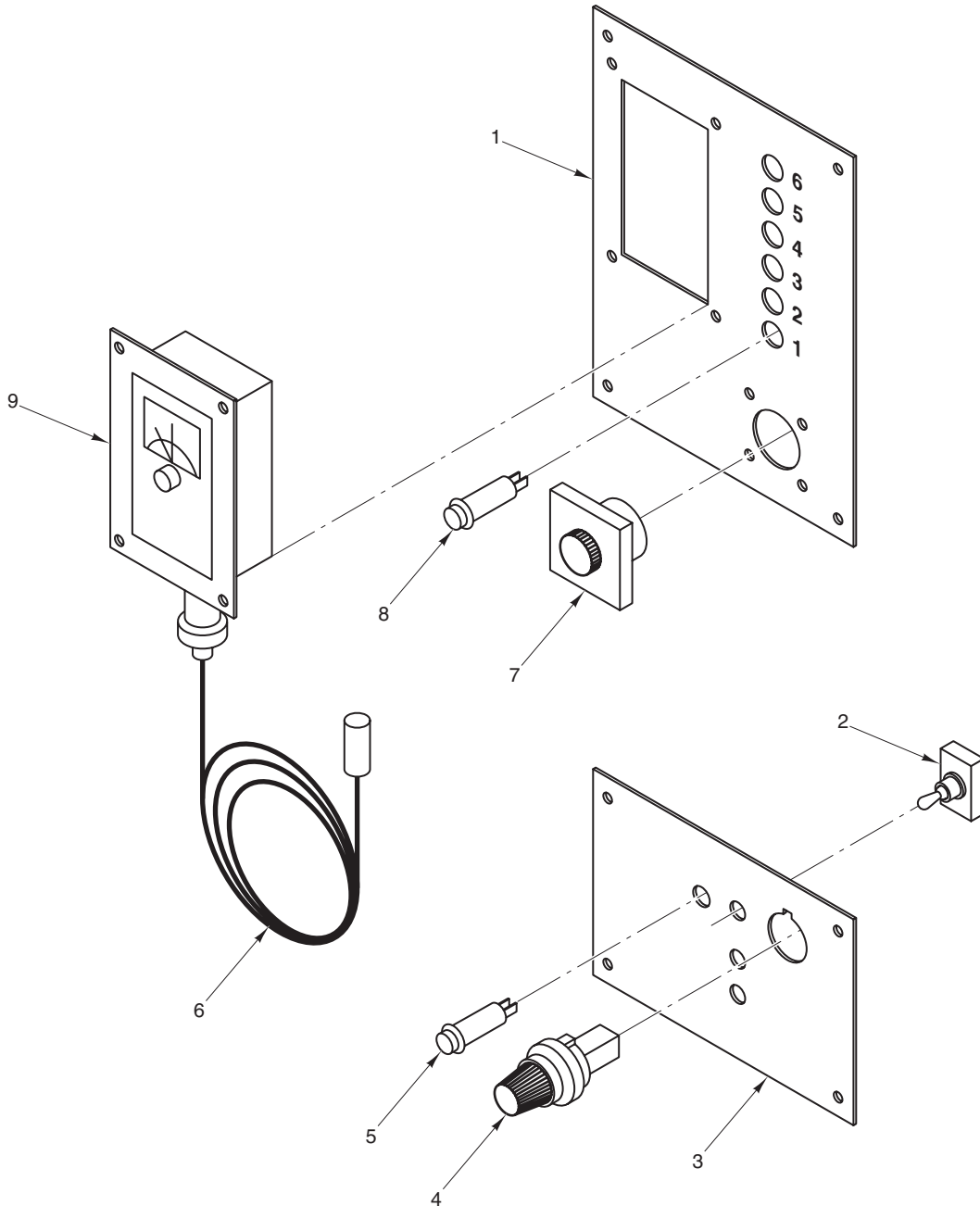
OV851G-M36	ML-132121
OV851G-M30	ML-132122
OV851G-M24	ML-132123
OV851G-M18	ML-132124

PREVIOUS MODELS COVERED IN THIS CATALOG

OV850G	4-TRAY
OV850G	5-TRAY
OV850G	6-TRAY

Table of Contents

Page	Description
3	Control Panel (OV850G)
5	Control Panel (OV851G)
7	Control Modules and Service Entrances
8	Cabinet Assembly
11	Hood (OV850G)
13	Hood (OV851G)
15	Loading and Service Door
16	Main Drive Assembly
19	Main Drive Motor (OV850G)
21	Main Drive Motor (OV851G)
23	Purge Kit (OV851G)
25	Gas Supply Assembly
27	Burner Assembly
28	Blower Motor and Damper Motor (OV850G)

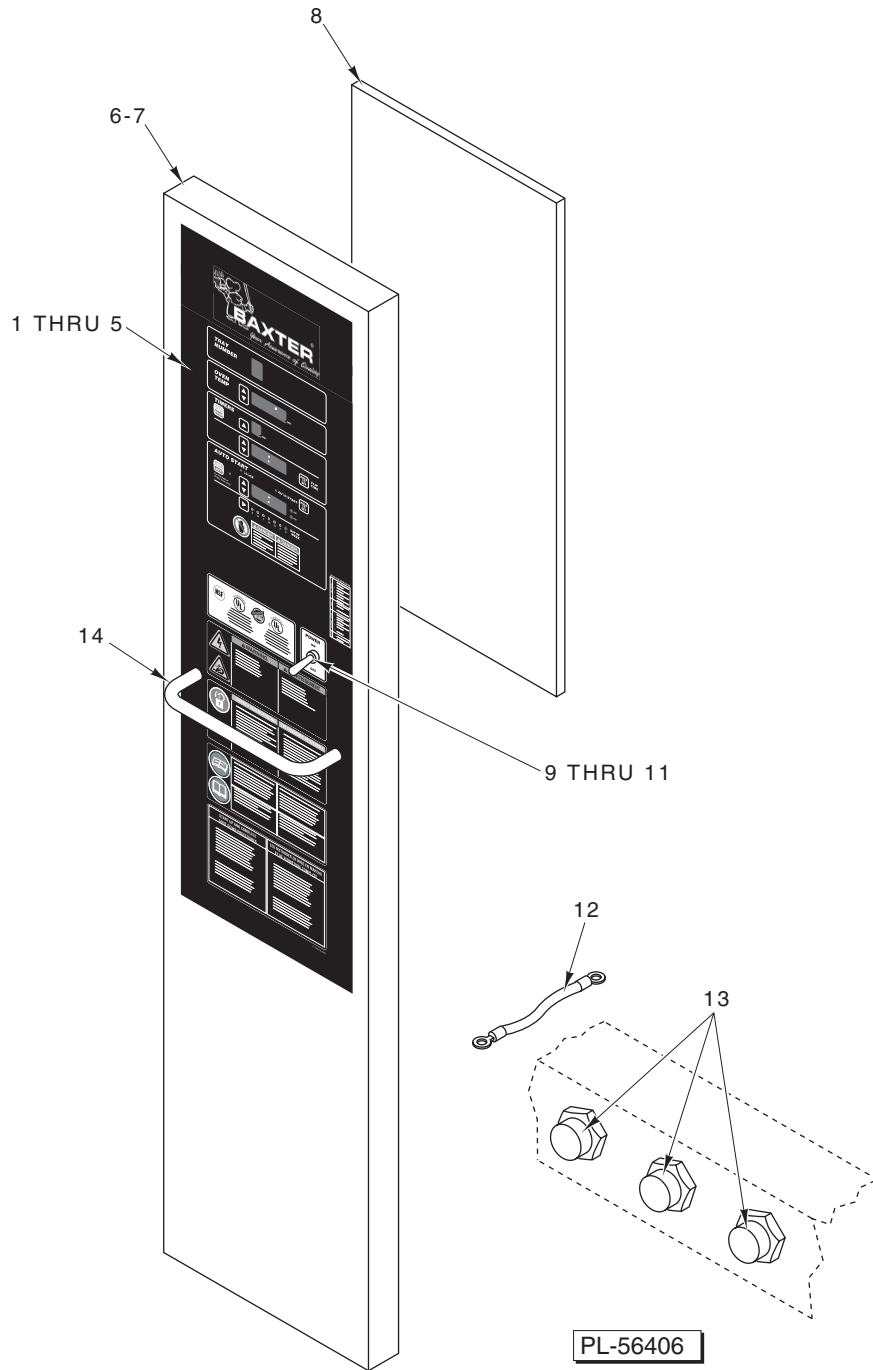


PL-56666

**CONTROL PANEL
(OV850G)**

ILLUS.	PART NO.	NAME OF PART	AMT.
1	01-10M890-00001	Panel – Instrument	1
2	01-1000V6-035-6	Switch – Toggle	1
3	01-10M750-00001	Plate – Name	1
4	01-1000V6-00046	Key Switch	1
5	01-1000V7-00008	Light – Red (24 V.)	3
6	01-1000V6-00036	Bulb – Thermostat Replacement	1
7	01-100V10-00062	Timer	1
8	01-1000V7-00009	Light – Amber (24 V.)	*
9	01-10M517-00001	Thermostat	1

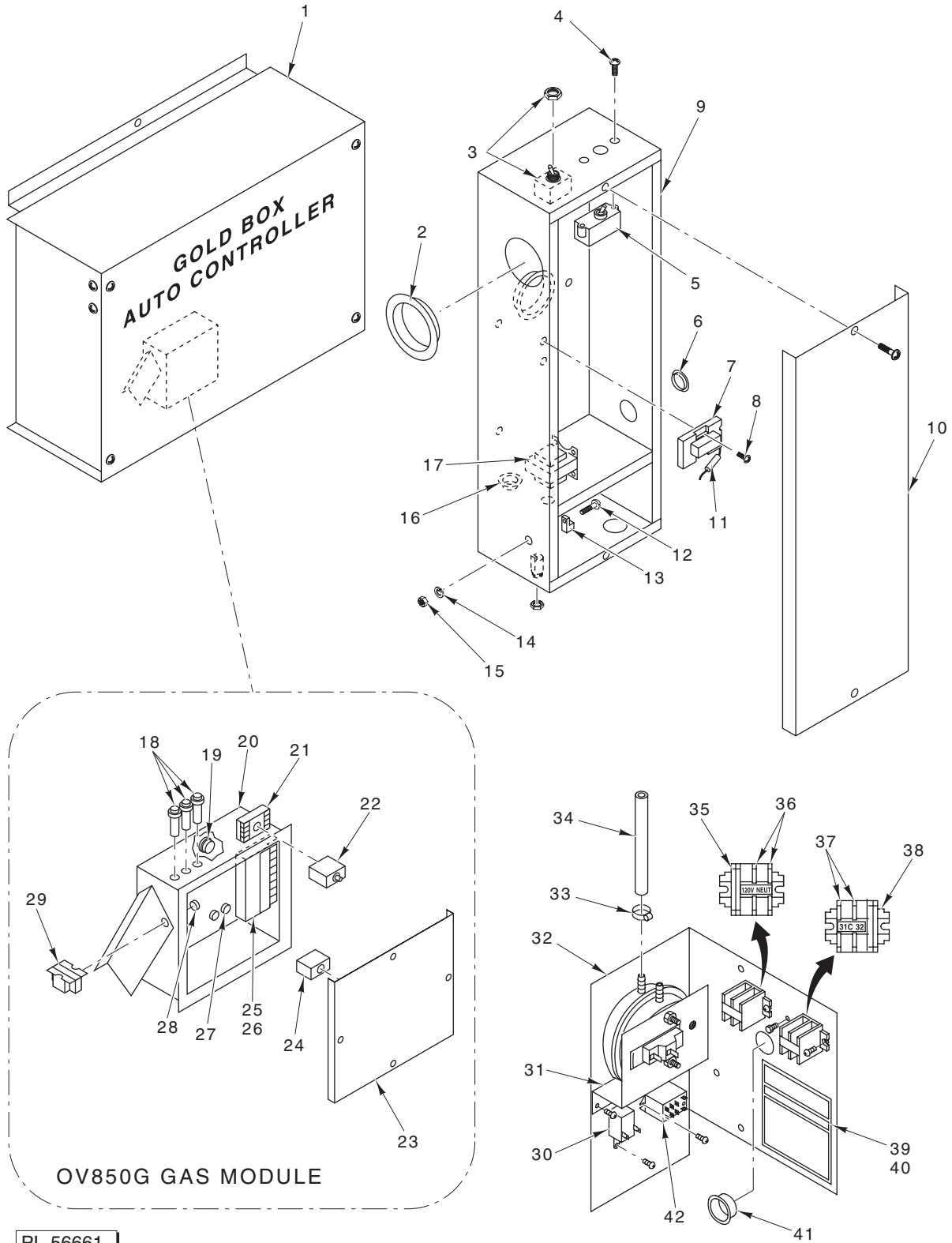
*Quantity Varies With Oven. Call Factory.



**CONTROL PANEL
(OV851G)**

**CONTROL PANEL
(OV851G)**

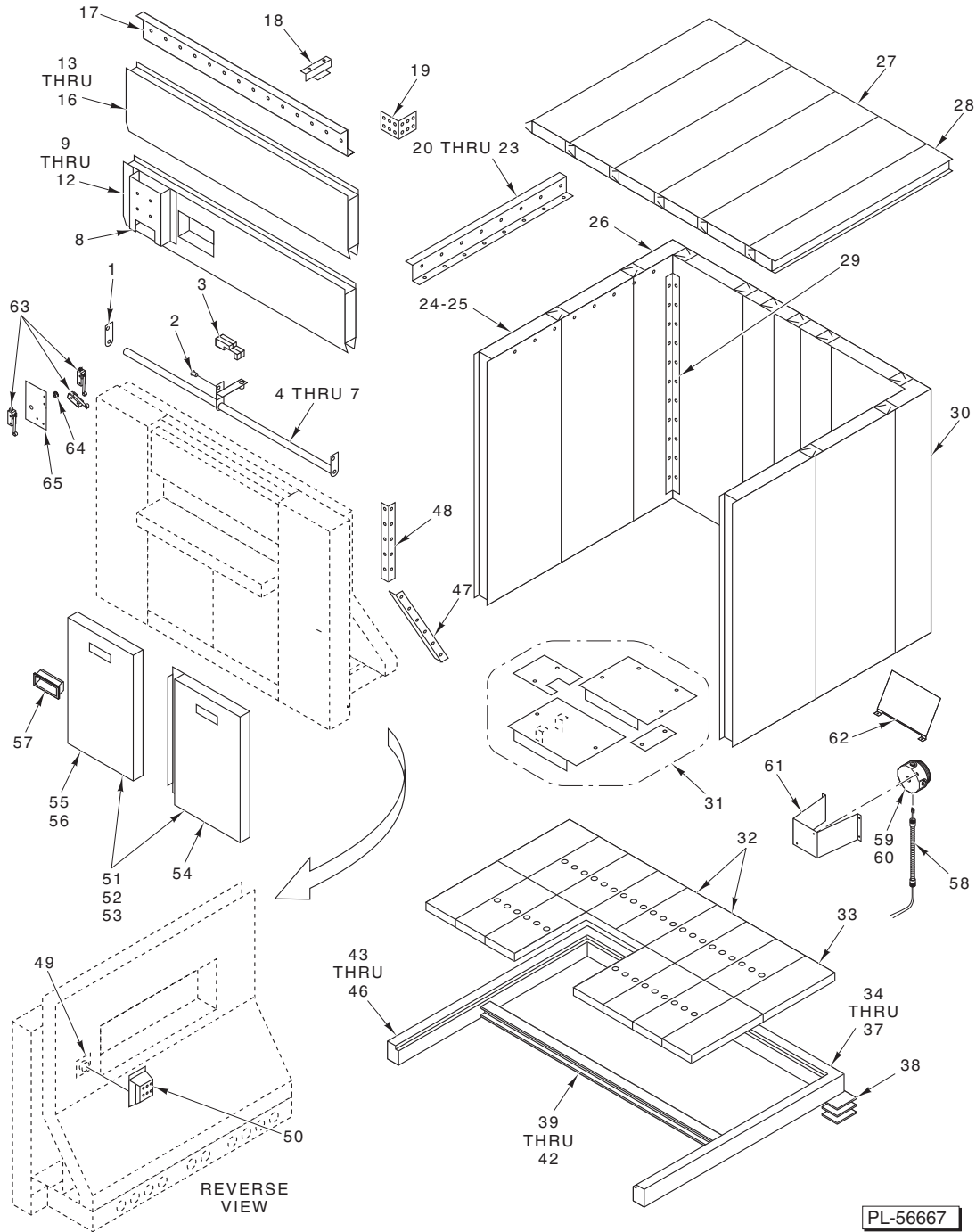
ILLUS. PL-56406	PART NO.	NAME OF PART	AMT.
1	01-100V16-0362A	Label – Control Panel (W/O Autostart)	1
2	01-100V16-0362B	Label – Control Panel (W/Autostart)	1
3	01-1M3109-00002	Board – PC (W/O Autostart)	1
4	01-1M3109-00003	Board – PC (W/Autostart)	1
5	01-1M3001-00002	Spacer – PC Board	12
6	01-1M3074-00003	Door Weldment (W/O Autostart)	1
7	01-1M3074-00002	Door Weldment (W/Autostart)	1
8	01-1M3083-00001	Cover – PC Control Board	1
9	01-1000V4-00019	Boot – Toggle Switch Seal	1
10	01-1M2283-00001	Guard – Toggle Switch	1
11	01-1000V6-0035J	Switch – Toggle	1
12	01-1M2777-00001	Strap – Ground	1
13	01-1000V6-00048	Button – Push (Green)	3
14	01-1M3010-00001	Handle – Door	1
	01-1M3103-00002	Door – Control (W/Autostart) (Incls. Items 2, 4, 5, & 7 thru 12)	1
	01-1M3103-00001	Door – Control (W/O Autostart) (Incls. Items 1, 3, 5, 6, & 8 thru 12)	1



CONTROL MODULES AND SERVICE ENTRANCES

CONTROL MODULES AND SERVICE ENTRANCES

ILLUS. PL-56661	PART NO.	NAME OF PART	AMT.
1	01-10M800-00001	Control Unit (Gold Box)	1
2	01-1000V5-00033	Bushing – Snap (2 In.)	2
3	01-1000V6-00045	Switch – Toggle 3PDT	1
4	-	Mach. Screw 6-32 x 1/4 Pan Hd.	2
5	01-1000V6-00052	Breaker – Circuit (3 Amp.)	1
6	01-100V15-00044	Cap – Finish (1 In.)	1
7	01-1000V6-00004	Relay DPDT (W/Auxillary Spot Connector)	2
8	-	Mach. Screw 10-32 x 1/4 Pan Hd.	4
9	01-10M789-00001	Junction Box Assy.	1
10	01-10M793-00001	Cover – Service	1
11	01-100V23-00R36	Resistor (25 Ohms)	1
12	-	Mach. Screw 1/4-20 x 1/2 Pan Hd.	1
13	01-1000V5-00037	Terminal Lug	1
14	-	Lockwasher 1/4 Internal Star	1
15	-	Nut 1/4-20 Hex	1
16	01-1000V5-00059	Bushing – Snap	1
17	01-100V10-00061	Transformer (120 V., 50/60 Hz.)	1
18	01-1000V7-00008	Light – Red (120 V.) (OV850G)	3
19	01-1000V5-00073	Bushing – Plastic (OV850G)	1
20	01-1M1633-00001	Box – Gas Control (OV850G)	1
21	01-1000V6-00021	Socket – Relay (OV850G)	1
22	01-1M3967-00001	Relay – Time Delay (OV850G)	1
23	01-1M1631-00001	Cover – Gas Control Box (OV850G)	1
24	01-1000V6-00067	Relay – Time Delay (OV850G)	1
25	01-1000V9-00129	Ignition Control – Electronic (OV850G)	1
26	01-1A1715-00001	Kit – Ignition Control (OV851G)	1
27	01-1000V5-00059	Bushing – Plastic (OV850G)	2
28	01-1000V5-00059	Bushing – Plastic (OV850G)	1
29	01-100V10-00061	Transformer (50/60 Hz., 120 V.) (OV850G/OV851G)	1
30	01-100V10-00034	Buzzer – Std. (Mini-120 VAC)	1
31	01-1M2824-00003	Switch – Pressure	1
32	01-1M3017-00001	Plate – Service Entrance (OV851G)	1
33	01-1000V1-00018	Clamp – Hose 1/4 I.D. x 7/16 O.D.	4
34	01-1A1023-00425	Tube – Black Neoprene 1/4 I.D. x 4.25 In.	2
35	01-1000V5-00106	End – Section	1
36	01-1000V5-00105	Terminal – Section	2
37	01-1000V5-00105	Terminal – Section	2
38	01-1000V5-00106	End – Section	1
39	01-100V16-00356	Label – Service Entrance (120 V.)	1
40	01-100V16-0356B	Label – Service Entrance (220 V.)	1
41	01-1000V5-00059	Bushing – Snap	1
42	01-1000V6-00070	Relay DPDT (1/4 Hp., 120 VAC)	1
	01-10M789-00001	Box – Service Entrance	1



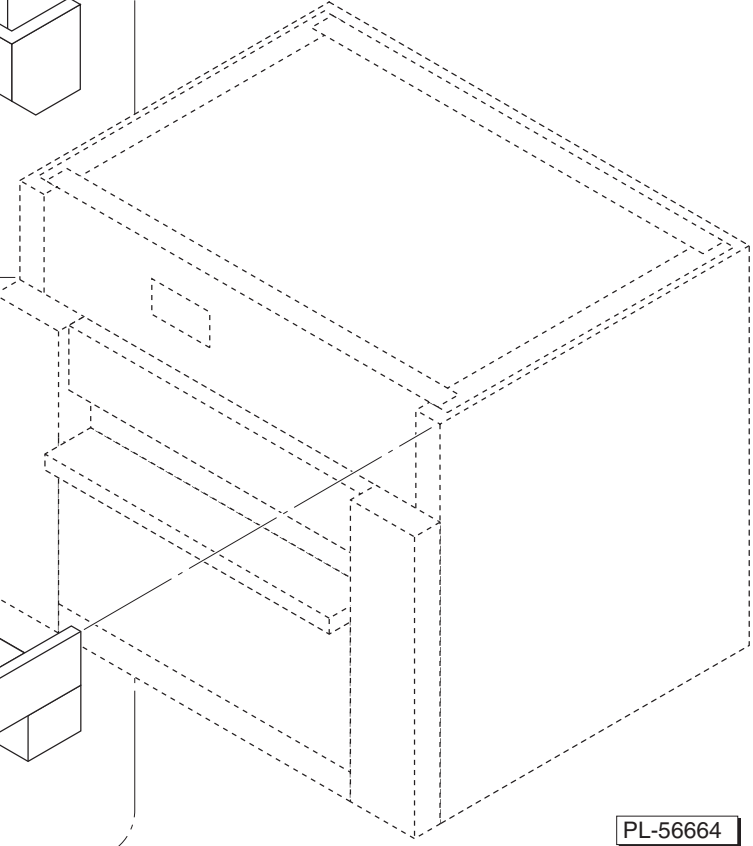
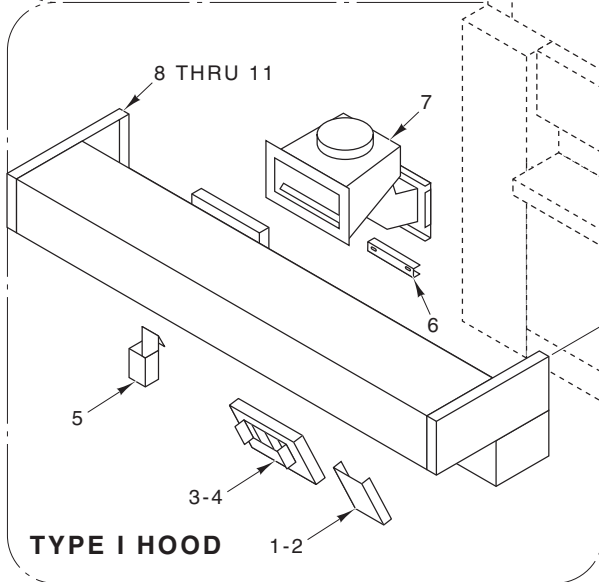
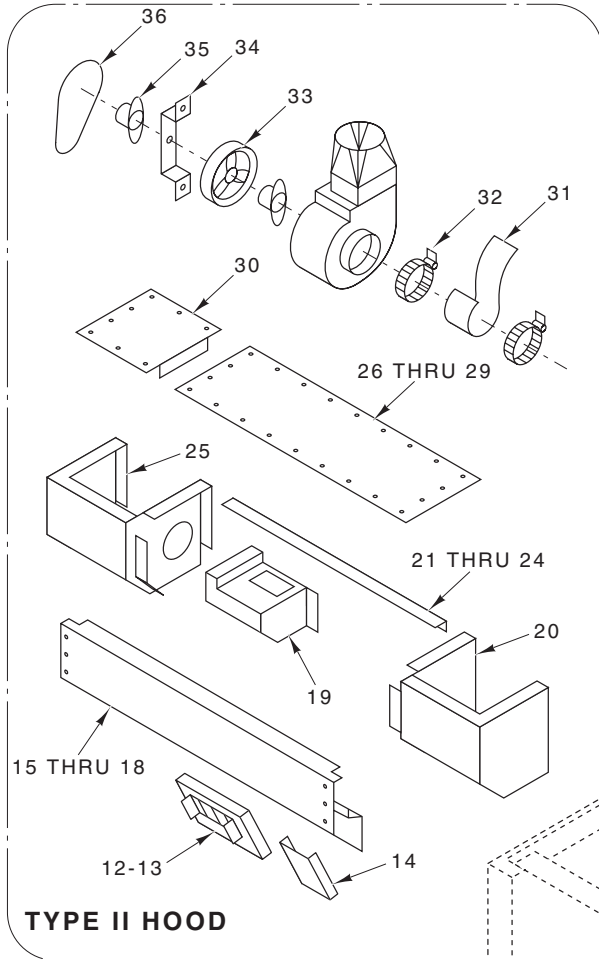
CABINET ASSEMBLY

ILLUS.	PART NO.	NAME OF PART	AMT.
PL-56667			
1	01-10M781-00002	Plate – Stop Bar (LH) (OV850G).....	1
2	01-10M784-00005	Bushing (OV850G)	1
3	01-1000V6-00065	Switch – Lever Activated (OV850G)	1
4	01-10M784-00001	Bar – Emergency Stop (58.1 In.) (OV850G).....	1
5	01-10M784-00002	Bar – Emergency Stop (76.1 In.) (OV850G).....	1
6	01-10M784-00003	Bar – Emergency Stop (94.1 In.) (OV850G).....	1
7	01-10M784-00004	Bar – Emergency Stop (112.1 In.) (OV850G).....	1
8	01-10M911-00001	Blower Mount (OV850G)	1

CABINET ASSEMBLY

ILLUS. PL-56667	PART NO.	NAME OF PART	AMT.
9	01-1M1211-00005	Panel – Plain Upper Front (84.75 In.) (OV850G)	1
10	01-1M1211-00006	Panel – Plain Upper Front (102.75 In.) (OV850G)	1
11	01-1M1211-00007	Panel – Plain Upper Front (120.75 In.) (OV850G)	1
12	01-1M1211-00008	Panel – Plain Upper Front (138.75 In.) (OV850G)	1
13	01-1M1211-00001	Panel – Plain Upper Front (84.75 In.) (OV851G)	1
14	01-1M1211-00002	Panel – Plain Upper Front (102.75 In.) (OV851G)	1
15	01-1M1211-00003	Panel – Plain Upper Front (120.75 In.) (OV851G)	1
16	01-1M1211-00004	Panel – Plain Upper Front (138.75 In.) (OV851G)	1
17	01-10M932-00001	Bracket – Top Wall Corner	4
18	01-1M1029-00001	Cap – Cover End (OV850G)	4
19	01-10M831-00007	Hanger – Ceiling (Front & Rear) (79.94 In.)	2
20	01-10M831-00001	Hanger – Ceiling (Sides) (84.75 In.)	2
21	01-10M831-00002	Hanger – Ceiling (Sides) (102.75 In.)	2
22	01-10M831-00003	Hanger – Ceiling (Sides) (120.75 In.)	2
23	01-10M831-00004	Hanger – Ceiling (Sides) (138.75 In.)	2
24	01-10M820-0018C	Panel – Wall Cres. (18 x 83.5)	AR
25	01-10M820-0042C	Panel – Wall Cres. (42 x 83.5)	AR
26	01-10M822-00001	Corner – Wall (LH Rear)	1
27	01-10M820-00018	Panel – Ceiling	AR
28	01-10M820-00010	Panel – Ceiling	1
29	01-10M913-00009	Angle – Interior Trim (Inside Rear Corner)	2
30	01-10M822-00001	Corner – Wall (RH Rear)	1
31	01-1M1024-00001	Floor – Filler Package	1
32	01-10M867-00002	Floor – Section W/Holes	AR
33	01-10M868-00001	Floor – Section Plain	4
34	01-10M818-00001	Base – Rear (79.5 In.)	1
35	01-10M818-00002	Base – Rear (97.5 In.)	1
36	01-10M818-00003	Base – Rear (115.5 In.)	1
37	01-10M818-00004	Base – Rear (133.5 In.)	1
38	01-10M126-00001	Base Shim – Leveling	AR
39	01-10M832-00001	Beam – Floor (79.5 In.)	1
40	01-10M832-00002	Beam – Floor (97.5 In.)	1
41	01-10M832-00003	Beam – Floor (115.5 In.)	1
42	01-10M832-00004	Beam – Floor (133.5 In.)	1
43	01-10M817-00001	Base – Side Assy. (92.5 In.)	2
44	01-10M817-00002	Base – Side Assy. (68.5 In.)	1
45	01-10M817-00003	Base – Side Assy. (49.5 In.)	1
46	01-10M817-00004	Base – Side Assy. (76.5 In.)	1
47	01-10M913-00007	Angle – Interior Trim (Inside Rear Corner)	2
48	01-10M913-00008	Angle – Interior Trim (Inside Rear Corner)	2
49	01-10M690-00001	Socket & Plate – Light (OV850G)	2
50	01-10M692-00001	Guard – Light (OV850G)	2
51	01-10M766-00001	Panel – Louvered (19.0 In.) (OV850G) (Not Shown)	AR
52	01-10M766-00002	Panel – Louvered (20.0 In.) (OV850G) (Not Shown)	AR
53	01-10M766-00003	Panel – Louvered (29.0 In.) (OV850G) (Not Shown)	AR
54	01-1M2983-00001	Panel – Lower Access (OV851G)	See Chart
55	01-1M2983-00002	Panel – Lower Access (OV851G)	See Chart
56	01-1M2983-00003	Panel – Lower Access (OV851G)	See Chart
57	01-100V18-00110	Handle (Per Door)	1
58	01-1M3090-00001	Light Fixture (W/O Lamp)	1
59	01-1000V7-0014B	Base/Socket – Light Fixture	1
60	01-1000V7-00020	Halogen Lamp	1
61	01-1M3060-00001	Mount – Base	1
62	01-1M2825-00001	Reflector	1
63	01-1000V6-00065	Switch – Lever Activated	3
64	01-1000V5-00166	Bushing – Snap (for 0.75 Dia. Hole)	1
65	01-1M3056-00002	Bracket – Mounting	1
	01-10M545-00007	Bushing – Stop Panel	2

Quantity	18 Pan	24 Pan	30 Pan	36 Pan
Item 54	1	1	1	1
Item 55	1	1	1	1
Item 56		1	2	3



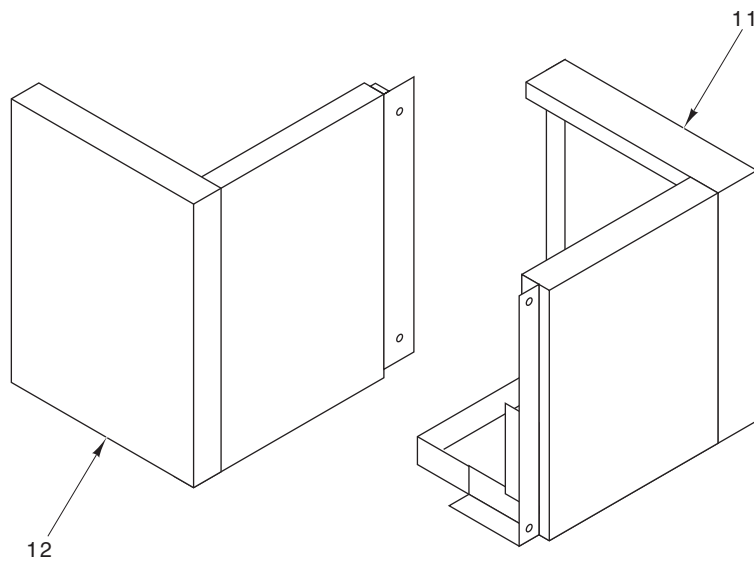
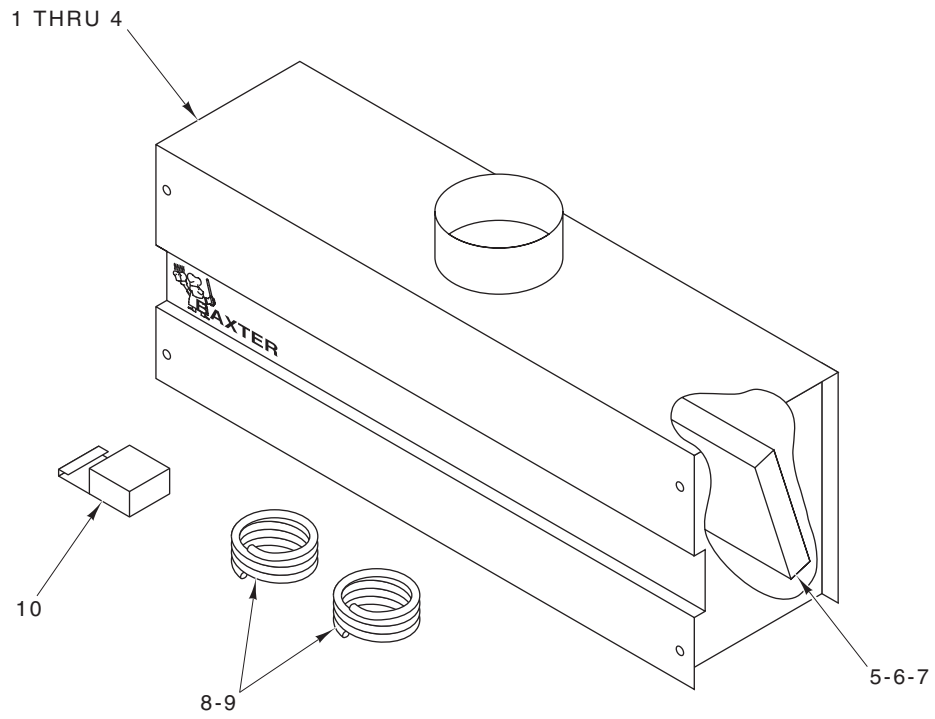
PL-56664

**HOOD
(OV850G)**

**HOOD
(OV850G)**

ILLUS. PL-56664	PART NO.	NAME OF PART	AMT.
1	01-10M580-00001	Filler – Hood (6.7 In.)	*
2	01-1M1580-00002	Filler – Hood (8.3 In.)	*
3	01-100V18-00052	Filter – Hood (9.6 In. x 19.6 In.)	*
4	01-100V18-00056	Filter – Hood (9.6 In. x 24.6 In.)	*
5	01-1M1586-00001	Grease Cup	2
6	01-1M1647-00001	Mount Channel – Exhaust Box	2
7	01-1M1637-00001	Box – Exhaust	1
8	01-1M1641-00001	Hood (92.5 In.)	1
9	01-1M1641-00002	Hood (110.5 In.)	1
10	01-1M1641-00003	Hood (128.5 In.)	1
11	01-1M1641-00004	Hood (146.5 In.)	1
12	01-100V18-00052	Filter – Hood (9.6 In. x 19.6 In.)	*
13	01-100V18-00056	Filter – Hood (9.6 In. x 24.6 In.)	*
14	01-10M971-00001	Filler – Hood	*
15	01-10M914-00001	Face Skin – Hood (59 In.)	1
16	01-10M914-00002	Face Skin – Hood (77 In.)	1
17	01-10M914-00003	Face Skin – Hood (95 In.)	1
18	01-10M914-00004	Face Skin – Hood (113 In.)	1
19	01-10M958-00001	Box – Damper	1
20	01-10M920-00002	Enclosure – RH Jamb	1
21	01-10M918-00001	Angle – Hood Cover (57 In.)	1
22	01-10M918-00002	Angle – Hood Cover (75 In.)	1
23	01-10M918-00003	Angle – Hood Cover (93 In.)	1
24	01-10M918-00004	Angle – Hood Cover (111 In.)	1
25	01-10M920-00001	Enclosure – LH Jamb	1
26	01-10M917-00002	Cover – Hood (43 In.)	1
27	01-10M917-00003	Cover – Hood (61 In.)	1
28	01-10M917-00004	Cover – Hood (79 In.)	1
29	01-10M917-00005	Cover – Hood (97 In.)	1
30	01-10M917-00001	Cover – Hood (18.5 In.)	1
31	01-1M1033-00002	Seal – Blower	1
32	01-1000V1-00015	Clamp – Band	2
33	01-1000V3-00073	Sheave	1
34	01-1M1030-00001	Bracket – Blower	1
35	01-1000V0-00034	Bearing – Flange	2
36	01-1000V3-00074	Belt	1
	01-1M1033-00001	Blower Assy.	1

*Quantity Varies With Oven. Call Factory

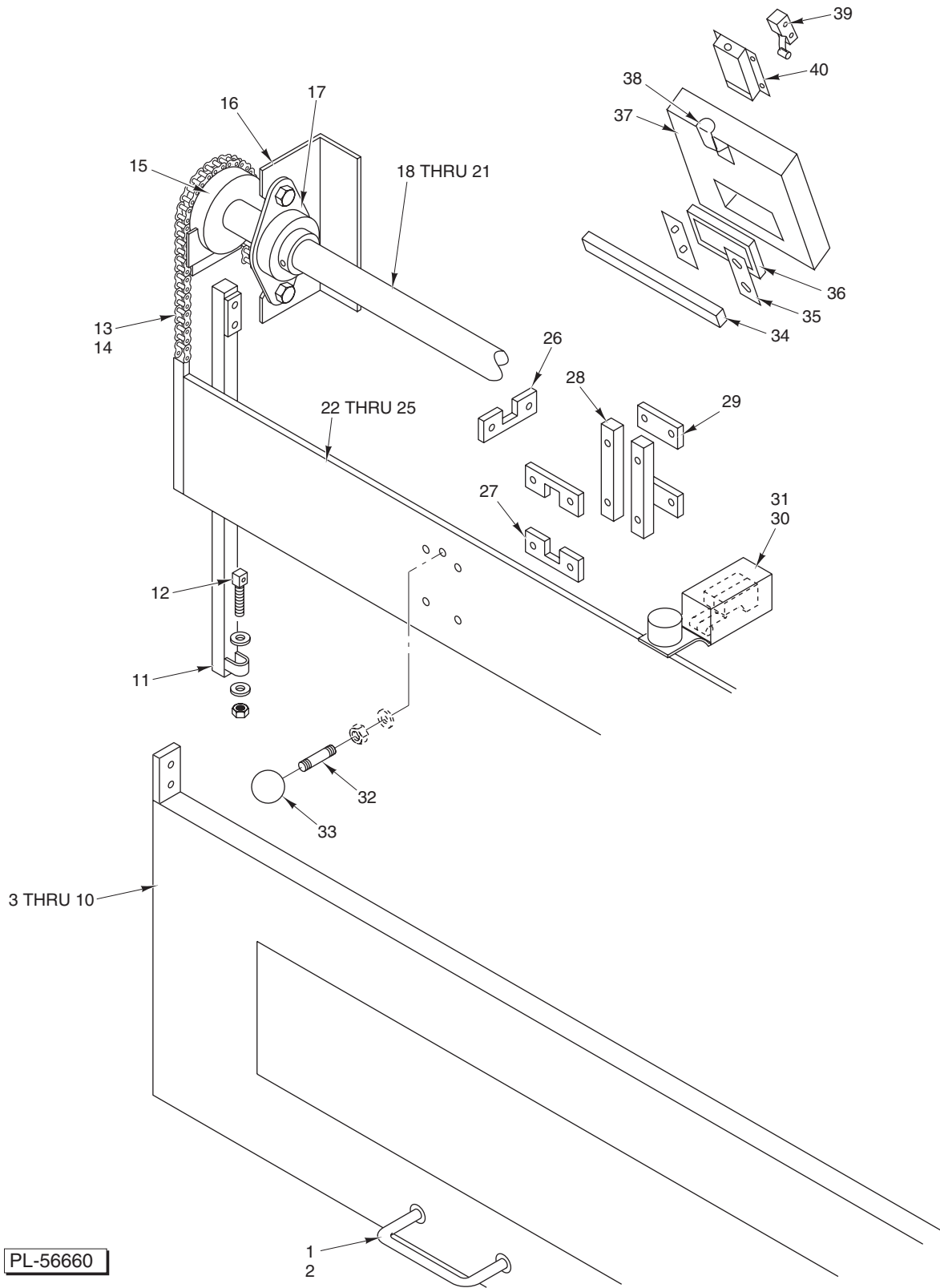


PL-56969

**HOOD
(OV851G)**

**HOOD
(OV851G)**

ILLUS.	PART NO.	NAME OF PART	AMT.
PL-56969			
1	01-1M2967-00001	Hood (M36)	1
2	01-1M2967-00002	Hood (M30)	1
3	01-1M2967-00003	Hood (M24)	1
4	01-1M2967-00004	Hood (M18)	1
5	01-100V18-00052	Filter – Hood (9.6 In. x 19.6 In.)	AR
6	01-1M3067-00002	Filter – Hood (5.32) (M18, M30, & M36)	AR
7	01-1M3067-00003	Filter – Hood (8.85) (M18, M30, & M36)	AR
8	01-1M1004-00100	Tube – Pilot (Gas & Pressure Switch) (M18)	2
9	01-1M1004-00072	Tube – Pilot (Gas & Pressure Switch) (M24, M30, & M36)	2
10	01-1M3032-00001	Cup – Grease	AR
11	01-1M3037-00001	Enclosure Jamb Top (RH)	1
12	01-1M3037-00002	Enclosure Jamb Top (LH)	1
	01-100V17-00026	Tube – Ell 90 Deg. 1/4 x 1/8 NPT	1
	01-100V17-00280	Fitting – Compression 1/8 NPT	1
	01-1000V4-00009	Screw – Sheet Metal Hex Hd.	AR

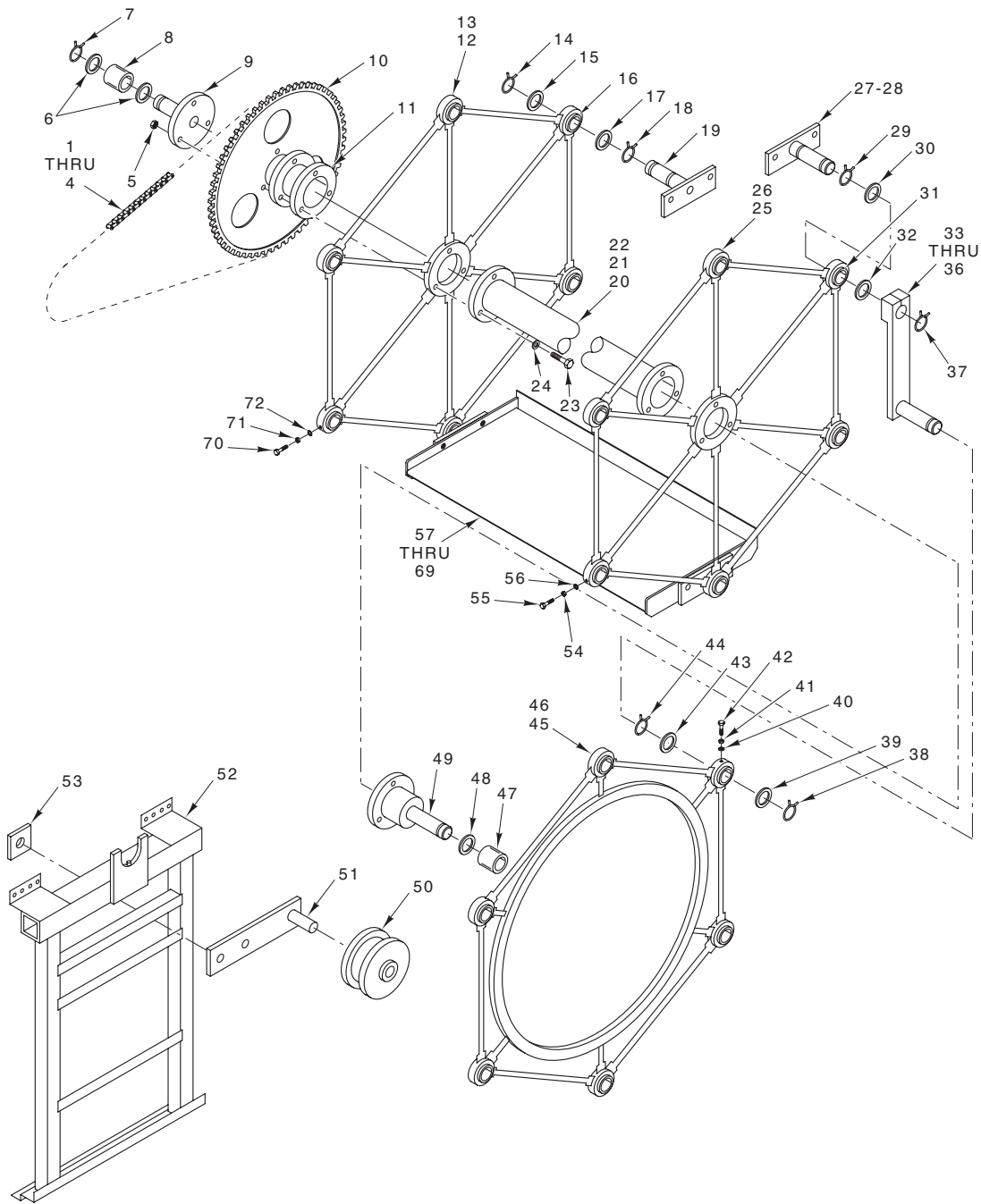


PL-56660

LOADING AND SERVICE DOOR

LOADING AND SERVICE DOOR

ILLUS. PL-56660	PART NO.	NAME OF PART	AMT.
1	01-1M2871-00001	Handle – Door	1
2	01-1M2872-00001	Backer Plate – Door Handle	1
3	01-1M2868-00001	Door – Loading W/Window (58.5 In.)	1
4	01-1M2868-00002	Door – Loading W/Window (76.5 In.)	1
5	01-1M2868-00003	Door – Loading W/Window (94.5 In.)	1
6	01-1M2868-00004	Door – Loading W/Window (112.5 In.)	1
7	01-1M2868-00005	Door – Loading W/O Window (58.5 In.)	1
8	01-1M2868-00006	Door – Loading W/O Window (76.5 In.)	1
9	01-1M2868-00007	Door – Loading W/O Window (94.5 In.)	1
10	01-1M2868-00008	Door – Loading W/O Window (112.5 In.)	1
11	01-10M440-00001	Post – Door Guide	2
12	01-100M27-00001	Anchor – Chain	2
13	01-1000V3-00051	Chain – #40 (47 Pitches)	2
14	01-1000V3-00008	Link – Connector (#40)	2
15	01-1000V3-00043	Sprocket – #40B 1 In. Bore (21 teeth)	2
16	01-100M41-00001	Bracket	2
17	01-1000V0-00008	Bearing – Ball	2
18	01-10M758-00001	Shaft – Counterweight (58.5 In.)	1
19	01-10M758-00002	Shaft – Counterweight (76.5 In.)	1
20	01-10M758-00003	Shaft – Counterweight (94.5 In.)	1
21	01-10M758-00004	Shaft – Counterweight (112.5 In.)	1
22	01-10M764-00010	Counterweight Assy. (57.25 In.)	1
23	01-10M764-00011	Counterweight Assy. (75.25 In.)	1
24	01-10M764-00012	Counterweight Assy. (93.25 In.)	1
25	01-10M764-00013	Counterweight Assy. (111.25 In.)	1
26	01-1M1251-00001	Bumper – Shaft Counterweight	1
27	01-100M40-00001	Guide – Door Weight	2
28	01-100M40-00003	Guide – Door Weight	2
29	01-100M40-00002	Guide – Door Weight	2
30	01-1M1015-00001	Box – Door Interlock Assy.	1
31	01-1000V6-00065	Micro-Switch – Lever Actuated	2
32	01-100M39-00001	Handle – Counterweight (OV850G)	1
33	01-100V18-00041	Knob (OV850G)	1
34	01-10M929-00001	Bar – Door Retention	1
35	01-100M97-00002	Retainer – Window	2
36	01-1M1419-00001	Window – View	1
37	01-10M774-00001	Door – Access (20 Deg. Panel)	1
38	01-1M1002-00001	Actuator – Door Interlock	1
39	01-1000V6-00065	Micro-Switch – Lever Actuated	2
40	01-1M1003-00001	Bracket – Service Door Interlock	1
	01-10M331-00001	Stop – Counterweight	1



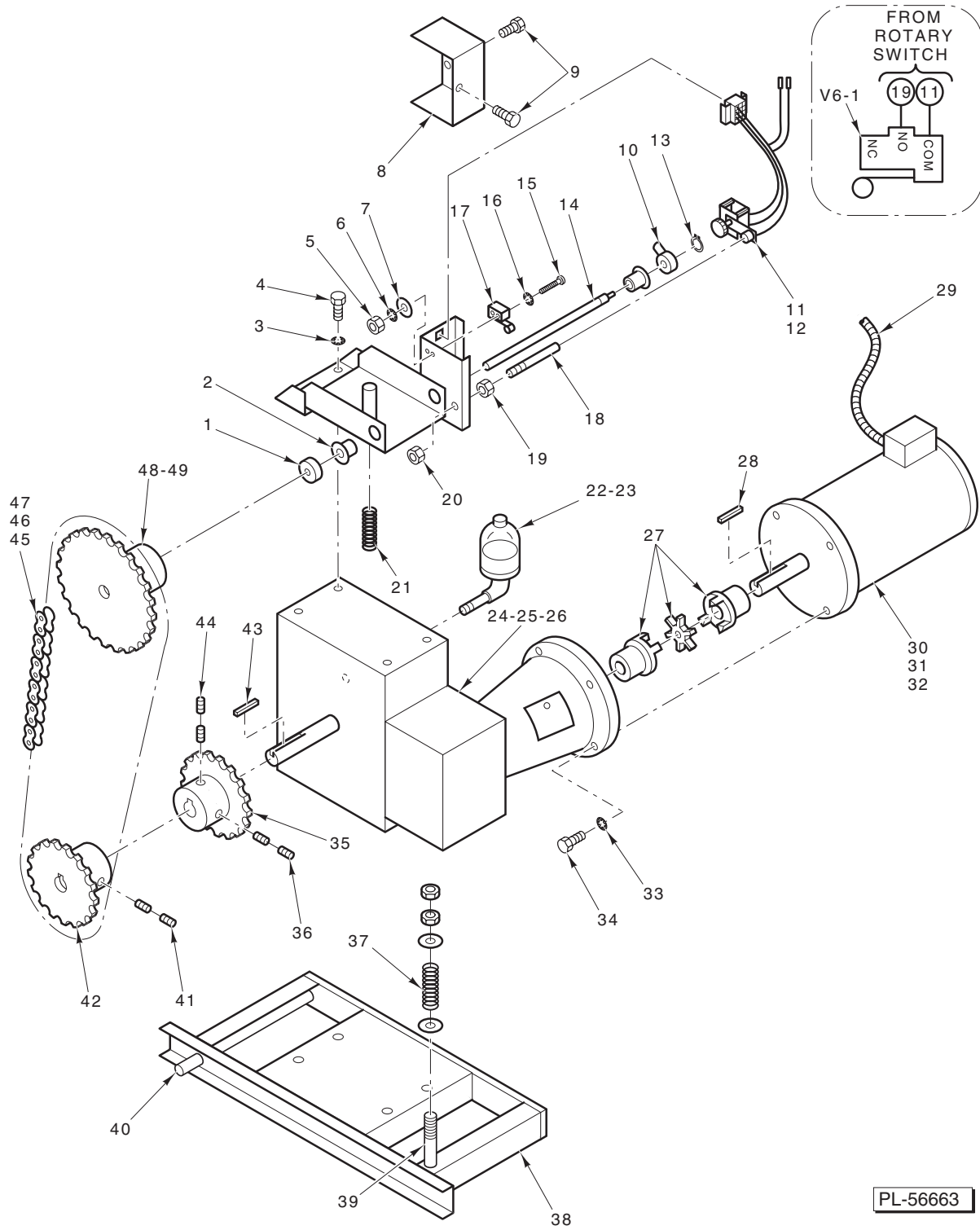
PL-56567

MAIN DRIVE ASSEMBLY

ILLUS.	PART NO.	NAME OF PART	AMT.
PL-56567			
1	01-10M753-0001C	Chain – Main Drive (6 Tray)	1
2	01-10M753-0004C	Chain – Main Drive (4 Tray) (OV850G)	1
3	01-1000V3-00096	Link – Master #60	1
4	01-1000V3-00095	Link Roller #60	1
5	01-1000V4-00007	Lock Nut 1/2 (Vibresist)	1
6	01-1000V0-00019	Washer – Thrust	2
7	01-1000V1-00011	Snap Ring 1 ¹⁵ / ₁₆	1
8	01-1M1112-00001	Bearing – Main Assy.	1
9	01-10M540-00001	Carrier – Journal End Assy.	1
10	01-100M61-00096	Sprocket - #60 (96 Tooth)	1
11	01-10M815-00005	Shaft – Main Assy. (3.25 In.)	1

MAIN DRIVE ASSEMBLY

ILLUS.	PART NO.	NAME OF PART	AMT.
PL-56567			
12	01-10M823-00006	Wheel – Carrier (6 Tray)	1
13	01-10M823-0012A	Wheel – Carrier (4 Tray)	1
14	01-1000V1-00004	Snap Ring 1½	AR
15	01-1000V0-00018	Thrust Washer	AR
16	01-1M3683-00002	Bearing Assy.	AR
17	01-1000V0-00018	Thrust Washer	AR
18	01-1000V1-00004	Snap Ring 1½	AR
19	01-10M562-00001	Support – Tray	AR
20	01-10M815-00001	Shaft (62.5 In.)	1
21	01-10M815-00002	Shaft (80.5 In.)	1
22	01-10M815-00003	Shaft (98.5 In.)	1
23	01-1000V4-00028	Bolt – Shear ½ x 2.25 Hex Hd.	1
24	01-1000V4-00008	Washer ½	1
25	01-10M823-00006	Wheel – Carrier (6 Tray)	1
26	01-10M823-0012A	Wheel – Carrier (4 Tray)	1
27	01-10M562-00001	Support – Tray	AR
28	01-10M562-00002	Support – Tray	AR
29	01-1000V1-00004	Snap Ring 1½	AR
30	01-1000V0-00018	Thrust Washer	AR
31	01-1M3683-00002	Bearing Assy.	AR
32	01-1000V0-00018	Thrust Washer	AR
33	01-10M563-00001	Leveler – Arm Assy.	AR
34	01-1000V4-00265	Bolt ½-13 x 2 Hex Hd.	AR
35	01-1000V4-00264	Lockwasher ½ Internal Tooth	AR
36	01-1000V4-00266	Nut ½-13 Hex	AR
37	01-1000V1-00004	Snap Ring 1½	AR
38	01-1000V1-00004	Snap Ring 1½	AR
39	01-1000V0-00018	Thrust Washer	AR
40	01-1000V4-00264	Lockwasher ½ Internal Tooth	AR
41	01-1000V4-00266	Nut ½-13 Hex	AR
42	01-1000V4-00267	Bolt ½-13 x 1 Hex Hd.	AR
43	01-1000V0-00018	Thrust Washer	AR
44	01-1000V1-00004	Snap Ring 1½	AR
45	01-10M824-00006	Wheel Leveler (6 Tray)	1
46	01-10M824-0012A	Wheel Leveler (4 Tray)	1
47	01-1M1112-00001	Bearing – Main Assy.	1
48	01-1000V0-00019	Washer – Thrust	1
49	01-10M539-00001	Leveler – Journal End Assy.	1
50	01-10M556-00001	Wheel – Guide Assy.	2
51	01-10M554-00004	Guide – Wheel Mount Assy.	2
52	01-10M816-00001	Stand – Main	2
53	01-10M278-00001	Pad – Oven Guide Roll Arm	4
54	01-1000V4-00266	Nut ½-13 Hex	AR
55	01-1000V4-00267	Bolt ½-13 x 1 Hex Hd.	AR
56	01-1000V4-00264	Lockwasher ½ Internal Tooth	AR
57	01-1M2753-00058	Tray – Perforated (58 x 26 In.)	AR
58	01-1M2753-00076	Tray – Perforated (76 x 26 In.)	AR
59	01-1M2753-00094	Tray – Perforated (94 x 26 In.)	AR
60	01-1M2753-00112	Tray – Perforated (112 x 26 In.)	AR
61	01-1M2754-00058	Tray – Solid (58 x 26 In.)	AR
62	01-1M2754-00076	Tray – Solid (76 x 26 In.)	AR
63	01-1M2754-00094	Tray – Solid (94 x 26 In.)	AR
64	01-1M2754-00112	Tray – Solid (112 x 26 In.)	AR
65	01-100V21-094-1	Liner – Tray Cement Fiber (0.5 x 25.75 x 18)	AR
66	01-100V21-094-2	Liner – Tray Cement Fiber (0.5 x 25.75 x 28.625)	AR
67	01-100V21-094-3	Liner – Tray Cement Fiber (0.5 x 25.75 x 36)	AR
68	01-1M2747-00001	Retainer – Tray Liner	AR
69	01-1M2764-00001	Angle – Tray Ends	AR
70	01-1000V4-00267	Bolt ½-13 x 1 Hex Hd.	AR
71	01-1000V4-00266	Nut ½-13 Hex	AR
72	01-1000V4-00264	Lockwasher ½ Internal Tooth	AR
	01-10M813-00006	Carrier Wheel Assy. (6 Tray) (Incls. Items 25, 27, & 29 thru 44)	1
	01-10M813-0012A	Carrier Wheel Assy. (4 Tray) (Incls. Items 26, 27, & 29 thru 44)	1
	01-10M814-00006	Leveler Wheel Assy. (6 Tray) (Incls. Items 25 & 28 thru 45)	1
	01-10M814-0012A	Leveler Wheel Assy. (4 Tray) (Incls. Items 26, 28 thru 44, & 46)	1

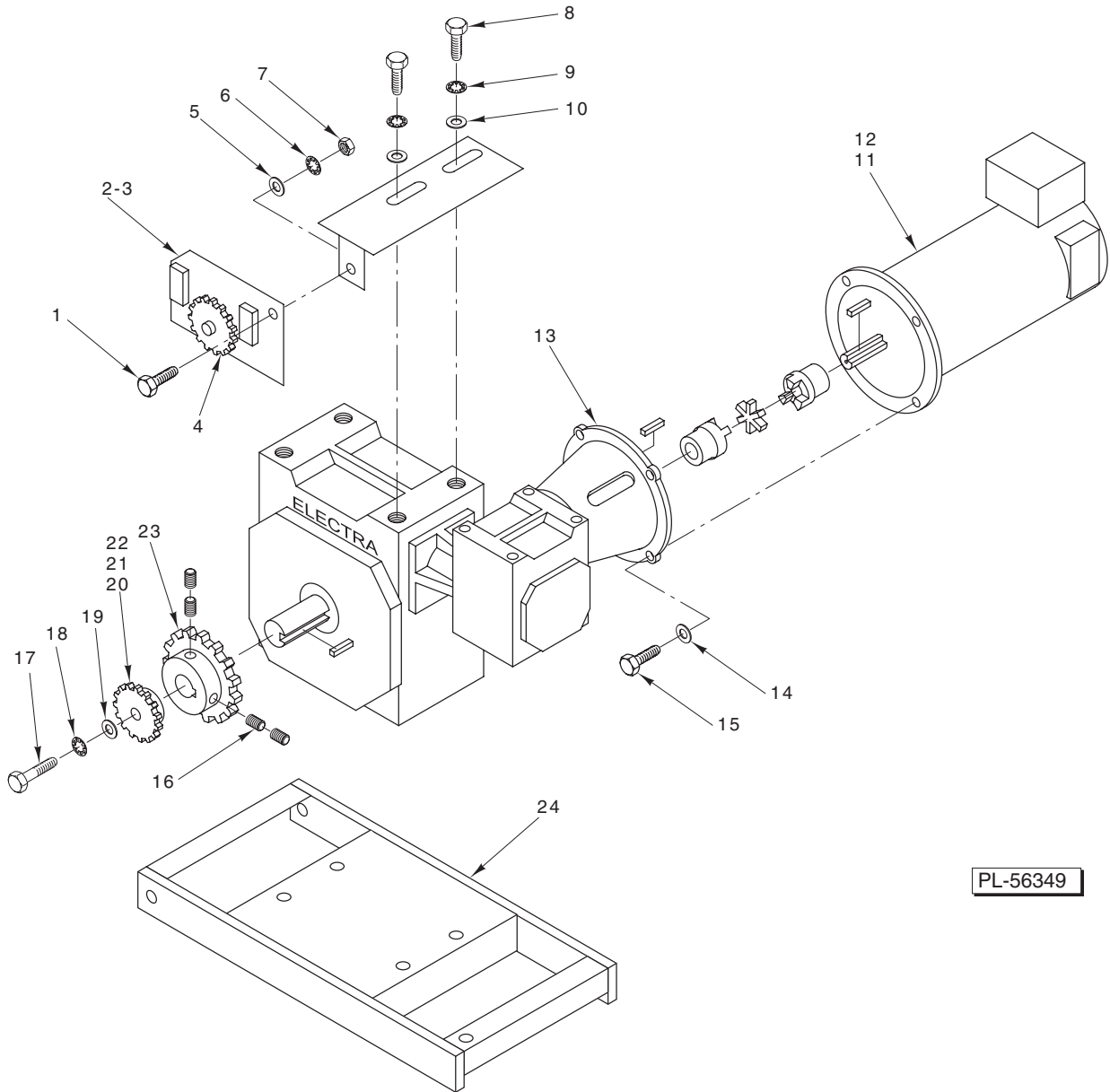


PL-56663

**MAIN DRIVE MOTOR
(OV850G)**

**MAIN DRIVE MOTOR
(OV850G)**

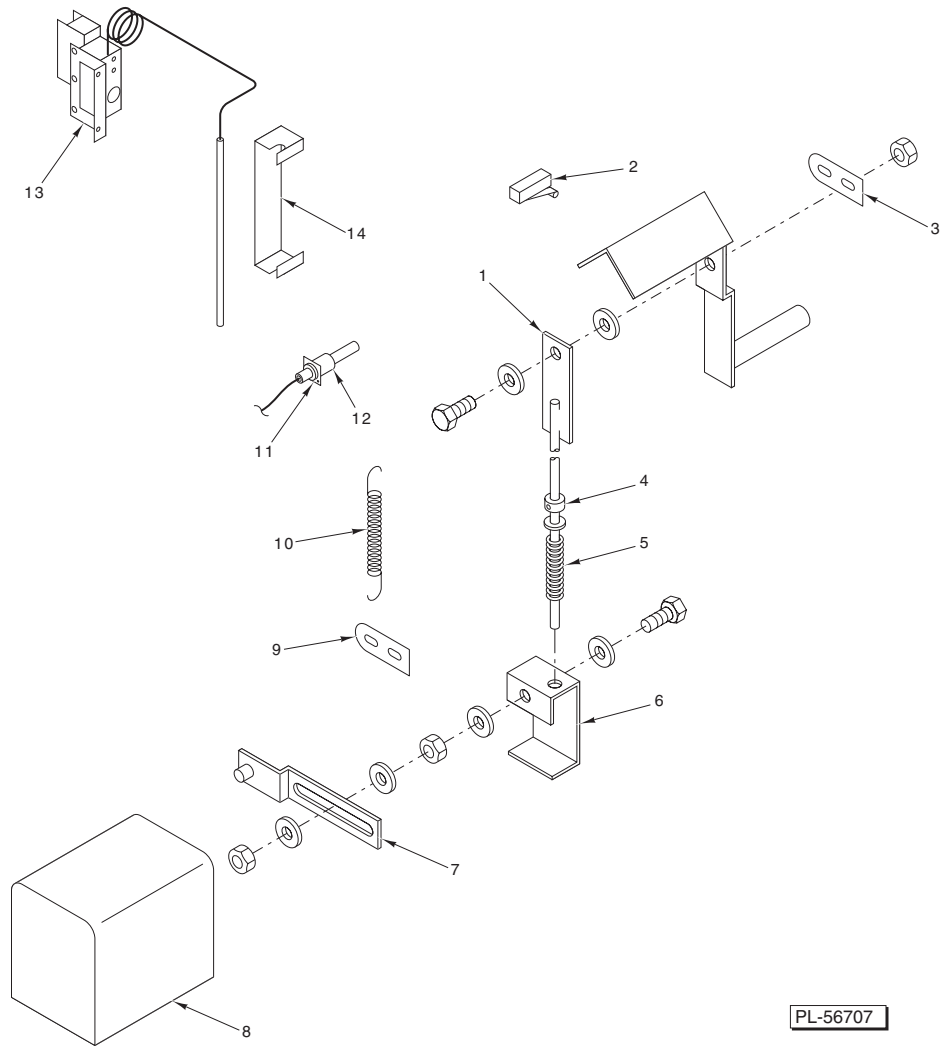
ILLUS. PL-56663	PART NO.	NAME OF PART	AMT.
1	01-1000V1-00001	Collar Set ³ / ₄	1
2	01-10M545-00007	Bushing – Flange	1
3	-	Lockwasher ³ / ₈ Internal Star	2
4	-	Mach. Screw ³ / ₈ -16 x ¹ / ₂ Hex Hd.	2
5	-	Nut – Hex 6-32	2
6	-	Lockwasher #6 Internal Star	2
7	-	Washer – Fender	2
8	01-10M223-00001	Cover – Switch Box	1
9	-	Mach. Screw 10-32 x ³ / ₈ Hex Hd.	3
10	01-10M547-00001	Pointer – Tray Stop	1
11	01-10M978-00004	Switch – Rotary (4 Tray)	1
12	01-10M978-00006	Switch – Rotary (6 Tray)	1
13	01-1000V1-00003	Ring – Snap ³ / ₄	1
14	01-10M548-00001	Shaft Assy. – Switch Box	1
15	-	Mach. Screw 6-32 x 1 Pan Hd.	2
16	-	Lockwasher #6 Internal Star	2
17	01-1000V6-00001	Switch – Micro W/Roller	1
18	01-10M545-00008	Stud – Rotary Switch	1
19	-	Nut ³ / ₈ -16 Hex	1
20	-	Nut ³ / ₈ -16 Hex	1
21	01-100V20-00004	Spring – Pointer Box Tensioner	1
22	01-100V17-00175	Reservoir – PC Oil Cup/Gauge	1
23	01-1M1753-00002	Oil – Gear (600W Cylinder)	1
24	01-1000V2-00015	Gearbox (300:1)	1
25	01-1000V2-0015A	Seal – Input	1
26	01-1000V2-0015B	Seal – Output	1
27	01-1000V2-00019	Coupling – Motor	1
28	01-10M213-00001	Key	1
29	01-1M1150-00014	Conduit ³ / ₈ In. Dia.	1
30	01-10M213-00001	Motor Assy. (Incls. Items 28 & 31)	1
31	01-1000V8-00064	Brush – Motor (Baldor)	3
32	01-1000V9-00026	Brush – Motor (GE or Boston Gear)	1
33	-	Lockwasher ³ / ₈ Internal Star	4
34	-	Mach. Screw ³ / ₈ -16 x 1 Hex Hd.	4
35	01-1000V3-00044	Sprocket #60B (16T)	1
36	-	Set Screw ⁵ / ₁₆ -18 x ¹ / ₂	2
37	01-100V20-00001	Spring	1
38	01-10M578-00001	Mount – Motor	1
39	01-10M478-00001	Post – Spring	1
40	01-10M136-00001	Shaft – Motor Mount Pivot	1
41	-	Set Screw	2
42	01-1000V3-00045	Sprocket #40B (20T)	1
43	01-10M213-00002	Key	1
44	-	Set Screw ⁵ / ₁₆ -18 x ¹ / ₂	2
45	01-1000V3-00069	Chain – Roller #40 (51 Pitches)	1
46	01-1000V3-00051	Chain – Roller #40 (47 Pitches)	1
47	01-1000V3-00008	Link – Connector #40	1
48	01-1000V3-00030	Sprocket #40B (20T)	1
49	01-1000V3-00033	Sprocket #40B (30T)	1



**MAIN DRIVE MOTOR
(OV851G)**

**MAIN DRIVE MOTOR
(OV851G)**

ILLUS. PL-56349	PART NO.	NAME OF PART	AMT.
1	-	Mach. Screw 3/8-16 x 3/4 Hex Hd.	1
2	01-1M3005-00001	Pointer Assy. (Incls. Item 3)	1
3	01-1000V6-00192	Micro-Switch – Snap Action	1
4	01-1M3002-00001	Gear (Tray Number & Stop)	1
5	-	Washer 3/8	1
6	-	Lockwasher 3/8	1
7	-	Nut 3/8-16 Hex	1
8	-	Mach. Screw 3/8-16 x 3/4 Hex Hd.	2
9	-	Lockwasher 3/8	2
10	-	Washer 3/8	2
11	01-10M512-00001	Motor Assy.	1
12	01-1000V8-00064	Brush – Motor (Baldor)	2
13	01-1000V2-00025	Gearbox (300:1) (Alum.)	1
14	-	Lockwasher 3/8	4
15	-	Mach. Screw 3/8-16 x 1 Hex Hd.	4
16	-	Set Screw 5/16-18 x 1/2	4
17	-	Mach. Screw 3/8-16 x 1 Hex Hd.	1
18	-	Lockwasher 3/8	1
19	-	Washer 3/8	1
20	01-1000V2-00024	Gear – Spur (32T) (4 Tray)	2
21	01-1000V2-00023	Gear – Spur (40T) (5 Tray)	1
22	01-1000V2-00022	Gear – Spur (48T) (6 Tray)	1
23	01-1000V3-00044	Sprocket – Gear Chain #60B (16T)	1
24	01-10M578-00003	Mount – Motor	1
	01-1M1254-00001	Kit – Hand Crank	1
	01-1M1753-00001	Oil – Gear (Synthetic)	1

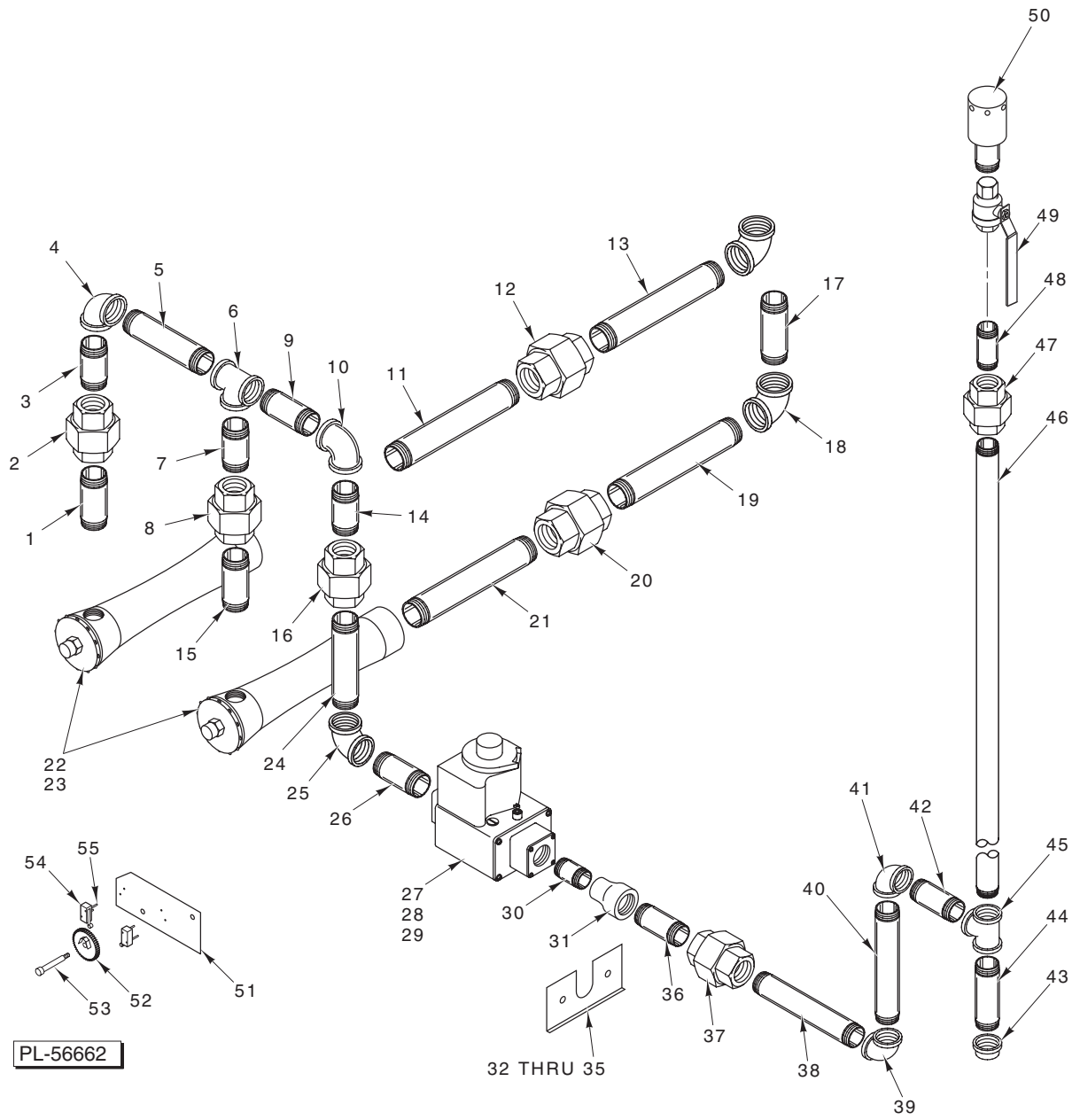


PL-56707

PURGE KIT*
(OV851G)

**PURGE KIT*
(OV851G)**

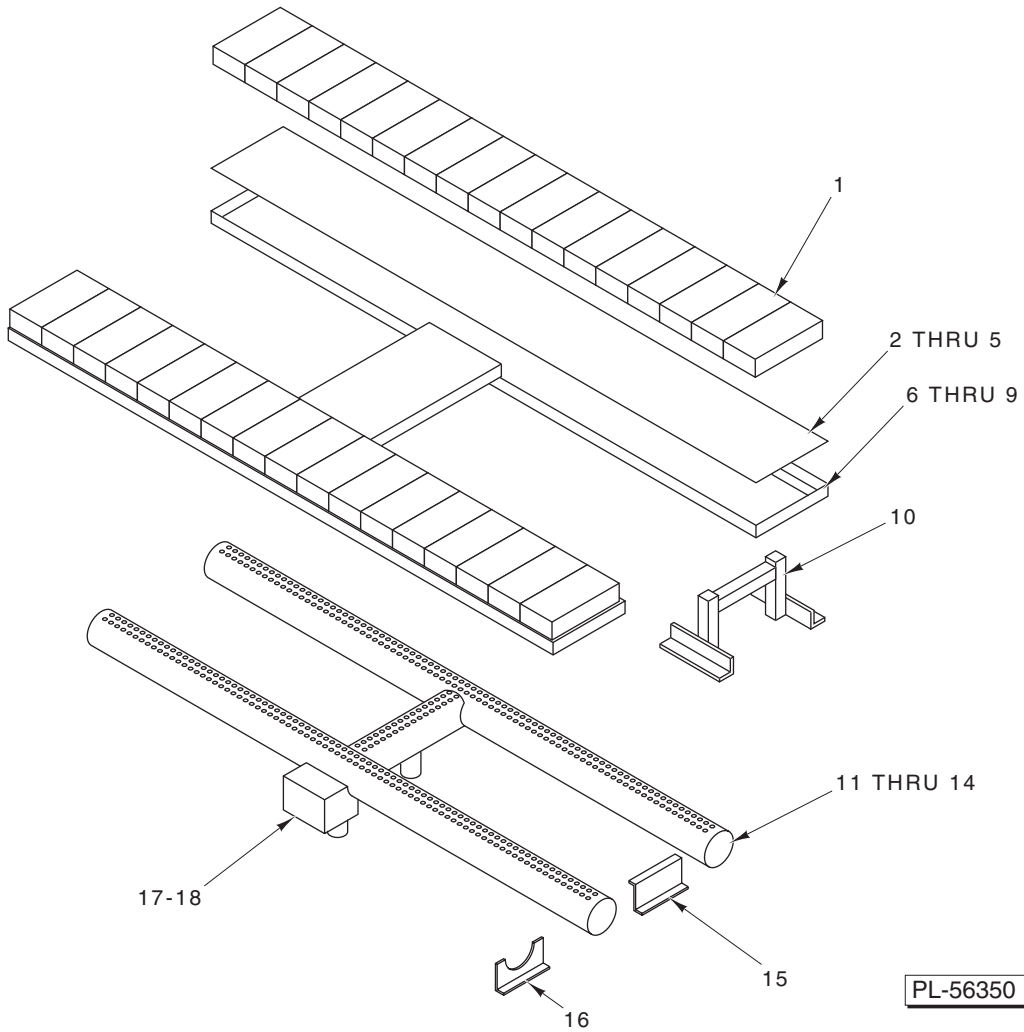
ILLUS.	PART NO.	NAME OF PART	AMT.
PL-56707			
1	01-1M3049-00001	Actuator Weldment – Face Panel	1
2	01-1000V6-00065	Micro-Switch – Lever Activated	3
3	01-1M3981-00001	Clip – Spring	1
4	01-1000V1-00017	Collar – Set	1
5	01-100V20-00015	Spring	1
6	01-1M3063-00001	Clip – Purge Arm	1
7	01-1M3064-00001	Arm – Crank	1
8	01-1000V8-00033	Motor – Damper	1
9	01-1M3981-00001	Clip – Spring	1
10	01-100V20-00016	Spring – Extension	1
11	01-1A1907-00001	Mounting Assy. – Thermocouple	1
12	01-100V10-00141	Thermocouple	1
13	01-1000V6-00118	Thermostat-High Limit	1
14	01-1M1706-00001	Bracket – High Limit	1
	01-1M3993-00001	Retainer – Purge, Face Panel	8
	01-1M3019-00004	Seal – Purge, Face Panel	1
	01-1000V5-00166	Bushing	1
		*OV850G	
	01-1M1748-00001	Kit – High Limit Replacement (Replaces Bimetal High Limit)	1
	01-1M3974-00001	Kit – Purge (For Ovens Without Factory-Installed Purge System.) (Uses 01-1000V8-00083 Blower Motor)	1



GAS SUPPLY ASSEMBLY

GAS SUPPLY ASSEMBLY

ILLUS. PL-56662	PART NO.	NAME OF PART	AMT.
1	01-100V17-00115	Pipe 1 x 2	1
2	01-100V17-00117	Union 1 In.	1
3	01-100V17-00115	Pipe 1 x 2	1
4	01-100V17-00119	Elbow – Reducing 1 x 1 1/4	1
5	01-100V17-00121	Pipe 1 1/4 x 6	1
6	01-100V17-00122	Tee – Reducing 1 1/4 x 1 1/4	1
7	01-100V17-00115	Pipe 1 x 2	1
8	01-100V17-00117	Union 1 In.	1
9	01-100V17-00120	Pipe 1 1/4 x 3	1
10	01-100V17-00119	Elbow – Reducing 1 x 1 1/4	1
11	01-100V17-00123	Pipe – 2 1/2 x 8	1
12	01-100V17-00063	Union 2 1/2	1
13	01-100V17-00123	Pipe – 2 1/2 x 8	1
14	01-100V17-00115	Pipe 1 x 2	1
15	01-100V17-00115	Pipe 1 x 2	1
16	01-100V17-00117	Union 1 In.	1
17	01-100V17-00324	Pipe 2 1/2 Dia. x 3	1
18	01-100V17-00103	Ell 2 1/2 x 45 Deg.	1
19	01-100V17-00123	Pipe – 2 1/2 x 8	1
20	01-100V17-00063	Union 2 1/2	1
21	01-000V17-00123	Pipe – 2 1/2 x 8	1
22	01-1000V9-00050	Mixer – Gas 2 1/2 In. Dia. (Natural Gas)	1
23	01-1000V9-00080	Mixer – Compound (L.P. Gas)	2
24	01-1A1167-00450	Pipe NPT 4 1/2 In.	1
25	01-100V17-00118	Ell – Reducing 90 Deg. 1 x 3/4	1
26	01-100V17-00113	Pipe 3/4 x 3	1
27	01-1000V9-00075	Valve – Gas 3/4 x 3/4 (1979 to 1987)	?
28	01-1000V9-00121	Valve – Gas 1/2 x 3/4 (1987 to Present)	1
29	01-1000V9-00128	Kit – L.P. Conversion	1
30	-	Pipe – Close 1/2 Dia.	1
31	-	Reducer – Bell 3/4 x 1/2	1
32	01-1M1014-00001	Support – Gas Assy.	1
33	-	Bolt 1/4-20 Hex Hd.	2
34	-	Washer 1/4	2
35	-	Nut 1/4-20 Hex	2
36	01-1M1093-00003	Pipe – Mixer Gas Supply Assy.	2
37	01-100V17-00114	Union 3/4	1
38	-	Pipe	1
39	01-100V17-00118	Ell – Reducing 90 Deg. 1 x 3/4	1
40	01-1A1167-01300	Pipe NPT 13 In.	1
41	-	Elbow	1
42	01-1A1167-00300	Pipe NPT 3 In.	1
43	-	Cap – Pipe 1 In.	1
44	01-1A1167-00500	Pipe NPT 5 In.	1
45	-	Tee – Pipe	1
46	01-1A1167-02900	Pipe NPT 29 In.	1
47	01-100V17-00117	Union 1 In.	1
48	01-1A1167-00300	Pipe NPT 3 In.	1
49	01-100V17-00399	Valve – Butterfly 1 In. (Brass)	1
50	01-1M3052-00001	Inlet – Gas Supply	1
51	01-1M2985-00001	Plate – Pointer (Use With Item 23)	1
52	01-1M3002-00001	Pointer Assy. – Gear (Use With Item 23)	1
53	01-1000V4-00109	Screw – Shoulder 3/8 x 1/2 Socket Hd.	1
54	01-1000V6-00192	Switch – Snap (Use With Item 23)	2
55	01-1M3089-00001	Spacer – Switch, Pointer (Use With Item 23)	4
	01-1M3005-00001	Pointer Assy. (Incls. Items 51 thru 55)	1

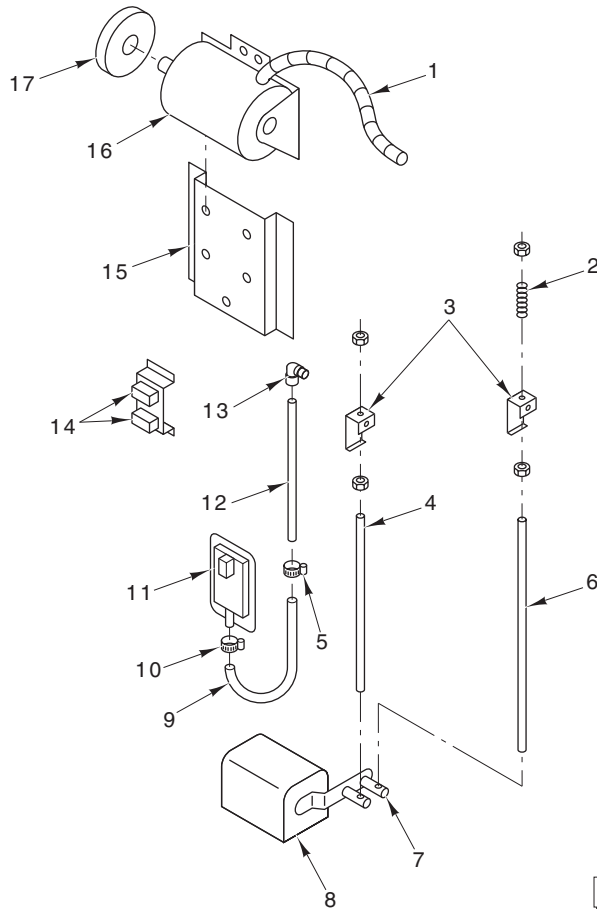


BURNER ASSEMBLY

BURNER ASSEMBLY

ILLUS.	PART NO.	NAME OF PART	AMT.
PL-56350			
1	01-100V21-00003	Firebrick 4 1/2 x 9 x 2 1/2	AR
2	01-10M862-00001	Liner – Brick (8 x 58 In.)	2
3	01-10M862-00002	Liner – Brick (8 x 76 In.)	2
4	01-10M862-00003	Liner – Brick (8 x 94 In.)	2
5	01-10M862-00004	Liner – Brick (8 x 112 In.)	2
6	01-10M860-00001	Rack – Brick (59 In.)	2
7	01-10M860-00002	Rack – Brick (77 In.)	2
8	01-10M860-00003	Rack – Brick (95 In.)	2
9	01-10M860-00004	Rack – Brick (113 In.)	2
10	01-10M581-00001	Stand – Brick Rack	1
11	01-10M990-00001	Burner – 2 Inlets (58 In.)	1
12	01-10M990-00002	Burner – 2 Inlets (76 In.)	1
13	01-10M990-00003	Burner – 2 Inlets (94 In.)	1
14	01-10M990-00004	Burner – 2 Inlets (112 In.)	1
15	01-10M678-00002	Support – Rear Burner	2
16	01-10M678-00001	Support – Forward Burner	2
17	01-1M1131-00002	Kit – Pilot Replacement (L.P. Gas)	1
18	01-1M1131-00001	Kit – Pilot Replacement (Nat. Gas)	1

OV851G ORIFICES (ALL QUANTITIES = 1)			
18 PAN		30 PAN	
PROPANE	NATURAL	PROPANE	NATURAL
01-10M930-01360 (0.1360 Dia.)	01-10M930-02187 (0.2187 Dia.)	01-10M930-01470 (0.1470 Dia.)	01-10M930-02380 (0.2380 Dia.)
01-10M930-01160 (0.1160 Dia.)	01-10M930-01850 (0.1850 Dia.)	01-10M930-01250 (0.1250 Dia.)	01-10M930-02031 (0.2031 Dia.)
24 PAN		36 PAN	
PROPANE	NATURAL	PROPANE	NATURAL
01-10M930-00007 (0.1460 Dia.)	01-10M930-02380 (0.2380 Dia.)	01-10M930-01770 (0.01770 Dia.)	01-10M930-00011 (0.2570 Dia.)
01-10M930-01200 (0.1200 Dia.)	01-10M930-02031 (0.2031 Dia.)	01-10M930-01495 (0.1495 Dia.)	01-10M930-02187 (0.2187 Dia.)



**BLOWER MOTOR AND DAMPER MOTOR
(OV850G)**

ILLUS.	PART NO.	NAME OF PART	AMT.
PL-56665			
1	01-1M1150-00026	Conduit – Flex	1
2	01-100V20-00005	Spring	1
3	01-1M1575-00001	Clip – Linkage Rod	2
4	01-1M1589-00001	Rod – Linkage	1
5	01-1000V1-00018	Clamp – Hose	2
6	01-1M1589-00002	Rod – Linkage	1
7	01-1M1048-00001	Linkage	1
8	01-1000V8-00033	Motor – Damper	1
9	01-1A1023-00012	Hose – Pressure Switch	1
10	01-1000V1-00018	Clamp – Hose	2
11	01-1000V6-00071	Switch – Air Pressure	1
12	01-1M1004-00032	Tube – Aluminum Pressure Switch	1
13	01-100V17-00026	Fitting – Compression	1
14	01-100V10-00034	Buzzer	2
15	01-10M845-00001	Mount – Blower Motor	1
16	01-1000V8-00037	Motor – Blower	1
17	01-1000V3-00075	Sheave 3.45 In. Dia. x 5/8 In. Bore	1