



# CATALOG OF REPLACEMENT PARTS



## SALAD DRYER

SDPE  
SDPS

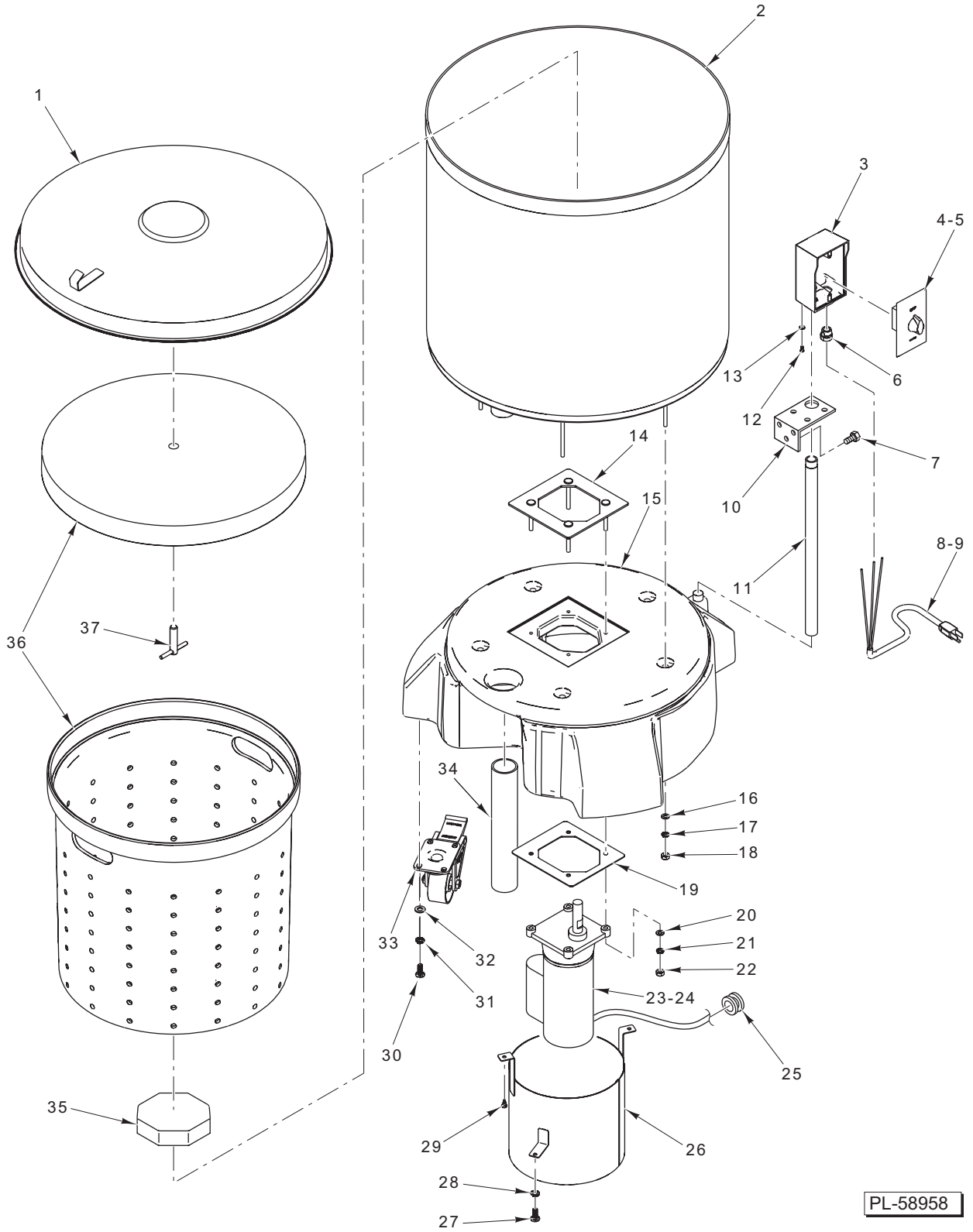
ML-139107  
ML-139108



**TABLE OF CONTENTS**

|   |                  |
|---|------------------|
| 5 | SDPE SALAD DRYER |
| 7 | SDPS SALAD DRYER |

SALAD DRYER REPLACEMENT PARTS



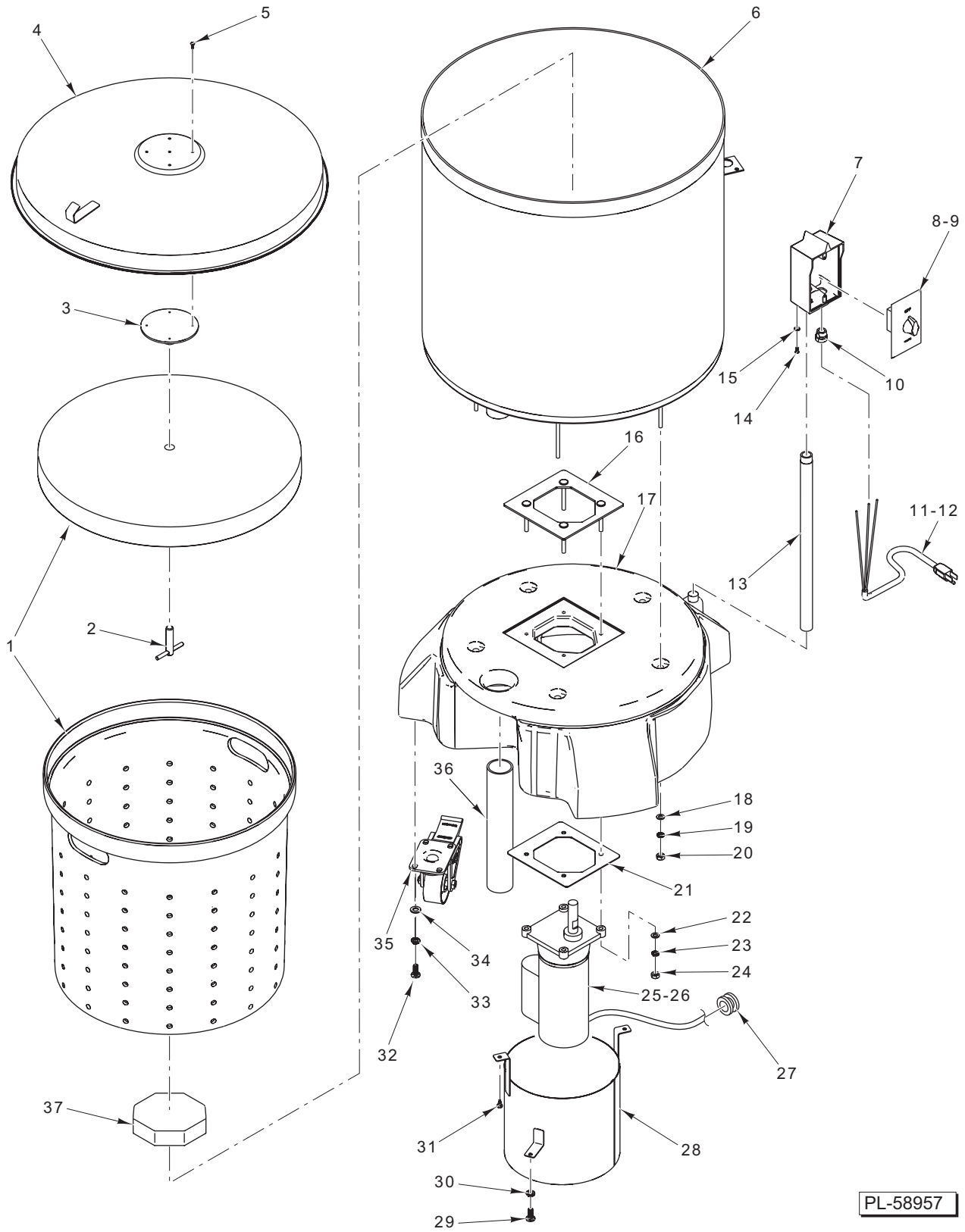
PL-58958

SDPE SALAD DRYER

**SDPE SALAD DRYER**

| ILLUS.<br>PL-58958 | PART NO.        | NAME OF PART                               | AMT. |
|--------------------|-----------------|--|------|
| 1                  | 01-505001-000PE | Lid – Outer Polyethylene (With Hook) ..... | 1    |
| 2                  | 01-505011-000PE | Tub – Polyethylene .....                   | 1    |
| 3                  | 01-505034-000PL | Box – Electrical Timer .....               | 1    |
| 4                  | 01-505037-000PE | Timer Intermatic (Incls. Knob).....        | 1    |
| 5                  | 01-505037-0000C | Cover – Timer .....                        | 1    |
| 6                  | 01-505036-000PE | Bushing – Cable Relief .....               | 1    |
| 7                  | 01-505034-0000A | Mach. Screw Phil. Pan Hd. ....             | 3    |
| 8                  | 01-505039-000PE | Cord – Power Supply (115 V.).....          | 1    |
| 9                  | 01-505039-00PEA | Cord – Power Supply (230 V.) .....         | 1    |
| 10                 | 01-505014-000PE | Bracket.....                               | 1    |
| 11                 | 01-505029-000PE | Pipe – Electrical Conduit.....             | 1    |
| 12                 | 01-505043-000PS | Mach. Screw 8-18 Hex Hd. ....              | 3    |
| 13                 | 01-505011-0000A | Washer.....                                | 3    |
| 14                 | 01-505017-000PE | Mount –Top Motor.....                      | 1    |
| 15                 | 01-915052       | Base – Polyethylene (Grey).....            | 1    |
| 16                 | 01-505044-000PS | Washer.....                                | 10   |
| 17                 | 01-505012-00001 | Lockwasher.....                            | 5    |
| 18                 | 01-505012-00002 | Nut .....                                  | 5    |
| 19                 | 01-505017-00BPE | Plate – Motor Mount Bottom.....            | 1    |
| 20                 | 01-505044-000PS | Washer.....                                | 8    |
| 21                 | 01-505012-00003 | Lockwasher.....                            | 4    |
| 22                 | 01-505012-00002 | Nut .....                                  | 4    |
| 23                 | 01-505026-000PE | Motor – Gear (115 V., 60 Hz., 1 Ph.).....  | 1    |
| 24                 | 01-505026-00PEA | Motor – Gear (230 V., 60 Hz., 1 Ph.) ..... | 1    |
| 25                 | 01-505028-000PE | Grommet – Rubber.....                      | 1    |
| 26                 | 01-505022-000PE | Splash Guard – Motor.....                  | 1    |
| 27                 | 01-505012-00004 | Mach. Screw Hex Hd. ....                   | 1    |
| 28                 | 01-505012-00003 | Washer.....                                | 1    |
| 29                 | 01-505034-0000A | Mach. Screw Phil. Pan Hd. ....             | 2    |
| 30                 | 01-505043-000PS | Mach. Screw 8-18 Hex Hd. ....              | 4    |
| 31                 | 01-505012-00003 | Lockwasher.....                            | 4    |
| 32                 | 01-505011-0000A | Washer.....                                | 8    |
| 33                 | 01-505042-000PE | Caster .....                               | 3    |
| 34                 | 01-505013-0000A | Drain – Pipe Extension Hose.....           | 1    |
| 35                 | 01-505027-000PE | Driver – Octagonal.....                    | 1    |
| 36                 | 01-505009-000PS | Basket – Dryer (Incls. Lid) .....          | 1    |
| 37                 | 01-505006-000PE | T-Handle Assy. ....                        | 1    |

**SALAD DRYER REPLACEMENT PARTS**



**SDPS SALAD DRYER**

PL-58957

**SDPS SALAD DRYER**

| ILLUS.<br>PL-58957 | PART NO.        | NAME OF PART  | AMT. |
|--------------------|-----------------|---|------|
| 1                  | 01-505009-000PS | Basket – Dryer (Incls. Lid) .....                                 | 1    |
| 2                  | 01-505006-000PE | T-Handle Assy. ....   | 1    |
| 3                  | 01-505005-000PS | Mount –Bearing .....  | 1    |
| 4                  | 01-505000-000PS | Lid – Complete Assy. (SST) (With Hook) (Incls. Items 3 & 5) ..... | 1    |
| 5                  | 01-505004       | Screw Slotted Pan Hd. ....  | 4    |
| 6                  | 01-505011-000PS | Shell – Drum (SST) .....  | 1    |
| 7                  | 01-505034-000PS | Timer Box – Electrical .....                                      | 1    |
| 8                  | 01-505037-000PE | Timer – Intermatic (Incls. Knob) .....                            | 1    |
| 9                  | 01-505037-0000C | Cover – Timer .....   | 1    |
| 10                 | 01-505036-000PE | Bushing – Cable Relief .....                                      | 1    |
| 11                 | 01-505039-000PE | Cord – Power Supply (115 V.) .....                                | 1    |
| 12                 | 01-505039-00PEA | Cord – Power Supply (230 V.) .....                                | 1    |
| 13                 | 01-505029-000PS | Conduit – Electrical Pipe .....                                   | 1    |
| 14                 | 01-505043-000PS | Mach. Screw 18-8 Hex Hd. ....                                     | 3    |
| 15                 | 01-505011-0000A | Washer .....  | 3    |
| 16                 | 01-505017-000PE | Mount – Top Motor .....   | 1    |
| 17                 | 01-915052       | Base – Polyethylene (Grey) .....                                  | 1    |
| 18                 | 01-505044-000PS | Washer .....  | 10   |
| 19                 | 01-505012-00001 | Lockwasher .....  | 5    |
| 20                 | 01-505012-00002 | Nut .....   | 5    |
| 21                 | 01-505017-00BPE | Plate – Motor Mount Bottom .....                                  | 1    |
| 22                 | 01-505044-000PS | Washer .....  | 8    |
| 23                 | 01-505012-00003 | Lockwasher .....  | 4    |
| 24                 | 01-505012-00002 | Nut .....   | 4    |
| 25                 | 01-505026-000PE | Motor – Gear (115 V., 60 Hz., 1 Ph.) .....                        | 1    |
| 26                 | 01-505026-00PEA | Motor – Gear (230 V., 60 Hz., 1 Ph.) .....                        | 1    |
| 27                 | 01-505028-000PE | Grommet – Rubber .....  | 1    |
| 28                 | 01-505022-000PE | Splash Guard – Motor .....  | 1    |
| 29                 | 01-505012-00004 | Mach. Screw Hex Hd. ....  | 1    |
| 30                 | 01-505012-00003 | Lockwasher .....  | 1    |
| 31                 | 01-505034-0000A | Mach. Screw Phil. Pan Hd. ....                                    | 2    |
| 32                 | 01-505043-000PS | Screw .....   | 4    |
| 33                 | 01-505012-00003 | Lockwasher .....  | 4    |
| 34                 | 01-505011-0000A | Washer .....  | 8    |
| 35                 | 01-505042-000PE | Caster .....  | 3    |
| 36                 | 01-505013-0000A | Drain – Pipe Extension Hose .....                                 | 1    |
| 37                 | 01-505027-000PE | Driver – Octagonal .....  | 1    |

