



**1048 SERIES
PIZZA OVEN
REPLACEMENT PARTS LIST**



EFFECTIVE DECEMBER 21, 2009

BLODGETT OVEN COMPANY, 44 Lakeside Avenue, Burlington, Vermont 05401 USA

Telephone: (802) 860-3700 (800) 331-5842 Fax: (802) 860-3732

www.blodgett.com

Superseding All Previous Parts Lists.

The Company reserves the right to make substitution in the event that items specified are not available.

ERRORS: Descriptive and/or typographic errors are subject to correction.

www.blodgett.com

IMPORTANT: When ordering parts, please provide the model, gas type and serial number of the oven. The identification plate is located on the left side of the combustion compartment and, also, above the control panel under the ledge.

- ☒ **ASAP Distributor Required Stocking Parts**
☒ **Doors Are Not Returnable**
 * **Item Is Too Large For UPS**

BURNER & PIPING ASSY. PARTS

Ref. No.	Part No.	Description
8	33294	Steel Tube Burners (Set of 2)
	4013	Air Shutter Only
	3001	Locknut for Air Shutter
	8717	Orifice, Main Burner (Set of 2) (Specify Model & Gas Type)
	34959	Manifold Assy. (w/flex hose)
	4872	Manifold Plug 1/8"
	34957	Flexible Hose w/fittings (for Manifold)
	3807	Union 1/2"
	1949	Nipple 1/2" x 1-3/16"
4	<input checked="" type="checkbox"/> 11529	Thermostat, FDH w/ Knob (300°- 650°)
	10392	Dial/Knob, FDH Thermostat
2	<input checked="" type="checkbox"/> 7854	Gas Valve w/ Handle
	<input checked="" type="checkbox"/> 7855	Handle, Gas Valve
1	<input checked="" type="checkbox"/> 11523	FMEA Automatic Safety Shut-Off Valve
3	<input checked="" type="checkbox"/> 11334	Pilot Burner for FMEA Valve, Natural
	<input checked="" type="checkbox"/> 11335	Pilot Burner for FMEA Valve, LP
	8922	Tubing, Pilot Burner
	1979	Nipple 1/2" x 1-1/2"
7	4589	Pressure Regulator, Natural
	10441	Pressure Regulator, LP
	<input checked="" type="checkbox"/> 5386	Orifice, Pilot, Natural (.018)
	<input checked="" type="checkbox"/> 5387	Orifice, Pilot, LP (.010)
	17649	Thru Pipe Assy.

BURNER COMPARTMENT COMPONENTS

Ref. No.	Part No.	Description
	4644	Deflector Assy. (3 Piece)
9	4643	Deflector, Side Panel (Each)
10	5593	Deflector, Center Panel

NOTE: Two piece deflectors are no longer available.

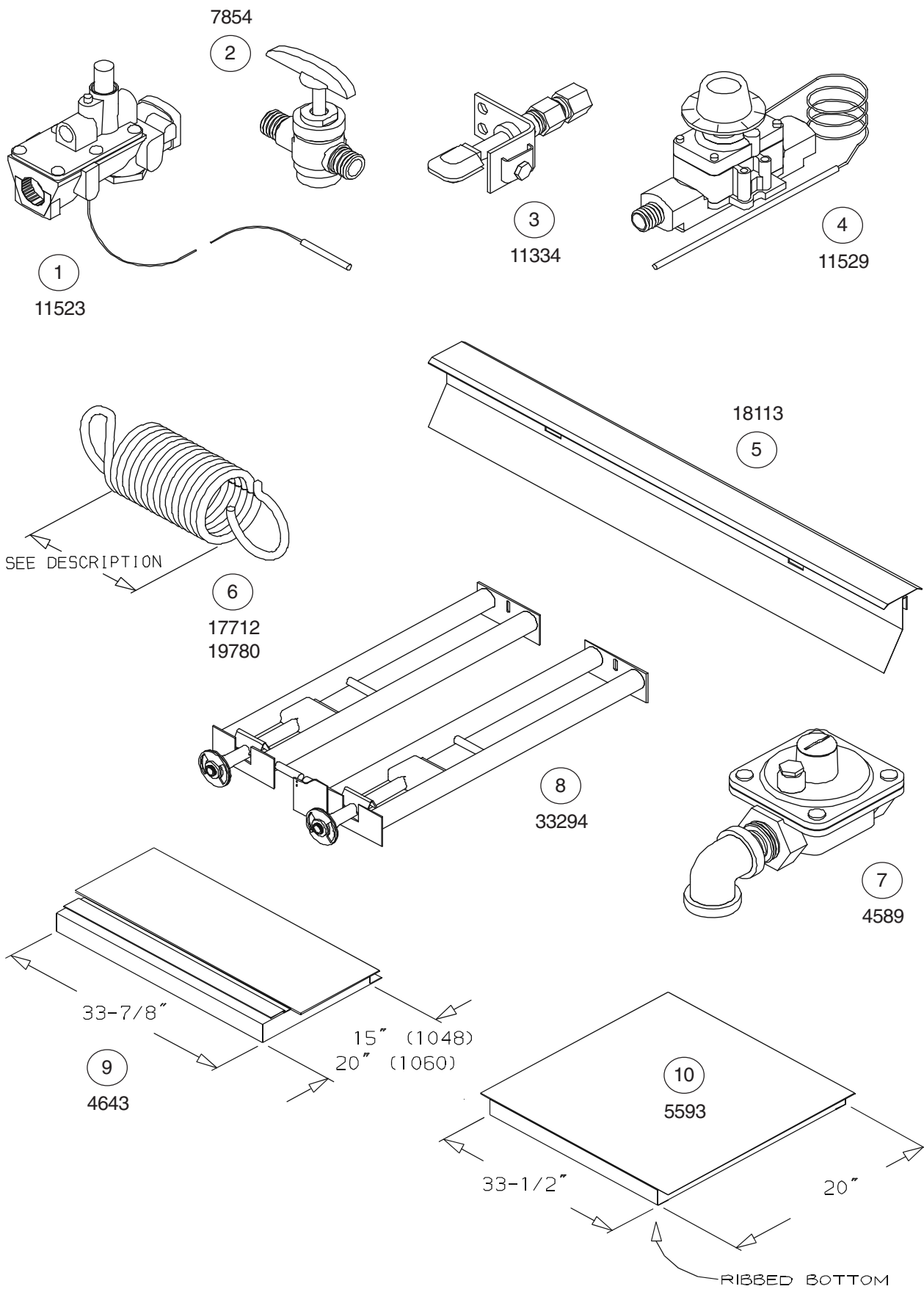
20726	Pilot Shield, S/S
20723	Air Duct Assy., RH
20724	Air Duct Assy., LH
20663	Manifold Shield Assy.
17649	Thru Pipe
20725	Burner Divider

BAKING COMPARTMENT COMPONENTS

Ref. No.	Part No.	Description
*	24664	Ultra Rokite Deck (2 Piece)
	23235	Flue Plate & Slide Assy. RH Adjustable
	23234	Flue Plate & Slide Assy. LH Adjustable
	8353	Steel Shelf (2 Piece)
	3655	Flue Plate, LH
	3656	Flue Plate, RH
5	18113	Baking Door Seal (Crumb Catcher)
	17964	Thermostat Bulb Guard (Before 10/28/09)
	53112	Thermostat Bulb Guard (After 10/28/09)

DOOR COMPONENTS

Ref. No.	Part No.	Description
◆	18658	Burner Door Assy. (Complete w/ Handle, Support Arms & Hinge Pin)
	8336	Handle, Burner Door, 12-5/8"
	8337	Support Arm, Burner Door
	7873	Hinge Pin, Burner Door
*◆	18659	Baking Door Assy. (Complete w/ Handle, Support Arms & Hinge Pin)
	18660	Handle, Baking Door, 29-3/8"
	8342	Support Arm, Baking Door, LH
	8343	Support Arm, Baking Door, RH
	21433	Hinge Pin, Baking Door, RH
	18383	Hinge Assy., Door Link
	3652	Door hinge w/pin, welded, for support arm.
	3817	Pin only on door, for 3652
	3840	Retainer Ring, Baking Door
	5878	Spirol Pin
	11694	Washers, Door (Flat) (Set of 10)
	17715	Washer, Curved Spring
	18661	Holder Assy. w/ Pins, Spring
6	<input checked="" type="checkbox"/> 17712	Spring, Main 8" (Larger)
6	<input checked="" type="checkbox"/> 19780	Spring, Helper 6-1/2" (Smaller)
	17623	Bearing, Cylindrical
	17624	Bearing, Flanged Door
	18092	Seal, Door Opening Top S/S "V Shape"



EXTERIOR COMPONENTS

Ref. No.	Part No.	Description
*	11669	Crown Assy. S/S (Trim at top of oven)
*	18417	Crown Frame Assy. (Dbl Oven) (Front Air Intake) (Before 4/89)
*	8346	Crown Angle Leg Frame S/S (Dbl Oven) (Bottom Air Intake) (After 4/89)
*	3861	Crown Angle Leg Frame, Powder Coated Black (Dbl Oven) (Bottom Air Intake) (After 4/89)
	8349	Flue Connector
	31689	Draft Diverter, Canopy Venting, S/S
	8348	Draft Hood, Direct Venting, S/S (10" Diameter)
	17830	Legs, 12" S/S w/ Bolts (Set of 4)
	17827	Legs, 12" Powder Coated Black w/ Bolts (Set of 4)
	18693	Legs, 19" S/S w/ Bolts (Set of 4)
	18692	Legs, 19" Powder Coated Black w/ Bolts (Set of 4)
	17831	Legs, 32" S/S w/ Bolts (Set of 4)
	17829	Legs, 32" Powder Coated Black w/ Bolts (Set of 4)
	30822	Legs w/ Casters, 7" Black w/ Bolts (Set of 4)
	31588	Legs w/ Casters, 12" Black w/ Bolts (Set of 4)
	30823	Legs w/ Casters, 19" Black w/ Bolts (Set of 4)
	30824	Legs w/ Casters, 27" Black w/ Bolts (Set of 4)
	17566	Bolts, Legs (Set of 12)
	37008	Access Panel, LH
	18112	Control Cover Panel, RH
	37007	Side Cover (to access springs)
	18662	Bottom Insulation Holder
	11255	Nameplate, Blodgett 12-3/4"
	20326	Lighting Instruction Plate
	7429	Louvered Box (bottom of oven)
	21826	Gas Connector Kit, 36"
	21242	Gas Connector Kit, 48"

**EXCLUSIVE TO EXPORT
(CE & NON CE)**

Ref. No.	Part No.	Description
	9635	Dial/Knob, Thermostat FDH (°C)350° CE & NON CE
	11529	Thermostat CE & NON CE
	R4435	Gas Valve, Manual CE
	R0364	Square "D" Knob (for gas valve) CE
	7854	Manual Gas Valve NON CE
	7855	Handle, Manual Gas Valve NON CE
	11523	Safety Valve NON CE
	34067	Safety Lighting Pilot Valve CE
	R0364	Knob, Square D (For CE Safety Valve) CE
	11334	Pilot Burner Nat NON CE
	11335	Pilot Burner LP NON CE
	34945	Pilot Burner Kit, Nat CE
	34946	Pilot Burner Kit, LP CE
	34926	Pilot Burner, Nat CE
	34927	Pilot Burner, LP CE
	34069	Valve Plate & Bracket Assy CE
	34071	Shaft & Cam Assy, Pilot Valve CE
	34072	Shaft, Pilot Valve CE
	8922	Pilot Tubing CE & NON CE
	34076	Thru Pipe Assy CE
	34073	Pin, Spring 1/8 x 5/8 CE
	34075	Spring Extension .12 Dia CE
	3835	Thermocouple, Pilot CE
	34078	Regulator Assy. NAT CE
	33956	Regulator Assy LP CE
	34077	Manifold Assy CE
	34082	Manifold Shield RH CE
	34083	Manifold Shield LH CE
	20663	Manifold Shield NON CE
	18419	Manifold Assy NON CE
	34061	Control Cover Assy CE
	34062	Control Decal CE
	34063	Front Cover LH CE
	34065	Cover Decal LH CE
	18112	Control Cover Assy NON CE
	37008	Panel, Access LH NON CE
	8336	Handle, Burner Door NON CE
	18660	Handle, Baking Door NON CE
	33958	Handle, Baking Door (Black Coated) CE
	34085	Handle, Burner Door (Black Coated) CE

BLODGETT OVEN COMPANY, 44 Lakeside Avenue, Burlington, Vermont 05401 USA

Telephone: (802) 860-3700 (800) 331-5842 Fax: (802) 860-3732

A Division of G.S. Blodgett Corporation